



**CITY OF MOBILE**  
**Oil/Water Separator Replacement - Municipal Garage**  
**City of Mobile Project No. 2022-3005-05**

**ADDENDUM #1**

**Addendum #1 items:**

- Questions and answers that were received during the pre-bid meeting, by telephone, and/or by electronic mail that were due by Thursday, July 28, 2022 at 12pm.
- Sign-in sheet from pre-bid meeting
- Revised Dwg. 4090-GA1 Rev. 1
- Revised Dwg. 4090-GA2 Rev. 1
- Revised Dwg. 4090-GA3 Rev. 1

**Instructions:** Please acknowledge receipt of this addendum by signing this form and including it in your submittal August 3, 2022.

**Acknowledgement:** I hereby acknowledge receipt of Addendum 1. I understand that failure to confirm the receipt of addenda may be cause for rejection of this submittal.

---

Company

---

Authorized Signature

---

Date

**CITY OF MOBILE**  
**Oil/Water Separator Replacement – Municipal Garage**  
**City of Mobile Project No. 2022-3005-05**

**QUESTIONS/ANSWERS:**

**QUESTION-1:** What is the engineering's estimated budget value for this project?

**ANSWER:** \$180,000

**QUESTION-2:** The existing pumps currently in service are rated for 120V, the plans call for 230V pumps. Can you verify the available electrical service for this project?

**ANSWER:** 230V electrical service, see the attached revised drawings for clarification.

**QUESTION-3:** Do the control panel enclosures and enclosure stands need to be stainless steel?

**ANSWER:** Yes. The control panel enclosures shall be NEMA 4X rated Stainless Steel

**QUESTION-4:** Is the contractor responsible for disposal of the existing Oil Water Separators (OWS-1 & OWS-2)

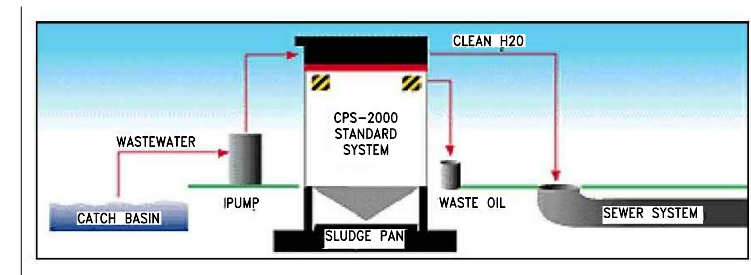
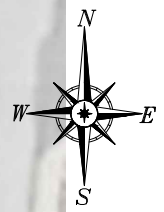
**ANSWER:** Yes. See DWG. 4090-GA1 Note 6

This concludes the submitted questions and answers.

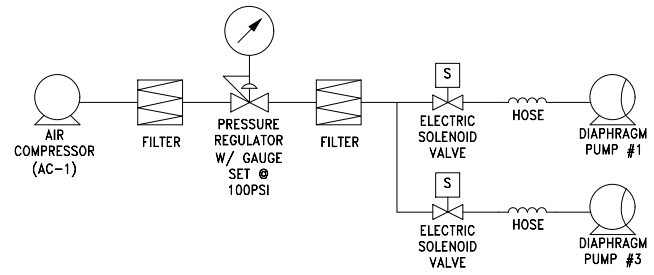


**Oil/Water Separator Replacement (Municipal Garage) Pre-Bid Meeting**  
**Project No. 2022-3005-05**  
**7/27/2022 10:00 am**

Name	Company	Email	Phone
Ryne Smith	COM	Ryne.Smith@Cityofmobile.org	251-208-7529
Roger Cruise	R J Baggott	roger@rjbaggett.com	251-463-7473
John Hill	R J Baggott	John@rjbaggett.com	251-635-6100
Leroy Fuller	Bagby + Russell	Leoy@BagRus.com	251-344-5987
Drew Windham	McElhenny Construction	drew@mcelhennyconst.com	228-217-7761
Marlin Pettway	COM	M.Pettway@cityofmobile.org	251-509-2708
Dwight Austin	City of Mobile	dwright.austin@cityofmobile.org	251-219-1739
Mike Hoffman	MHE	Mike@MilleHoffmans.com	251-666-2207
Jacob Bringle	MHE	Jacob@MilleHoffmans.com	251-666-8994
Miles Dearing	CMG-a	Miles@cmg-a.com	251-459-5422
PAUL CURTIS	JA WIRKULT	pculetta@jhwirult.com	229-239-3320
Khumuque Simpson	City of Mobile	ksimpson@cityofmobile.org	251-487-2666
PATRICK GARSTECKI	Cowles, Murphy, Grover	pgarstecki@cmg-a.com	251-327-6161
ROSEMARY GININ	CITY OF MOBILE	rosemary@cityofmobile.org	(251) 208-6072



TYP. EXISTING OIL/WATER SEPARATOR SCHEMATIC  
FOR INFORMATIONAL PURPOSES/REFERENCE ONLY



EXISTING COMPRESSED AIR P&ID  
FOR INFORMATIONAL PURPOSES/REFERENCE ONLY

EXISTING AIR COMPRESSOR MANUFACTURER INFORMATION				
AC-#	MANUFACTURER	FLOWRATE	PUMP MODEL #	SERIAL #
AC-1	QUINCY COMPRESSOR	35CFM @ 175PSI	QT-10	UTY710969

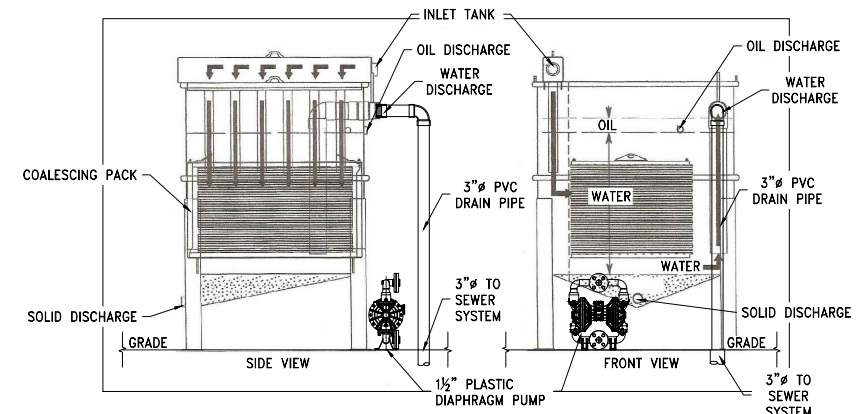
NOTES  
1. FOR INFORMATIONAL PURPOSES/REFERENCE ONLY

EXISTING OIL/WATER SEPARATOR MANUFACTURER INFORMATION				
OWS-#	MANUFACTURER	FLOWRATE (GPM)	MODEL #	SERIAL #
OWS-1	CRAWFORD ENVIRONMENTAL CPS 2000	1 TO 25	MODEL LV	ILLEGIBLE
OWS-2	CRAWFORD ENVIRONMENTAL CPS 2000	1 TO 25	MODEL LV	ILLEGIBLE

EXISTING PUMP INFORMATION									
PUMP-#	LOCATION	MANUFACTURER	FLOWRATE (GPM)	HEAD (FT)	MODEL #	OPERATION	HP/V/A	COMMENT	
1	BASIN #1	PLATING INTERNATIONAL, INC.	25	15	PI40 PP-PP/TF/TF/PP	AIR	N/A	SEE NOTE 1	
2	BASIN #1	LIBERTY PUMPS	65	15	LE41AV	ELECTRIC	0.4/120/12	SEE NOTE 2	
3	BASIN #2	PLATING INTERNATIONAL, INC.	25	15	PI40 PP-PP/TF/TF/PP	AIR	N/A	SEE NOTE 1	
4	BASIN #2	LIBERTY PUMPS	50	15	LSG202A	ELECTRIC	2.0/240/15	SEE NOTE 2	

GENERAL NOTES DEMOLITION

- CONTRACTOR SHALL DISCONNECT EXISTING 1 1/2" PLASTIC DIAPHRAGM PUMPS (PUMP #1 & #3) FROM EXISTING COMPRESSED AIR HOSE. DISCONNECT DIAPHRAGM PUMPS FROM OIL/WATER SEPARATOR (OWS-1 & OWS-2). CONTRACTOR TO REPLACE PUMPS #1 & #3 - SEE DWG. 4090-GA2. EXISTING DIAPHRAGM PUMPS (PUMP #1 & #3) TO BE RETAINED BY THE CITY OF MOBILE FOR FUTURE USE.
- CONTRACTOR SHALL DISCONNECT EXISTING 1 1/2" SUBMERSIBLE PUMPS (PUMP #2 & #4) FROM EXISTING OIL/WATER SEPARATOR (OWS-1 & OWS-2). CONTRACTOR TO REPLACE PUMP #2 & #4 - SEE DWG. 4090-GA2. EXISTING SUBMERSIBLE PUMPS (PUMP #2 & #4) TO BE RETAINED BY THE CITY OF MOBILE FOR FUTURE USE.
- CONTRACTOR SHALL DISCONNECT EXISTING OIL/WATER SEPARATOR (OWS-1 & OWS-2) FROM EXISTING 3" DRAIN PIPE. CONTRACTOR TO INSTALL NEW SCH. 40 PVC TYPE PIPING - SEE DWG. 4090-GA2 FOR DETAILS
- CONTRACTOR SHALL DISCONNECT, REMOVE AND DISPOSE OF ALL EXISTING FLEX PIPING AND ASSOCIATED FITTINGS FROM EXISTING OIL/WATER SEPARATOR (OWS-1 & OWS-2). CONTRACTOR TO INSTALL NEW FLEX PIPING AND ASSOCIATED FITTINGS - SEE DWG. 4090-GA2
- CONTRACTOR SHALL DISCONNECT, REMOVE AND DISPOSE OF ALL ELECTRICAL PANELS AND CONDUIT FROM EXISTING OIL/WATER SEPARATOR (OWS-1 & OWS-2). CONTRACTOR TO INSTALL NEW CONDUIT AND ELECTRICAL DISCONNECT - SEE DWG. 4090-GA2
- CONTRACTOR SHALL REMOVE AND DISPOSE OF EXISTING OIL/WATER SEPARATOR (OWS-1 & OWS-2) AT A PERMITTED DISPOSAL LANDFILL FACILITY, IF APPLICABLE.
- DEMOLITION PAY ITEM #1 INCLUDES ALL COST ASSOCIATED WITH DISCONNECTION OF ALL PUMPS, HOSES, PIPING, ETC. REQUIRED FOR REMOVING OF EXISTING OWS-1 AND OWS-2 AND ALL COST ASSOCIATED WITH DISPOSAL OF EXISTING OWS-1 & OWS-2.



TYP. EXISTING OIL/WATER SEPARATOR (OWS-1 & OWS-2)  
FOR INFORMATIONAL PURPOSES/REFERENCE ONLY

© COWLES, MURPHY, GLOVER & ASSOCIATES, INC. 2022  
CONFIDENTIAL, VALUABLE, AND PROPRIETARY INFORMATION

REV.	DESCRIPTION	DATE	BY	CHK'D
1	REVISED-ADDED ELECTRICAL NOTES	07/29/22	MAD	JJM
0	ISSUED FOR BID	06/27/22	MAD	JDG

**Cowles, Murphy, Glover & ASSOCIATES**  
A Full Service Engineering Firm

457 St. Michael St., Mobile, AL 36602  
13 Thrash Rd., LaGrange, GA 30241  
11880 Cranston Dr. Ste 102, Arlington, TN 38002  
Alabama (251) 433-1611  
Georgia (706) 302-2831 Tennessee (901) 290-5444

PROJECT

**CITY OF MOBILE MUNICIPAL GARAGE**

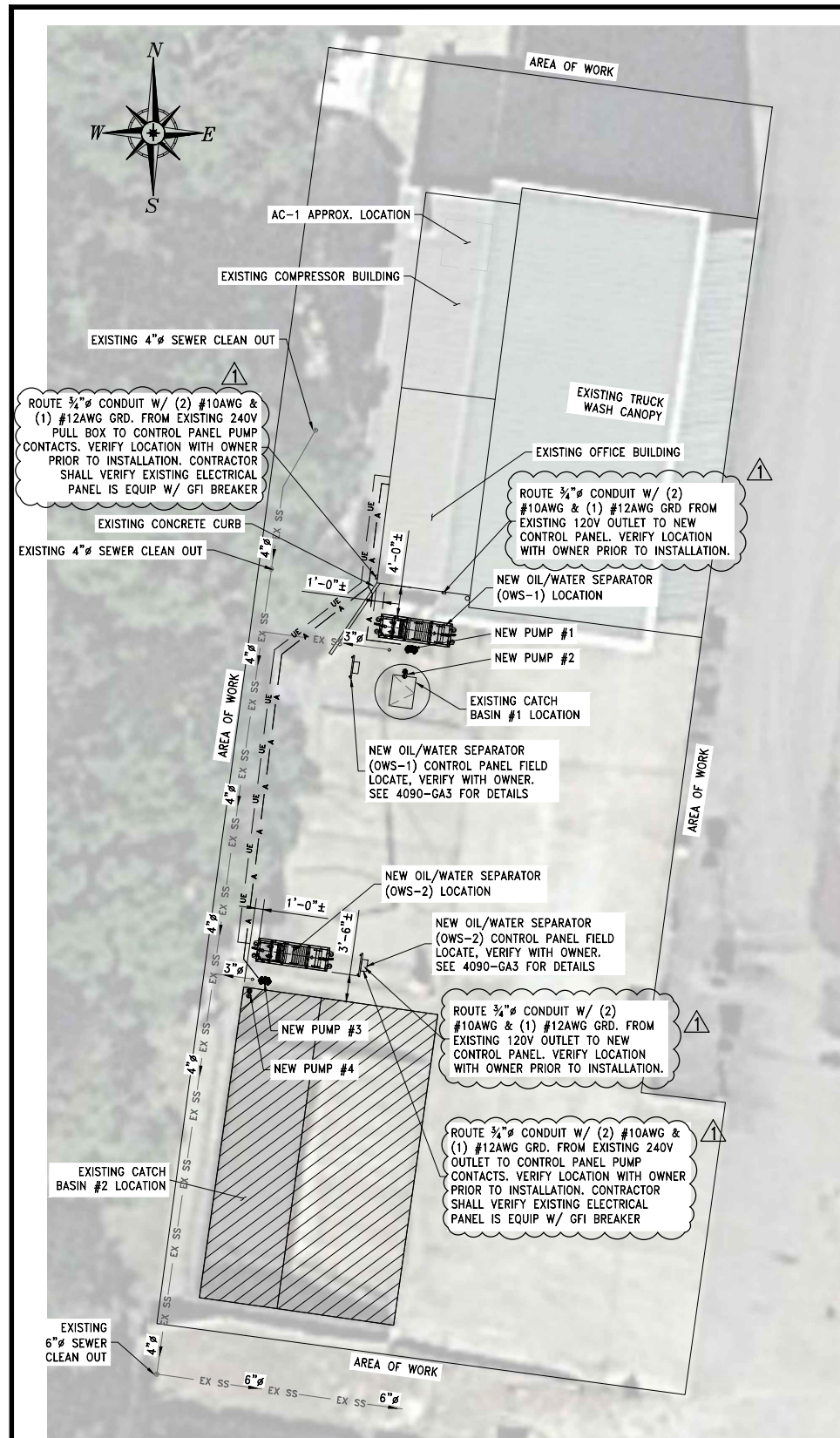
770 GAYLE STREET  
MOBILE, ALABAMA

TITLE

**EXISTING GENERAL ARRANGEMENT**

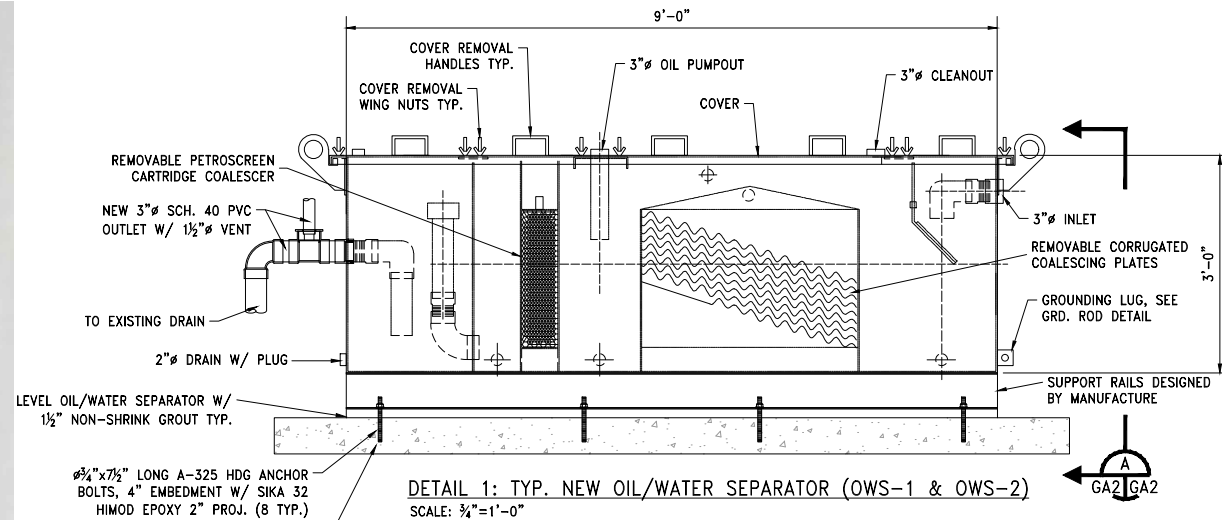
SCALE AS NOTED DRAWN BY MAD DATE 10/21/21 SHEET 22x34 REV. 1  
JOB NO. 4090-21 CHECKED BY JDG DATE 10/21/21 DRAWING NUMBER 4090-GA1

Z:\4000-4099\4090-CoM Public Works Oil Water Separator\Design\4090-GA1.dwg, 7/29/2022 10:35:16 AM, DWG To PDF.pc3, 1:2



**SITE MAP**  
N.T.S.

- EXISTING COMPRESSED AIR — A — A —
- EXISTING UNDER GROUND ELECTRIC — UE — UE —
- EXISTING ELECTRIC — E — E —
- EXISTING SEWER SYSTEM — EX SS — EX SS —



**DETAIL 1: TYP. NEW OIL/WATER SEPARATOR (OWS-1 & OWS-2)**  
SCALE: 3/4"=1'-0"

NEW OIL/WATER SEPARATOR MANUFACTURER INFORMATION				
OWS-#	MANUFACTURER	FLOWRATE (GPM)	MODEL #	INLET & OUTLET DIA.
OWS-1	HIGHLAND TANK	50 GPM	HTC 600	3"
OWS-2	HIGHLAND TANK	50 GPM	HTC 600	3"

PUMP INFORMATION								
PUMP-#	LOCATION	MANUFACTURER	FLOWRATE (GPM)	HEAD (FT)	MODEL #	OPERATION	HP/V/A	COMMENT
1	BASIN #1	VERSAMATIC OR APPROVED EQUAL	25	15	E40PP5T559A	AIR	N/A	NEW
2	BASIN #1	LIBERTY PUMPS OR APPROVED EQUAL	50	15	LSG202A	ELECTRIC	2.0/240/15	NEW
3	BASIN #2	VERSAMATIC OR APPROVED EQUAL	25	15	E40PP5T559A	AIR	N/A	NEW
4	BASIN #2	LIBERTY PUMPS OR APPROVED EQUAL	50	15	LSG202A	ELECTRIC	2.0/240/15	NEW

**GENERAL NOTES**

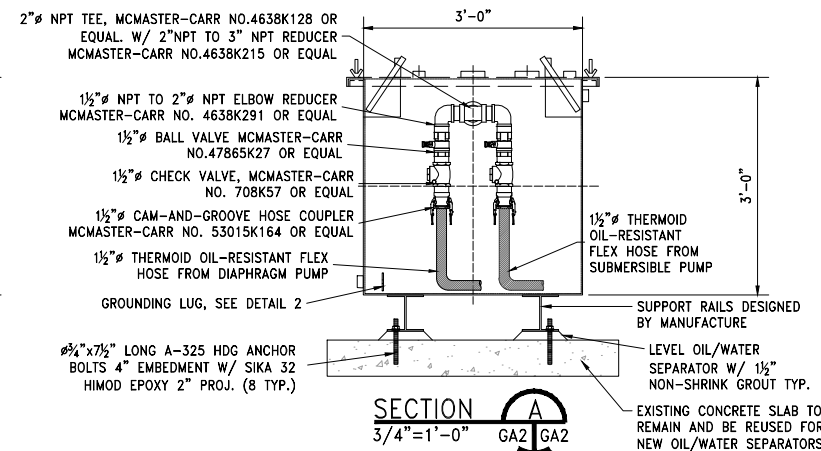
CONTRACTOR SHALL PROVIDE AND INSTALL NEW OIL/WATER SEPARATORS (OWS-1 & OWS-2). NEW OIL/WATER SEPARATORS (OWS-1 & OWS-2) SHALL BE PLACED AT THE SAME LOCATION AS THE EXISTING. BASIS OF DESIGN: HIGHLAND TANK HTC 600 ALTERNATE MANUFACTURERS: OIL WATER SEPARATOR TECHNOLOGIES AND MERCER INTERNATIONAL INC, OR APPROVED EQUAL

- CONTRACTOR SHALL LEVEL NEW OIL/WATER SEPARATORS (OWS-1 & OWS-2) WITH 1/2" MIN. NON-SHRINK GROUT. SEE SPECIFICATION SECTION 91000.01.
- CONTRACTOR SHALL INSTALL REQUIRED FITTINGS TO NEW OIL WATER SEPARATORS (OWS-1 & OWS-2) AS SHOWN.
- CONTRACTOR SHALL CONNECT NEW 1/2" PLASTIC DIAPHRAGM PUMP (PUMP #1) TO NEW OIL/WATER SEPARATOR (OWS-1). CONTRACTOR SHALL INSTALL NEW THERMOID OIL-RESISTANT FLEX HOSE BETWEEN THE DIAPHRAGM PUMP OUTLET AND OIL/WATER SEPARATOR.
- CONTRACTOR SHALL CONNECT NEW 1/2" SUBMERSIBLE PUMP (PUMP #2) TO OIL/WATER SEPARATOR (OWS-1). CONTRACTOR SHALL INSTALL NEW 1/2" FLEX HOSE BETWEEN THE SUBMERSIBLE PUMP OUTLET AND OIL/WATER SEPARATOR.
- CONTRACTOR SHALL CONNECT NEW 1/2" PLASTIC DIAPHRAGM PUMP (PUMP #3) TO NEW OIL/WATER SEPARATOR (OWS-2). CONTRACTOR SHALL INSTALL NEW 1/2" THERMOID OIL-RESISTANT FLEX HOSE BETWEEN THE DIAPHRAGM PUMP OUTLET AND OIL/WATER SEPARATOR.
- CONTRACTOR SHALL CONNECT NEW 1/2" SUBMERSIBLE PUMPS (PUMP #4) TO NEW OIL/WATER SEPARATOR (OWS-2). CONTRACTOR SHALL INSTALL NEW 1/2" FLEX HOSE BETWEEN THE SUBMERSIBLE PUMP OUTLET AND OIL/WATER SEPARATOR.
- CONTRACTOR SHALL CONNECT NEW OIL/WATER SEPARATOR (OWS-1 & OWS-2) TO EXISTING 3" DRAIN. ALL NEW DRAIN PIPING TO BE PVC SCHEDULE 40 - SEE DETAIL 1
- CONTRACTOR SHALL SUPPLY AND INSTALL REQUIRED CONDUIT, FITTINGS AND CONDUCTORS TO CONNECT NEW OIL/WATER SEPARATOR (OWS-1 & OWS-2) CONTROL PANELS TO EXISTING ELECTRICAL POWER FEED.
- OWS-1 & OWS-2 PAY ITEMS #2 & #3 INCLUDE ALL COST ASSOCIATED WITH PURCHASING NEW OIL/WATER SEPARATOR (OWS-1 & OWS-2).
- NEW PUMPS (#1, #2, #3, #4) PAY ITEM #4 INCLUDES ALL COST ASSOCIATED WITH PURCHASING NEW PUMPS (#1, #2, #3, #4) THAT CONTRACTOR SHALL INSTALL.
- PIPE/FITTINGS/HOSES/ETC. PAY ITEM #5 INCLUDES ALL COST ASSOCIATED WITH PURCHASING NEW DRAIN PIPE, FITTINGS, HOSES, COUPLINGS, AND VALVES ASSOCIATED WITH INSTALLATION OF NEW EQUIPMENT; AS REQUIRED TO HAVE NEW NEW OIL/WATER SEPARATORS (OWS-1 & OWS-2) FUNCTION AS DESIGNED.
- ELECTRICAL PAY ITEM #6 INCLUDES ALL COST ASSOCIATED WITH PURCHASING FITTINGS, CONDUIT, CONDUCTORS AND DISCONNECTS ASSOCIATED WITH INSTALLATION OF NEW EQUIPMENT. REFERENCE DWG. 4090-GA3
- INSTALLATION PAY ITEM #7 INCLUDES ALL COST ASSOCIATED WITH THE INSTALLATION OF NEW OIL/WATER SEPARATORS (OWS-1 & OWS-2), NEW PUMPS (#1, #2, #3, #4), ELECTRICAL, AND PIPE/FITTINGS/HOSES/ETC; AS REQUIRED TO HAVE NEW NEW OIL/WATER SEPARATORS (OWS-1 & OWS-2) FUNCTION AS DESIGNED.

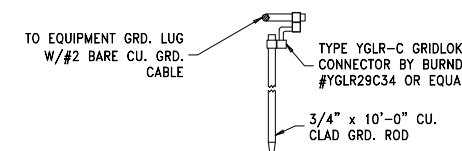
**OIL/WATER SEPARATOR (OWS-1 & OWS-2) MAINTENANCE SCHEDULE**

MONTHS	PROCEDURE		COMMENTS
	6	12	
X	X	INSPECT OIL/WATER SEPARATOR	IF SEDIMENT EXCEEDS A 12-INCH DEPTH OR IF AN OIL LAYER IS PRESENT A CLEANING MUST OCCUR
	X	CLEAN OIL/WATER SEPARATOR	DISPOSE CONTENTS OF THE CLEANING IN ACCORDANCE TO CITY OF MOBILE WASTE REGULATIONS
	X	CLEAN REMOVABLE COALESCING PLATES	DISPOSE CONTENTS OF THE CLEANING IN ACCORDANCE TO CITY OF MOBILE WASTE REGULATIONS
	X	CLEAN PETROSCREEN CARTRIDGE COALSCER	DISPOSE CONTENTS OF THE CLEANING IN ACCORDANCE TO CITY OF MOBILE WASTE REGULATIONS

\*FOR CITY OF MOBILE PUBLIC WORK INFORMATION ONLY



**SECTION A**  
3/4"=1'-0" GA2 GA2



**DETAIL 2: GRD. ROD CONNECTION**  
NTS

**OWS-1 & OWS-2 PUMP SYSTEM DESCRIPTION**

TWO PUMPS SHALL BE INCORPORATED INTO THE DESIGN OF EACH NEW OIL/WATER SEPARATOR (OWS-1 & OWS-2). PRIMARY PUMP (PUMP #1 OR #3) 25 GPM AIR DIAPHRAGM PUMP WITH A NC (NORMALLY CLOSED) SOLENOID VALVE, AND FLOAT SWITCH. SECONDARY PUMP (PUMP #2 OR #4) 50 GPM ELECTRIC GRINDER PUMP W/ AUTOMATIC FLOAT SWITCH.

**SEQUENCE OF OPERATION**

- PUMP #1 OR #3 SHALL OPERATE WITH AN H-O-A SWITCH LOCATED ON THE CONTROL PANEL.
  - OFF MODE - PUMP #1 OR #3 SHALL BE OFF (SOLENOID VALVE CLOSED)
  - HAND MODE - PUMP #1 OR #3 SHALL RUN UNTIL THE SWITCH IS PLACED INTO OFF OR AUTO.
  - AUTO MODE (NORMAL OPERATION LOCATION) - PUMP #1 OR #3 SHALL BE OFF (SOLENOID VALVE CLOSED) UNTIL THE FLOAT SWITCH LOCATED IN CATCH BASIN REACHES HIGH WATER POSITION.
    - HIGH WATER POSITION- SOLENOID VALVE SHALL OPEN AND ALLOW PUMP #1 OR #3 TO BEGIN OPERATING; PUMP #1 OR #3 SHALL OPERATE UNTIL FLOAT SWITCH RETURNS LOW WATER POSITION.
    - LOW WATER POSITION- SOLENOID VALVE SHALL RETURN TO THE CLOSED POSITION AND PUMP #1 OR #3 SHALL BE OFF.
- PUMP #2 OR #4 SHALL OPERATE WITH AN H-O SWITCH LOCATED ON THE CONTROL PANEL.
  - OFF MODE (NORMAL OPERATION LOCATION) - PUMP #2 OR #4 SHALL BE OFF
  - HAND MODE - PUMP #1 OR #3 SHALL BE OFF AND REMAIN OFF; PUMP #2 OR #4 SHALL BE OFF UNTIL THE AUTOMATIC FLOAT SWITCH LOCATED IN CATCH BASIN REACHES HIGH WATER POSITION.
    - HIGH WATER POSITION- PUMP #2 OR #4 TO BEGIN OPERATING, PUMP #2 OR #4 SHALL OPERATE UNTIL FLOAT SWITCH RETURNS TO LOW WATER POSITION.
    - LOW WATER POSITION- PUMP #2 OR #4 SHALL BE OFF AND H-O SWITCH SHALL BE PLACED IN THE OFF POSITION.
- OIL/WATER SEPARATOR (OWS) SHALL BE EQUIPPED WITH THREE (3) ALARMS.
  - HIGH WATER LEVEL
  - HIGH OIL LEVEL
  - HIGH-HIGH OIL LEVEL
  - HIGH WATER LEVEL- IF WATER LEVELS INSIDE OF OWS REACH HIGH WATER LEVELS ALL PUMPS (PUMP #1 OR #3 & PUMP #2 OR #4) SHALL BE OFF.
  - HIGH OIL LEVEL- IF OIL LEVELS INSIDE OF OWS REACH HIGH OIL LEVEL AN INDICATOR LIGHT LOCATED ON THE CONTROL PANEL SHALL ILLUMINATE AND BE FOLLOWED BY AN ALARM.
  - HIGH-HIGH OIL LEVEL- IF OIL LEVELS INSIDE OF OWS REACH HIGH-HIGH WATER LEVEL AN INDICATOR LIGHT LOCATED ON THE CONTROL PANEL SHALL ILLUMINATE AND ALL PUMPS (PUMP #1 OR #3 & PUMP #2 OR #4) SHALL BE OFF.

© COWLES, MURPHY, GLOVER & ASSOCIATES, INC. 2022  
CONFIDENTIAL, VALUABLE, AND PROPRIETARY INFORMATION

REV.	DESCRIPTION	DATE	BY	CHK'D
1	REVISED-ADDED ELECTRICAL NOTES	07/29/22	MAD	JJM
0	ISSUED FOR BID	06/27/22	MAD	JDG

**Cowles, Murphy, Glover & ASSOCIATES**  
A Full Service Engineering Firm

PERFORMANCE • RELIABILITY • EXPERIENCE

457 St. Michael St., Mobile, AL 36602  
13 Thrash Rd., LaGrange, GA 30241  
11880 Cranston Dr. Ste 102, Arlington, TN 38002  
Alabama (251) 433-1611  
Georgia (706) 302-2831 Tennessee (901) 290-5444

**CITY OF MOBILE MUNICIPAL GARAGE**  
770 GAYLE STREET  
MOBILE, ALABAMA

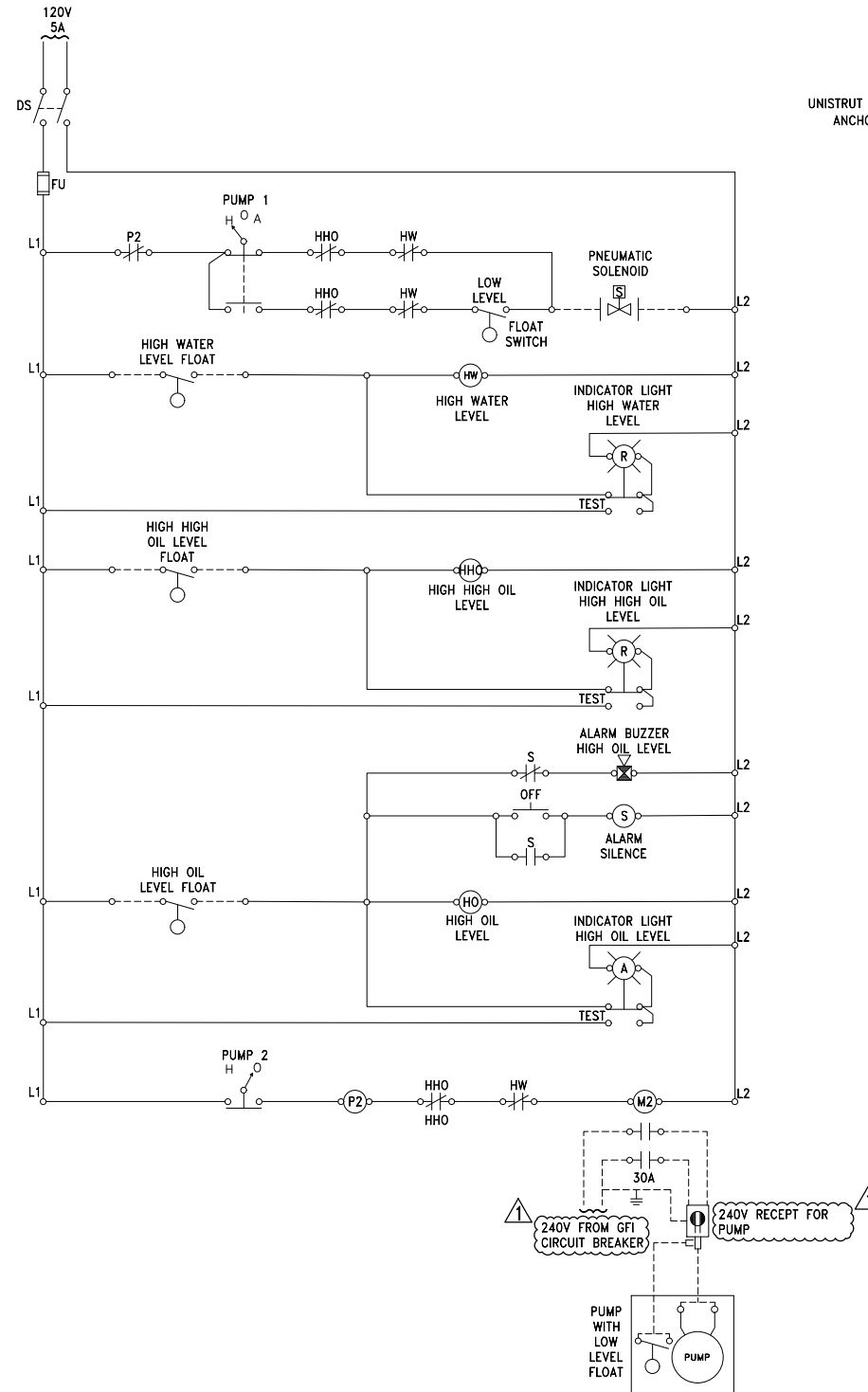
NEW GENERAL ARRANGEMENT				
SCALE	DRAWN BY	DATE	SHEET	22x34 REV.
AS NOTED	MAD	10/21/21	— of —	1
JOB NO.	CHECKED BY	DATE	DRAWING NUMBER	
4090-21	JDG	10/21/21	4090-GA2	

**OWS-1 & OWS-2 PUMP SYSTEM DESCRIPTION**

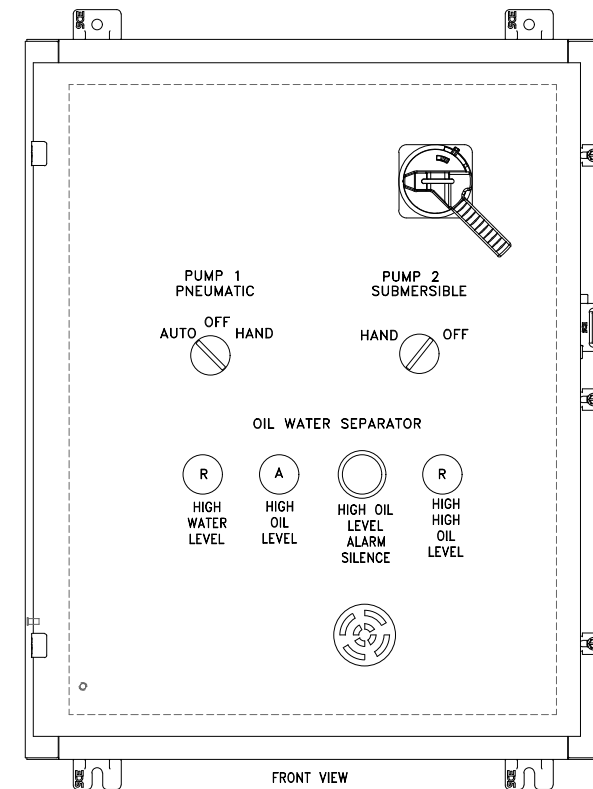
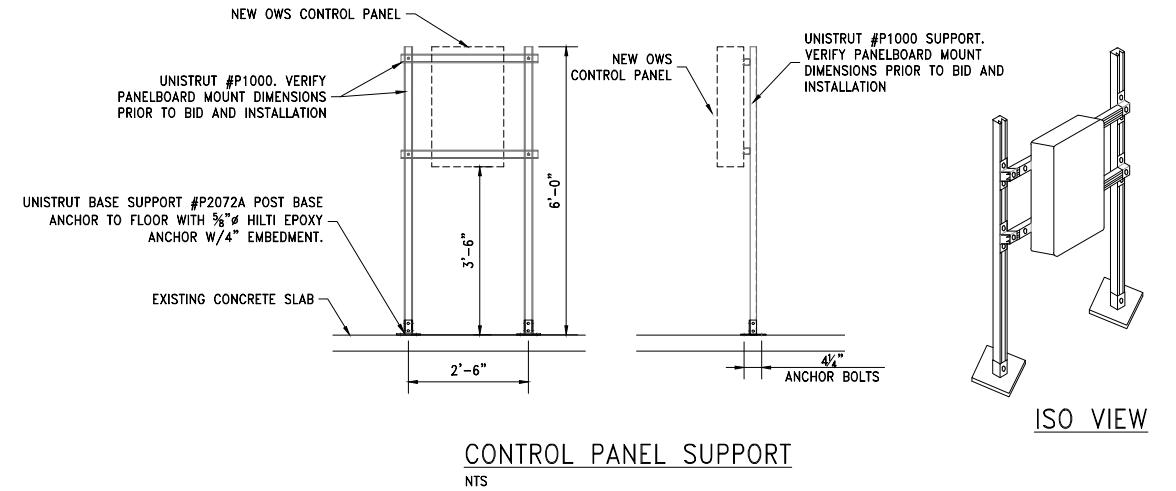
TWO PUMPS SHALL BE INCORPORATED INTO THE DESIGN OF EACH NEW OIL/WATER SEPARATOR (OWS-1 & OWS-2). PRIMARY PUMP (PUMP #1 OR #3) 25 GPM AIR DIAPHRAGM PUMP WITH A NC (NORMALLY CLOSED) SOLENOID VALVE, AND FLOAT SWITCH. SECONDARY PUMP (PUMP #2 OR #4) 50 GPM ELECTRIC GRINDER PUMP W/ AUTOMATIC FLOAT SWITCH.

**SEQUENCE OF OPERATION**

1. PUMP #1 OR #3 SHALL OPERATE WITH AN H-O-A SWITCH LOCATED ON THE CONTROL PANEL.
    - A. OFF MODE - PUMP #1 OR #3 SHALL BE OFF (SOLENOID VALVE CLOSED)
    - B. HAND MODE - PUMP #1 OR #3 SHALL RUN UNTIL THE SWITCH IS PLACED INTO OFF OR AUTO.
    - C. AUTO MODE (NORMAL OPERATION LOCATION) - PUMP #1 OR #3 SHALL BE OFF (SOLENOID VALVE CLOSED) UNTIL THE FLOAT SWITCH LOCATED IN CATCH BASIN REACHES HIGH WATER POSITION.
  - HIGH WATER POSITION- SOLENOID VALVE SHALL OPEN AND ALLOW PUMP #1 OR #3 TO BEGIN OPERATING; PUMP #1 OR #3 SHALL OPERATE UNTIL FLOAT SWITCH RETURNS LOW WATER POSITION.
  - LOW WATER POSITION- SOLENOID VALVE SHALL RETURN TO THE CLOSED POSITION AND PUMP #1 OR #3 SHALL BE OFF.
2. PUMP #2 OR #4 SHALL OPERATE WITH AN H-O SWITCH LOCATED ON THE CONTROL PANEL.
    - A. OFF MODE (NORMAL OPERATION LOCATION) - PUMP #2 OR #4 SHALL BE OFF
    - B. HAND MODE - PUMP #1 OR #3 SHALL BE OFF AND REMAIN OFF; PUMP #2 OR #4 SHALL BE OFF UNTIL THE AUTOMATIC FLOAT SWITCH LOCATED IN CATCH BASIN REACHES HIGH WATER POSITION.
    - HIGH WATER POSITION- PUMP #2 OR #4 TO BEGIN OPERATING, PUMP #2 OR #4 SHALL OPERATE UNTIL FLOAT SWITCH RETURNS TO LOW WATER POSITION.
    - LOW WATER POSITION- PUMP #2 OR #4 SHALL BE OFF AND H-O SWITCH SHALL BE PLACED IN THE OFF POSITION.
3. OIL/WATER SEPARATOR (OWS) SHALL BE EQUIPPED WITH THREE (3) ALARMS.
    - HIGH WATER LEVEL
    - HIGH OIL LEVEL
    - HIGH-HIGH OIL LEVEL
    - A. HIGH WATER LEVEL- IF WATER LEVELS INSIDE OF OWS REACH HIGH WATER LEVELS ALL PUMPS (PUMP #1 OR #3 & PUMP #2 OR #4) SHALL BE OFF.
    - B. HIGH OIL LEVEL- IF OIL LEVELS INSIDE OF OWS REACH HIGH OIL LEVEL AN INDICATOR LIGHT LOCATED ON THE CONTROL PANEL SHALL ILLUMINATE AND BE FOLLOWED BY AN ALARM.
    - C. HIGH-HIGH OIL LEVEL- IF OIL LEVELS INSIDE OF OWS REACH HIGH-HIGH WATER LEVEL AN INDICATOR LIGHT LOCATED ON THE CONTROL PANEL SHALL ILLUMINATE AND ALL PUMPS (PUMP #1 OR #3 & PUMP #2 OR #4) SHALL BE OFF.



**OIL/WATER SEPARATOR (OWS-1 & OWS-2) PUMP CONTROL DIAGRAM**  
NTS



**TYP. OIL/WATER SEPARATOR PUMP CONTROL LAYOUT**  
NTS, REFERENCE DWG. 4090-GA2 FOR LOCATION OF OWS-1 & OWS-2 CONTROL PANELS

REV.	DESCRIPTION	DATE	BY	CHK'D
1	REVISED-ADDED ELECTRICAL NOTES	07/29/22	MAD	JJM
0	ISSUED FOR BID	06/27/22	MAD	JDG

**Cowles, Murphy, Glover & ASSOCIATES**  
*A Full Service Engineering Firm*

457 St. Michael St., Mobile, AL 36602  
13 Thrash Rd., LaGrange, GA 30241  
11880 Cranston Dr. Ste 102, Arlington, TN 38002  
Alabama (251) 433-1611  
Georgia (706) 302-2831 Tennessee (901) 290-5444

PROJECT

**CITY OF MOBILE  
MUNICIPAL GARAGE**  
770 GAYLE STREET  
MOBILE, ALABAMA

TITLE

**OIL WATER PUMP CONTROL DIAGRAM**

SCALE	DRAWN BY	DATE	SHEET	REV.
AS NOTED	JJM	11/21/21	22x34	1
JOB NO.	CHECKED BY	DATE	DRAWING NUMBER	
4090-21	JDG	11/21/21	4090-GA3	