

CITY OF MOBILE

BID SHEET

This is Not an Order

Mailing Address:
 P. O. Box 1948
 Mobile, Alabama 36633
 (251) 208-7434

**Purchasing Department
 and Package Delivery:**
 Government Plaza
 4th Floor, Room S-408
 205 Government St
 Mobile, Alabama 36644

**READ TERMS AND CONDITIONS
 ON REVERSE SIDE OF THIS PAGE
 BEFORE BIDDING**

Typed by: _____ en Buyer: _____ 002

Please quote the lowest price at which you will furnish the articles listed below

DATE	BID NO.	DEPARTMENT	Commodities to be delivered F.O.B. Mobile to:
8/28/2020	5464	Garage	To Be Specified

This bid must be received and stamped by the Purchasing office not later than: 11:00 AM, Tuesday, September 15, 2020

QUANTITY	ARTICLES	UNIT	UNIT PRICE		EXTENSION	
			Dollars	Cents	Dollars	Cents
Appx 2-14	<p style="color: red; font-size: small;">Bid on this form ONLY. Make no changes on this form. Attach any additional information required to this form.</p> <p>WELDING REPAIRS AND UPGRADES TO 18 TO 20 CUBIC YARD DUMPING TRASH TRAILERS</p> <p>This bid will be for multiple trailers with different repairs.</p> <p>Pricing will be given two ways: 1) per trailer, 2) per specific and overall repairs.</p> <p>You will provide pricing for repair of each trailer, specific type or unit repairs.</p> <p>City will require that welding repairs take no more than five (5) business days per trailer.</p> <p>The desire is to return each trailer to service as quickly as possible.</p> <p>Price of repair and repair time will be considered in the award.</p> <p>Repairs to City of Mobile 18 to 20 cubic yard dumping trash trailers as per the following and attached.</p> <p>Vendor to make repairs as specified.</p> <p>Vendor will be replacing existing gate type door with barn door style end doors with latches and hinges.</p> <p>City will deliver the trailers within 25 miles of the City of Mobile Police jurisdiction and once completed, the City will pick up the trailers from vendor's location.</p> <p>Vendor will need to provide their plan to upgrade and repair the trailers in their response to the bid.</p> <p>City may make minor adjustments to the bid prior to work starting and may make adjustments after the first trailer is completed and inspected.</p>					
	Page 1 of 2		TOTAL			

**RETURN ONE SIGNED COPY OF THIS BID
 IN ENCLOSED ENVELOPE**

State delivery time within _____ days of receipt of P.O.

Firm Name _____

Typed Signature _____

By _____

We will allow a discount _____% 20 days from date of receipt of goods and correct invoice of completed order.

1. All quotations must be signed with the firm name and by an authorized officer or employee.
2. Verify your bid before submission as it cannot be withdrawn or corrected after being opened. In case of error in extension of prices, the unit price will govern.
3. If you do not bid, return this sheet and state reason. Otherwise, your name may be removed from our mailing list.
4. The right is reserved to reject any, or all quotations, or any portions thereof, and to waive technicalities if deemed to be in the interest of the City of Mobile.
5. This bid shall not be reassignable except by written approval of the Purchasing Agent of the City of Mobile.
6. State brand and model number of each item. All items bid must be new and latest model unless otherwise specified.
7. If bid results are desired, enclose a self-addressed and stamped envelope with your bid. (All or None bids only)
8. Do not include Federal Excise Tax as exemption certificate will be issued in lieu of same. The City is exempt from the Alabama and City sales taxes.
9. PRICES ARE TO BE FIRM AND F.O.B. DESTINATION UNLESS OTHERWISE REQUESTED.
10. BID WILL BE AWARDED ON ALL OR NONE BASIS UNLESS OTHERWISE STATED.
11. Bids received after specified time will be returned un-opened.
12. Failure to observe stated instructions and conditions will constitute grounds for rejection of your bid.
13. Furnish literature, specifications, drawings, photographs, etc., as applicable with the items bid.
14. Vendor May be required to obtain City of Mobile Business License as applicable to City of Mobile Municipal Code Section 34-50. For Business License inquiry contact the Revenue Department at (251) 208-7461 or cityofmobile.org/taxes.php.
15. If a bid bond is required in the published specifications, see below:
Each Bid Shall be Accompanied By A **Cashier's Check, Certified Check, Bank Draft Or Bid Bond** For the Sum Of Five (5) Percent Of The Amount Bid, Made Payable To The City Of Mobile And Certified By A Reputable Banking Institution. All Checks Shall Be Returned Promptly, Except The Check Of The Successful Bidder, Which Shall Be Returned After Fulfilling The Bid.
16. Contracts in excess of \$50,000 require that the successful bidder make every possible effort to have at least fifteen (15) percent of the total value of the contract performed by socially and economically disadvantaged individuals.
17. All bids/bid envelopes must have the bid number noted on the front. Bids that arrive unmarked and are opened in error shall be returned to vendor as an unacceptable bid.
18. If successful vendor's principal place of business is out-of-state, vendor may be required to have a Certificate of Authority to do business in the State of Alabama from the Alabama Secretary of State prior to issuance of a Purchase Order. Vendors are solely responsible for consulting with the Secretary of State to determine whether a Certificate is required. See www.sos.alabama.gov/BusinessServices/ForeignCorps.aspx. Please note that the time between application for and issuance of a Certificate of Authority may be several weeks.
19. Vendors do not need a City of Mobile Business License or Certificate of Authority from the Alabama Secretary of State to submit a bid, but will need to obtain the Business License and Certificate of Authority, if applicable, prior to issuance of a Purchase Order.

BID CONTINUATION SHEET

QUANTITY	ARTICLES	UNIT	UNIT PRICE		EXTENSION	
			Dollars	Cents	Dollars	Cents
	<p>Page 2 of 2</p> <p>City may inspect vendor's work as it is being done.</p> <p>Trailers may be viewed by contacting Jeff Deese at 251-208-4104 or 251-604-4707 or by email at Jeffery.deese@cityofmobile.org.</p> <p>Questions will not be answered at the viewing, but need to be sent to purchasing@cityofmobile.org and we will get your answers.</p> <p>The City desires that work on each trailer be completed within five (5) business days of delivery of the trailer to the vendor's site.</p> <p>No additional work without the written permission of the Purchasing Agent with the City of Mobile.</p> <p>All vendors will be required to provide verification of Enrollment in the E-Verify program. Additional information may be found at http://immigration.alabama.gov/.</p> <p>If the successful vendor's principal place of business is out-of-state, Vendor may be required to have a Certificate of Authority to do Business in the State of Alabama from the Secretary of State prior to issuance of a Purchase Order.</p> <p>Vendors are solely responsible for consulting with the Secretary of State to determine whether a Certificate is required. See: www.sos.alabama.gov/BusinessServices/ForeignCorps.aspx. Please note that the time between application for the issuance of a Certificate of Authority may be several weeks.</p> <p>Upon notification, vendor will have 10 business days to provide the Certificate of Authority and the E-Verify numbers to the Purchasing Department before award can be completed. (Vendors will possibly need to pay the expedite fee to meet this requirement because application is not sufficient. We must have a copy of the certificate with your Company ID number).</p> <p>Vendors do not need a City of Mobile Business License or Certificate of Authority from the Alabama Secretary of State, nor the E-Verify for certification to submit a bid, but will need to obtain the Business License and Certificate of Authority verification and/or provide the E-Verify Certification, if applicable, prior to the award of this bid.</p> <p>State of Alabama Local Vendor Preference Law 41-16-50 (a) and (d)</p> <p>Pricing firm for a one (1) year period following the award of this bid.</p> <p>TO BE AWARDED ALL OR NONE</p>					
			TOTAL			

RETURN ONE SIGNED COPY OF THIS QUOTATION IN ENCLOSED ENVELOPE

READ ABOVE INSTRUCTIONS BEFORE QUOTING

Firm Name _____
By _____

We will allow a discount _____ % 20 days from date of receipt of goods and correct invoice of completed order.

Pricing for Trailer Repairs by Asset Number as of Date of Bid Issue

#44161 \$ _____
#49922 \$ _____
#44260 \$ _____
#38765 \$ _____
#53359 \$ _____
#49925 \$ _____
#53358 \$ _____
#49924 \$ _____
#44159 \$ _____
#53361 \$ _____
#44468 \$ _____
#38767 \$ _____
#44174 \$ _____
#44469 \$ _____
#44172 \$ _____
#44169 \$ _____
#44499 \$ _____
#44175 \$ _____
#44767 \$ _____
#44176 \$ _____
#38106 \$ _____
#44887 \$ _____
#53360 \$ _____
#44467 \$ _____
#44461 \$ _____
#44751 \$ _____
#44500 \$ _____
#44173 \$ _____
#38771 \$ _____
#44170 \$ _____

TOTAL \$ _____

Time to complete each trailer
_____ days/trailer

Trailers to be repaired within 5 days or less of delivery to the vendor.

Prices for individual welding repairs based on "Specifications for Trash Trailer Repairs" if additional work is required or identified after bid is awarded. To be as per "Specifications for Trash Trailer Repairs."

Door Repair	\$ _____
Door Latch Assembly	\$ _____
Door Hinges	\$ _____
Front Basket Assembly	\$ _____
Repair Side Front of Trailer at Bottom	\$ _____
Repair Rear Upright at Upper Light Area	\$ _____
Move Light Hole Mounts	\$ _____
Side Angles Removed	\$ _____
Side Rope Tie Down Both Sides	\$ _____
Side Rope Tie Down One Side Only	\$ _____
Floor metal replacement cut weld grind	\$ _____/square foot
Front or side metal repair	\$ _____/square foot
Replace Floor of trailer per specifications	\$ _____/square foot
Angle repair price per square foot	\$ _____/square foot
Replace upper 2 feet of upright at rear light area	\$ _____ per side/corner
Price of rust removal	\$ _____/square foot
Repair top of trailer top channel	\$ _____ linear foot
Straighten hydraulic hose holder	\$ _____
Remove trailer stand—include grinding if needed	\$ _____
Adding hydraulic line holder	\$ _____ each

FAILURE TO PROVIDE INDIVIDUAL PRICING WILL CAUSE BID REJECTION.

Specifications for Trash Trailer Repairs

- Door repair;
 - Doors are to be heavy duty barn type doors,
 - 11 gauge steel sheet metal,
 - 4-inch structural channel,
 - Both doors must have 2 ¼" rings, welded to door on the inside upper corner of the bottom panel for the chain to latch,
 - Shore up door post on back of trailer with ½ inch structural steel plate at bottom cross channel and side upper channel post of trailer, see diagram attached,
- Door Latch assembly;
 - Positive latch,
 - 1-inch round steel bar on latch handle,
 - ½ structural steel flat bar,
 - Latch must lap over top of doors over to the inside of door,
 - Positive latch handle is at 3:00 o'clock,
 - 3 straps to contain latch bottom, middle and top on right door and on the left door,
- Door Hinges;
 - Made with ½ inch structural steel,
 - Minimum of 1 ¼ inch pins,
 - Straps to be no less than ½ x 3 inch flat bar with grease point,
 - Hinge must allow door to open to the side of trailer,
 - Must put 6 hinges per trailer, 3 on each side,
- Front Basket assembly;
 - Basket frame made with 1 ½ inch steel angle,
 - Diamond shape steel mesh,
 - Mount top of basket 20 inches below top of trailer,
 - Basket size width of trailer, 14" deep, 14" height,
- Repair side/front of trailer at bottom outside;
 - Remove needed rust, remove rusted metal area
 - Replace with 2 x ? sheet or angle, minimum of 6 inches,

- Continuous weld all the way around angle or sheet metal,
 - Repair both sides and front on needed trailers,
 - Side stakes shore up with flat bar on all stakes,
 - Completely add new metal all the way around trailer,
- Repair rear upright at light area;
 - Replace rear upright at top of post. Repair where damaged at light mount,
 - City to provide size of light hole repair
- Move light hole mounts;
 - Move light hole mount below top hinge,
 - Weld plate over light hole,
 - City will provide size of light hole repair
- Side angle remove;
 - Remove side angle (3 X 3) repair holes and grind smooth,
- Side rope tie down;
 - Remove round or flat side bar;
 - Replace with $\frac{5}{8}$ inch round steel bar,
- Floor metal replacement repair
 - To repair hole in floor of trailer
 - Cover with new metal over damaged area,
 - Weld bead around all edges sides of patch,
 - Grind weld smooth
- Repair top of trailer
 - Repair or remove and replace top channel of trailer only where torn NOT bent
- Straighten hydraulic hose holder
 - Straighten hydraulic hose holder on front of trailer
- Remove trailer stand
 - Remove trailer stand in front of trailer repair and grind if needed
- Add hydraulic line holder
 - Fabricate hydraulic line holder on front of trailer with flat bar

Trailer Repair by Asset No.

#44161

- Replace both rear doors
- Replace rear door hinges
- Replace rear door latch assembly
- Repair/replace side and front at bottom outside
- Remove and replace side tie down bars
- Repair top channel on trailer
- Remove front stand
- Straighten hydraulic hose holder

#49922

- Replace rear doors
- Replace rear door hinges
- Replace rear door latch assembly
- Replace front basket
- Remove front stand and repair
- Remove and replace side tie down bars
- Lower strobes lights
- Repair light holes at top
- Repair top channel of trailer
- Straighten hydraulic hose holder

#44260

- Replace rear doors
- Replace rear door hinges
- Replace rear door latch assembly
- Replace front basket.
- Repair/replace side and front at bottom outside
- Remove and replace side tie down bars
- Remove front stand and repair
- Straighten hydraulic line holder

#38765

- Replace rear doors
- Replace rear door latch assembly
- Replace rear door hinges
- Repair/replace side and front at bottom outside
- Remove front stand and repair
- Remove and replace side tie down bars
- Repair rear up right at light area

#53359

- Replace front basket
- Replace rear door latch assembly
- Put rings 2 ¼ inch rings on each door
- Remove side channels and repair
- Remove and replace side tie down bars
- Straighten hydraulic hose holder

#49925

- Replace rear door latch assembly
- Remove front stand
- Replace front basket
- Straighten hydraulic hose holder
- Lower strobe lights
- Repair strobe light holes
- Remove and replace side tie down bars

#53358

- Remove side angle
- Replace front basket
- Replace both rear doors
- Rear place rear door hinges
- Replace rear door latch
- Remove and replace side tie down bars

#49924

- Replace front basket.
- Replace both rear doors
- Replace door hinges
- Replace rear door latch assembly
- Lower strobe lights
- Repair light holes
- Straighten hydraulic hose holder
- Remove front stand
- Repair channel at top of trailer
- Remove and replace side tie down bars

#44159

- Replace rear doors
- Replace rear door latch assembly
- Replace rear door hinges
- Replace round bar on both sides of trailer
- Repair/replace metal on bottom outside of trailer both sides and front
- Repair top channel of trailer
- Straighten hydraulic hose holder
- Remove front stand

#53361

- Replace basket.
- Remove angle on both sides.
- Replace both rear doors
- Replace door hinges
- Replace rear door latch assembly
- Remove and replace side tie down bars
- Remove front stand
- Repair top channel

#44468

- Replace front basket.
- Repair/replace metal at bottom outside on both sides and front.
- Replace rear doors
- Replace rear door hinges
- Replace rear door latch
- Remove front stand
- Repair top channel
- Remove and replace side tie down bars

#38767

- Replace rear doors
- Replace rear door hinges
- Replace rear door latch assembly
- Replace front basket.
- Repair/replace metal on bottom outside both sides and front
- Remove replace side tie down bars
- Straighten hydraulic hose holder

#44174

- Replace front basket
- Repair/replace metal at bottom outside of trailer both sides and front
- Replace rear doors
- Replace rear door hinges
- Replace rear door latch assembly
- Repair top channel straighten hydraulic hose holder
- Remove front stand
- Remove and replace side tie down bars
- Repair top channel on trailer

#44469

- Repair/replace metal at bottom outside of trailer both sides front
- Replace front basket.
- Remove front stand
- Remove replace side tie down bars

#44172

- Replace rear doors
- Replace rear door hinges
- Replace rear door latch assembly
- Lower strobe light
- Repair light holes
- Replace front basket
- Remove and replace side tie down bars
- Repair 3 side uprights with 4" channel
- Repair top channel
- Remove front stand

#44169

- Repair/replace metal at bottom outside of trailer both sides and front
- Replace front basket
- Remove front stand repair light holes
- Repair front and side of trailer at the bottom
- Replace both rear doors
- Replace door latch assembly
- Replace door hinges
- Remove and replace side tie down bars
- Add hydraulic line holder on front

#44499

- Replace metal on bottom outside of trailer both sides and front
- Replace rear door latch assembly
- Replace both rear doors
- Replace door hinges
- Repair top channel of trailer
- Remove and replace side tie down bars
- Repair side/front of trailer at the bottom outside
- Replace front basket
- Remove front side stand

#44175

- Replace front basket
- Replace round bar on both sides of trailer
- Repair both sides and front at bottom outside of trailer
- Replace both rear doors,
- Replace door latch assembly
- Replace door hinges
- Remove front stand
- Repair top channel on trailer

#44767

- Replace front basket
- Remove front stand
- Repair 4 up rights channels
- Repair top of trailer channel
- Replace both rear doors
- Replace door latch assembly
- Replace door hinges
- Replace side tie down bars

#44176

- Remove front stand
- Straighten hydraulic hose holder
- Replace front basket
- Remove and replace side tie down bars
- Repair 6 up rights
- Repair top trailer channel
- Replace both rear doors
- Replace rear door latch assembly
- Replace door hinges

#38106 (Cardboard Trailer @ Gayle St.)

- Replace front basket
- Remove and replace side tie down bars
- Remove side ladder

#44887

- Remove and replace side tie down bars
- Remove front stand
- Straighten hydraulic hose holder
- Replace front basket
- Replace metal on bottom outside of trailer both sides and front
- Repair top channel
- Replace both rear doors
- Replace rear door latch assembly
- Replace door hinges

#53360

- Replace front basket
- Replace both rear doors
- Replace door latch assembly
- Replace door hinges
- Remove front stand
- Straighten hydraulic hose holder
- Remove and repair 3 inch channel on side
- Remove and replace side tie down bars

#44467 (Horse Barn)

- Remove front stand
- Straighten hydraulic hose holder
- Remove and replace side tie down bars
- Repair top channel on trailer
- Replace front basket
- Replace both rear doors
- Replace door latch assembly
- Replace door hinges
- Replace metal on bottom outside of trailer both sides and front

#44461

- Straighten hydraulic hose holder
- Remove front stand
- Replace front basket
- Repair top channel of trailer
- Replace metal on bottom outside of trailer both sides and front
- Replace both rear doors
- Replace door latch assembly
- Replace door hinges
- Remove and replace side tie down bars

#44751

- Replace front basket
- Replace metal on bottom outside of trailer both sides and front
- Replace both rear doors
- Replace door latch assembly
- Replace door hinges
- Straighten hydraulic hose holder
- Remove front stand
- Repair top channel on trailer
- Remove and replace side tie down bars

#44500 (Electrical Shop)

- Straighten hydraulic hose holder
- Remove front stand
- Replace metal on bottom outside of trailer both sides and front
- Remove and replace side tie down bars
- Replace both rear doors
- Replace door latch assembly
- Replace door hinges
- Replace front basket
- Repair top channel of trailer

#44173 (Gayle St. Tire Shop)

- Repair channel on top of trailer
- Replace metal on bottom outside of trailer both sides and front
- Remove and replace side tie down bars
- Replace both rear doors
- Replace door latch assembly
- Replace door hinges
- Straighten hydraulic hose holder
- Remove front stand
- Lower strobe lights
- Rear light holes
- Remove rings on side

#38771

- Remove and replace side tie down bars
- Replace front basket
- Replace rear door latch assembly
- Lower strobe lights
- Repair light holes
- Remove and replace side tie down bars

#44170

- Replace front basket
- Straighten hydraulic hose holder
- Remove front stand
- Replace metal on bottom outside of trailer both sides and front
- Replace both rear doors
- Replace door latch assembly
- Replace door hinges
- Remove and replace side tie down bars
- Repair channel on top of trailer
- Repair light holes



Sent from my iPhone

Left Front.



FRONT with Tarp Basket



Sent from my iPhone

Right Side



Right Side Showing Hinge Repairs
Right Side Repair and Channel/Beam Reinforcement



Sent from my iPhone

Right Side Tarp Ties Replaced
AND Channel/Beam Repairs

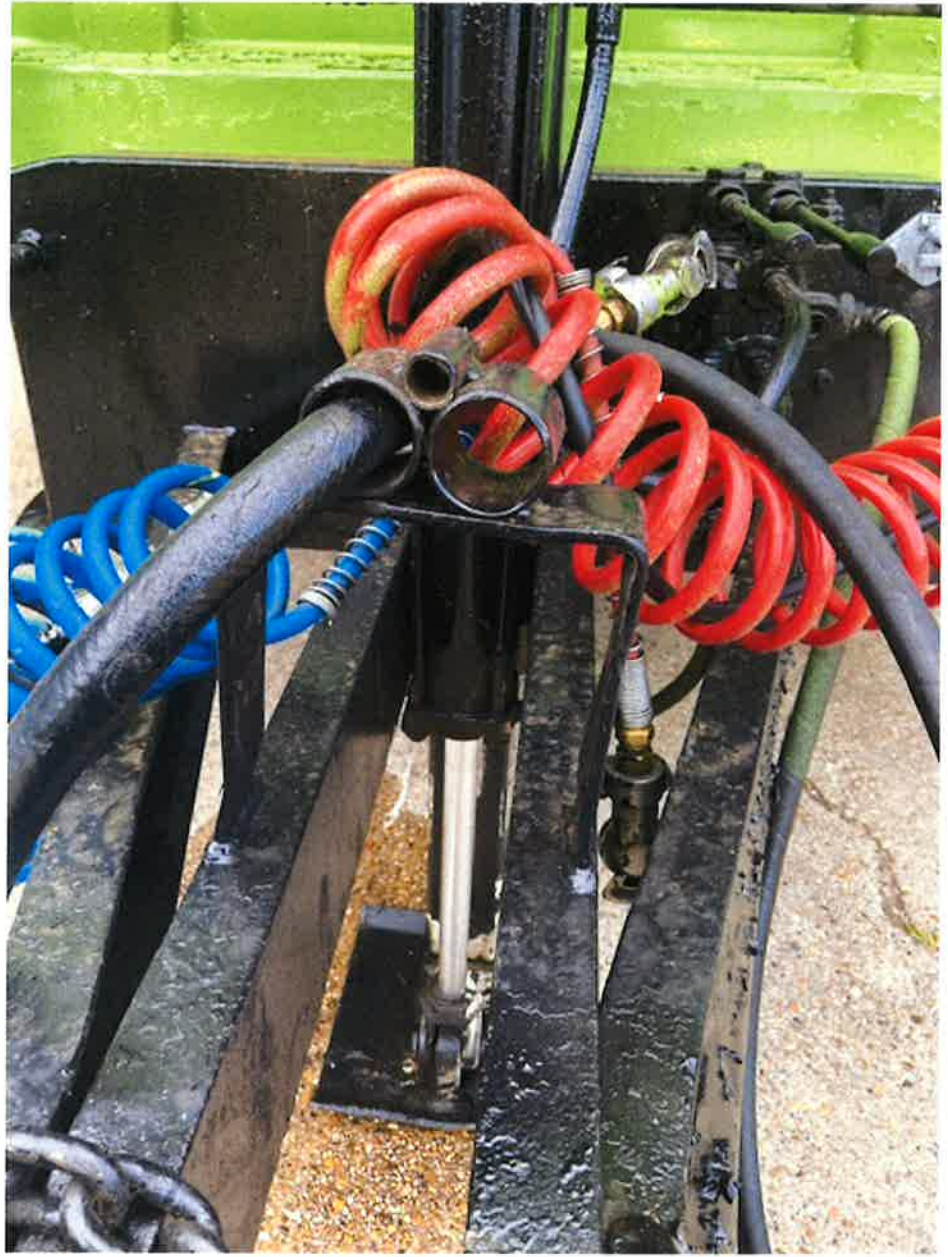
Sent from my iPhone



REAR



Front Basket Replaced and
Bottom Repair, CORNER REINFORCEMENT.



Hose Holder

Sent from my iPhone

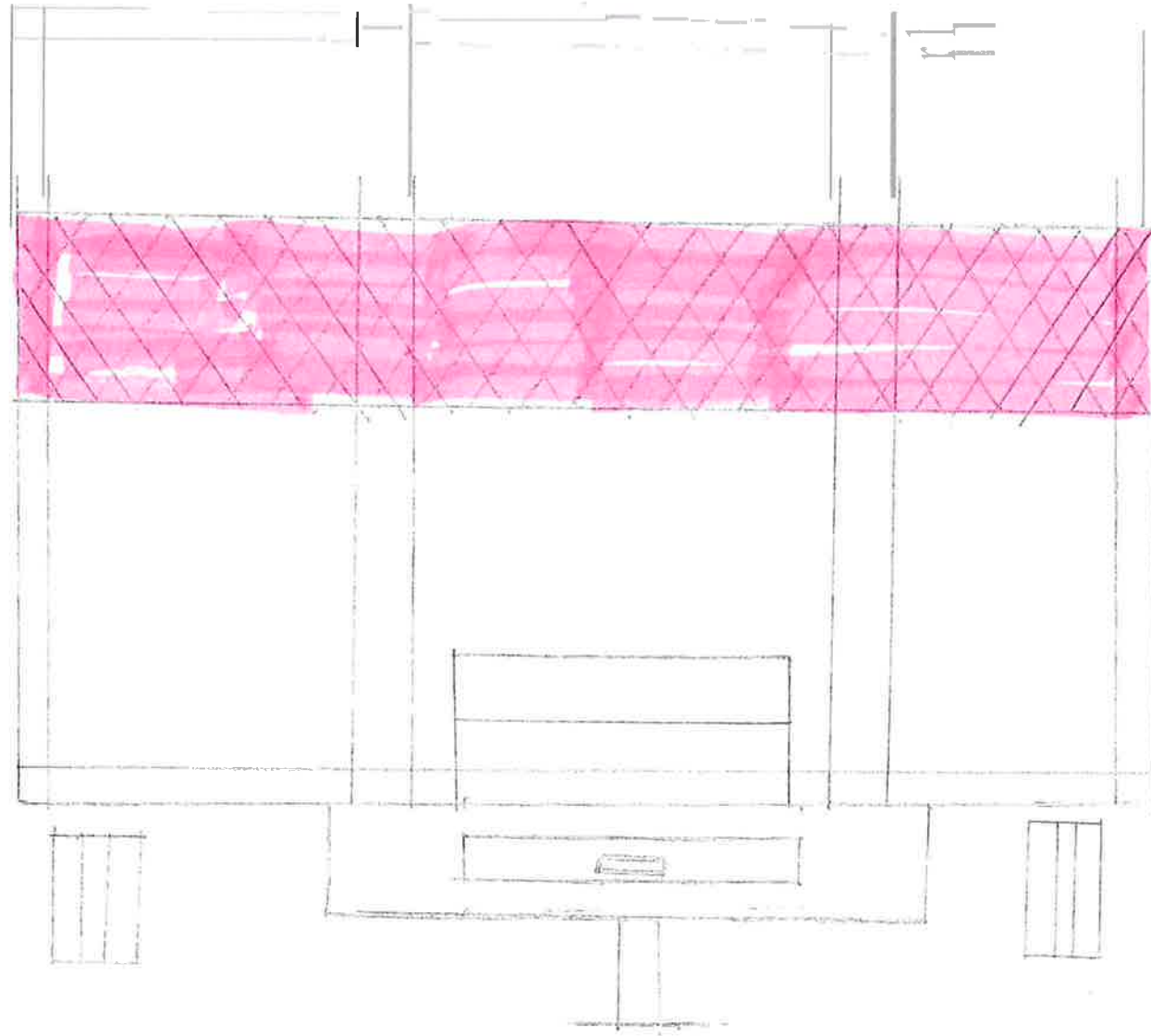


FRONT UNDER BASKET

NOV 7

44923

FRONT FLOOR PLAN



Pink

Replace tarp
basket see
Spec Sheet

W t- tt
WJ OII

Front Trash Trailer

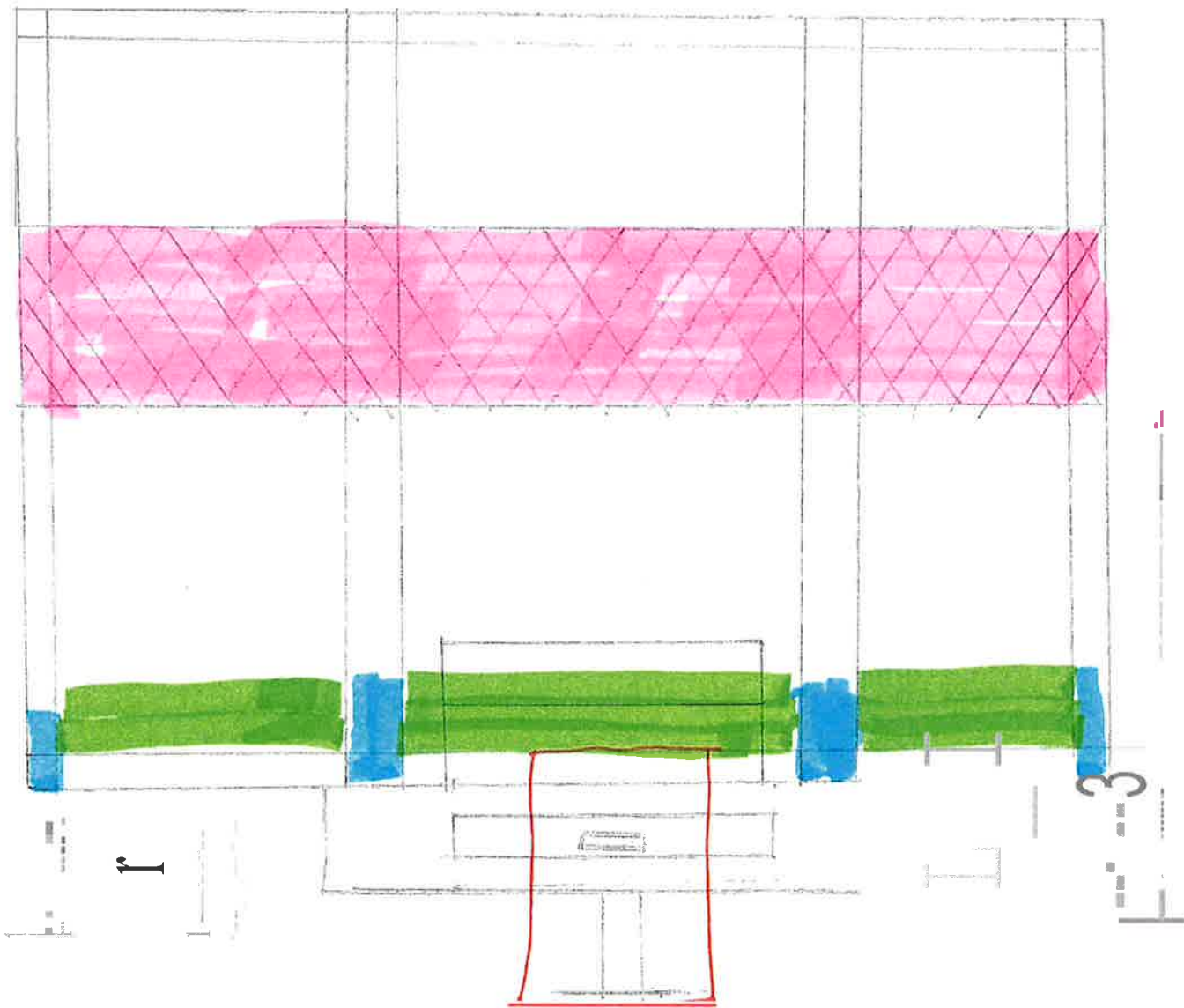


2 + I



R VA V
Q 0
9 1

a
r



Pink

Replace tarp
basket see spec
Sheet

1 Red

Repair $\Delta 0 + 1000$
Valve 10



Left Front GRADER showing
Repairs/Reinforcement



UPRIGHT CHANNEL / BEAM REPAIR



Side Repair ANCP CHANNEL/Beam
REINFORCEMENT



Side Repair, Channel / Beam
Reinforcement

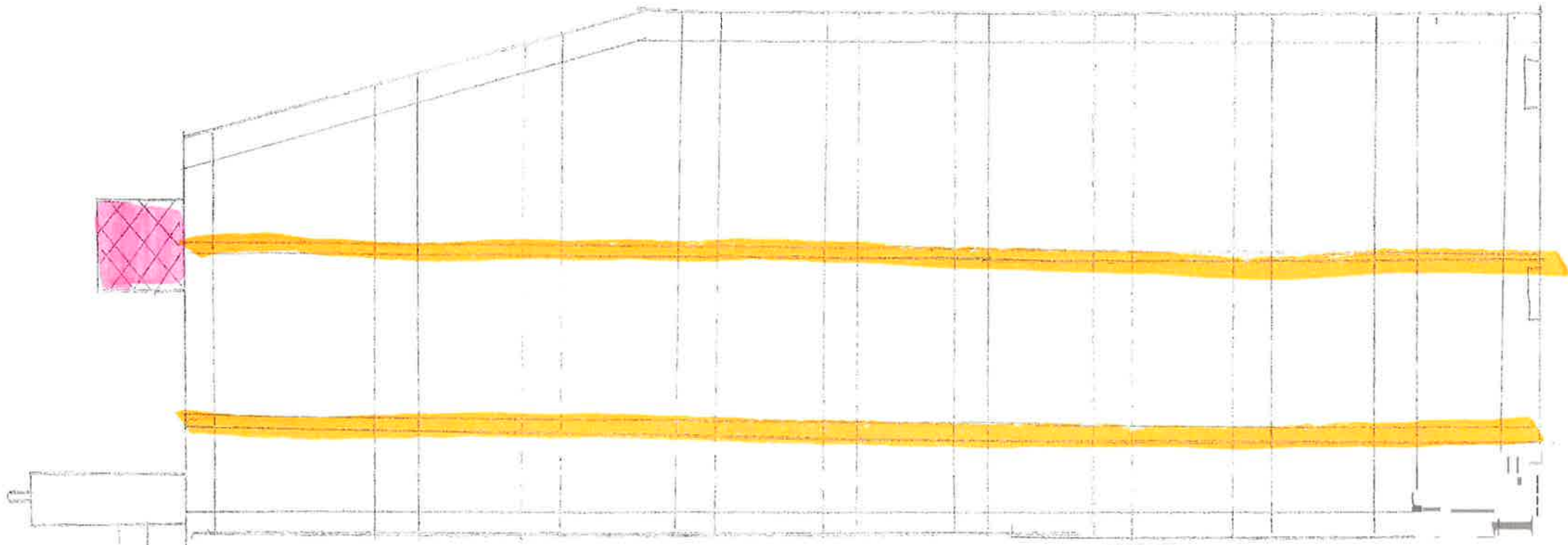


Left Side

Hinges, Reinforcements

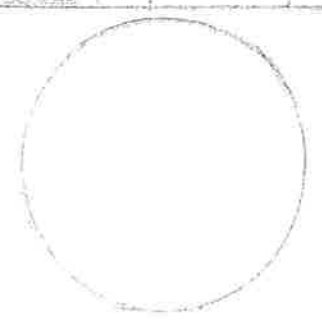
Asset

LEFT SIDE CUT OUT, 11 9 51 11 41 11 41 11 41



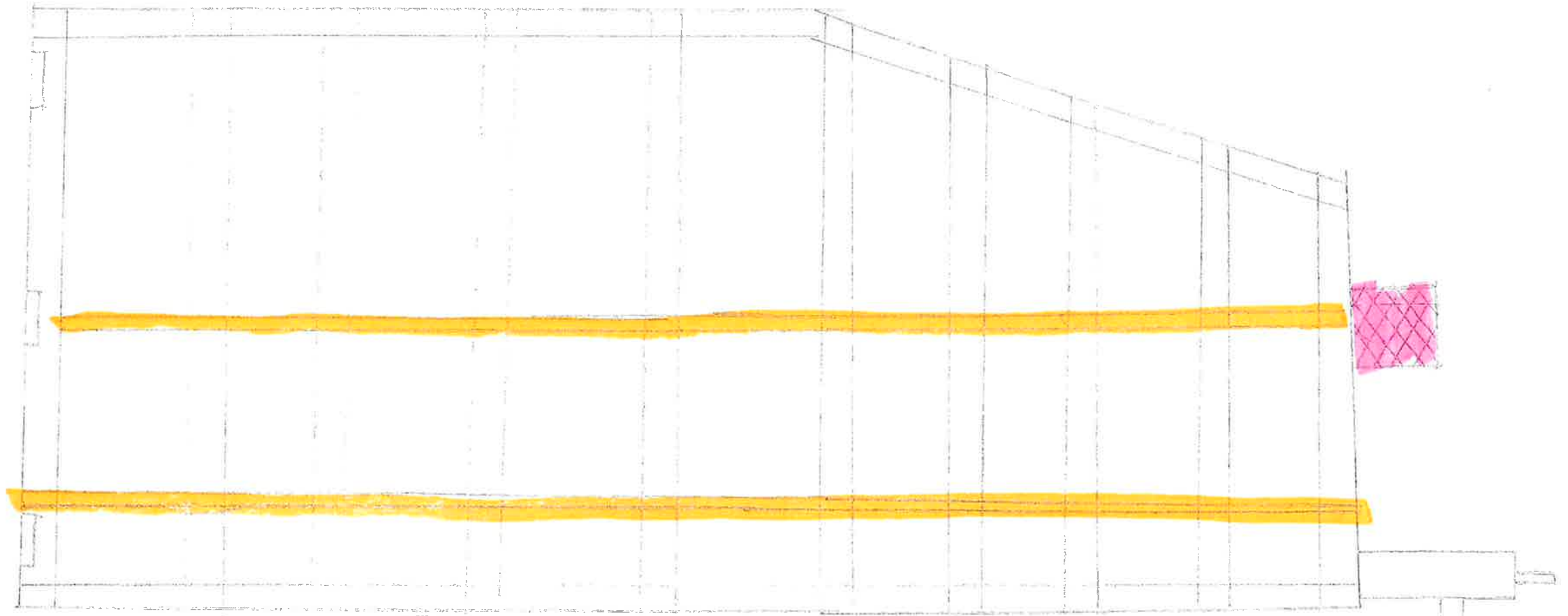
Orange
Replace side bar
see spec sheet

Pink
Replace tarp
basket see
spec sheet



ASSET - 74 71

301 102 05/2000 1195A 114

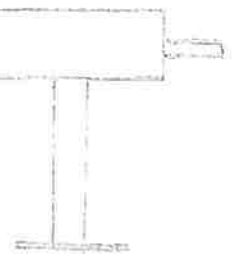


Orange

Replace side bar
See spec sheet

Pink

Repl + Cf-
See -5 Cf- 1111



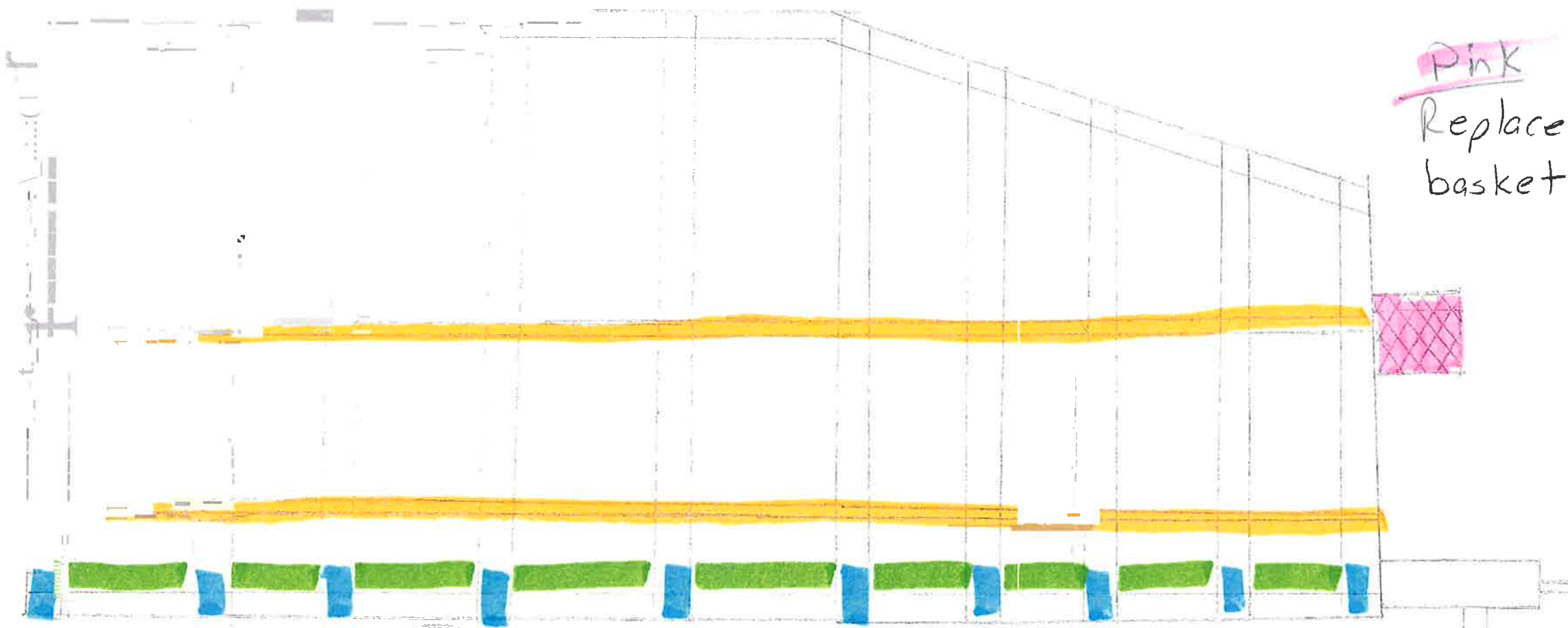
145507

RIGHT SIDE

1145A

114

114



Pink
 Replace tarp
 basket

Orange

Replace side bar
 See spec sheet

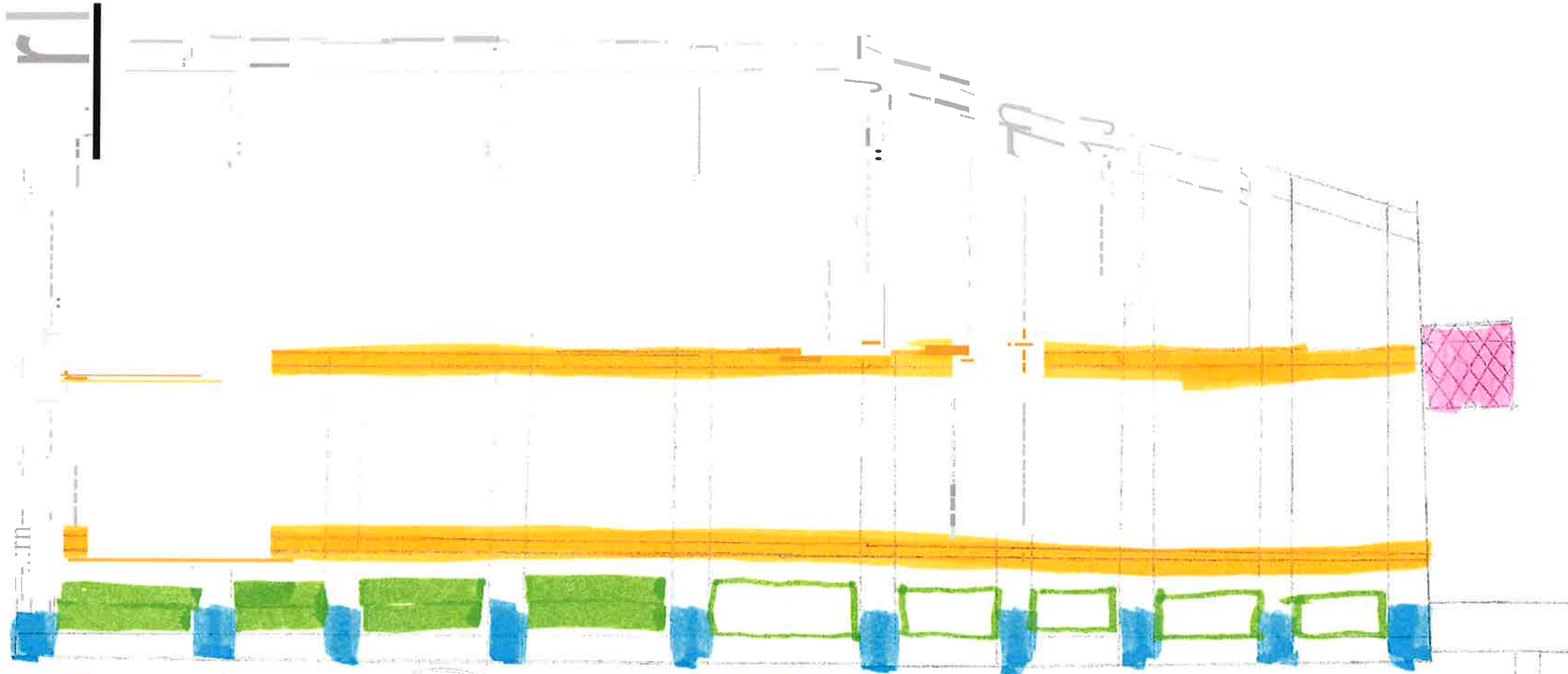


Blue

Repair / Replace
 4" Upright Channel

Green

Replace / Repair
 rust metal
 See spec sheet



Orange

Replace side Bar
See Spec Sheet

Blue

Repair/Replace side 4" upright channel
See Spec Sheet

Green Solid

Repair/Replace rust metal
See Spec Sheet

Green Line

Complete continuous
weld on new plate

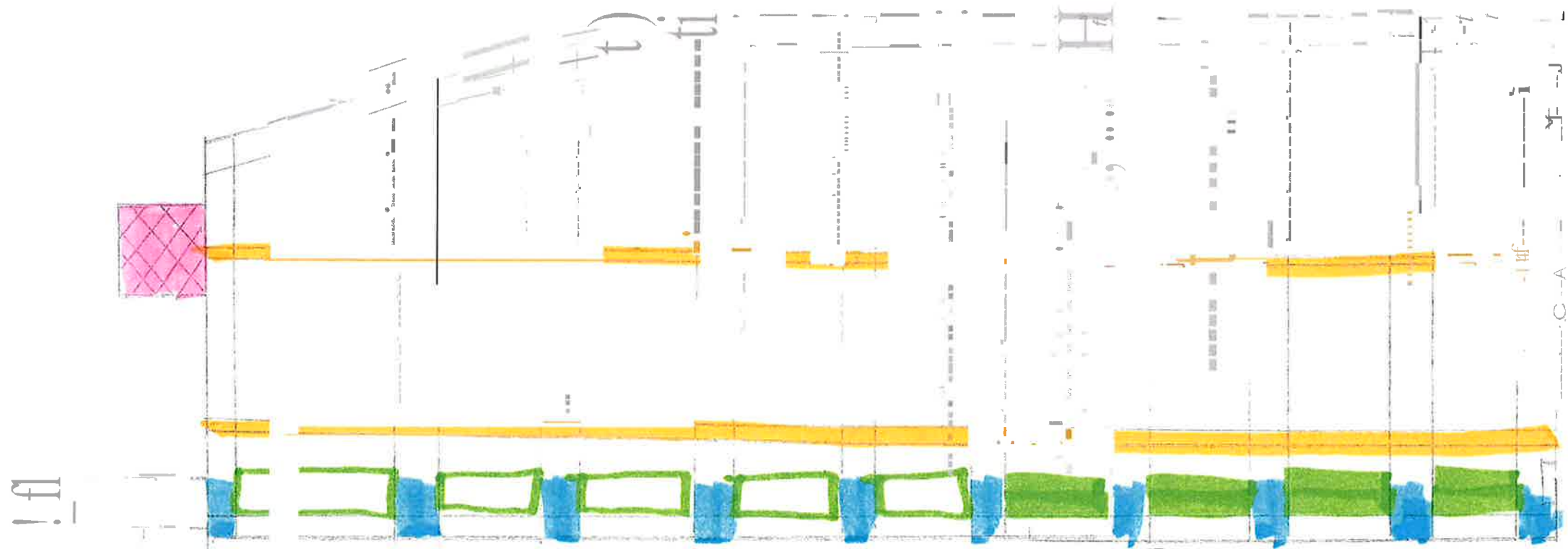
Pink

Replace tarp basket
See Spec Sheet

Asset #

LETT

(D) ver) 11 4 2011 16



Blue

Replace/Repair side
4" Upright Channel
see spec sheet

Green Solid

Repair/Replace rust
Metal see spec sheet

Orange

Replace side
Bar see spec sheet

Pink

Replace tarp basket
see spec sheet

Green Line

Complete continuous
weld on new plate

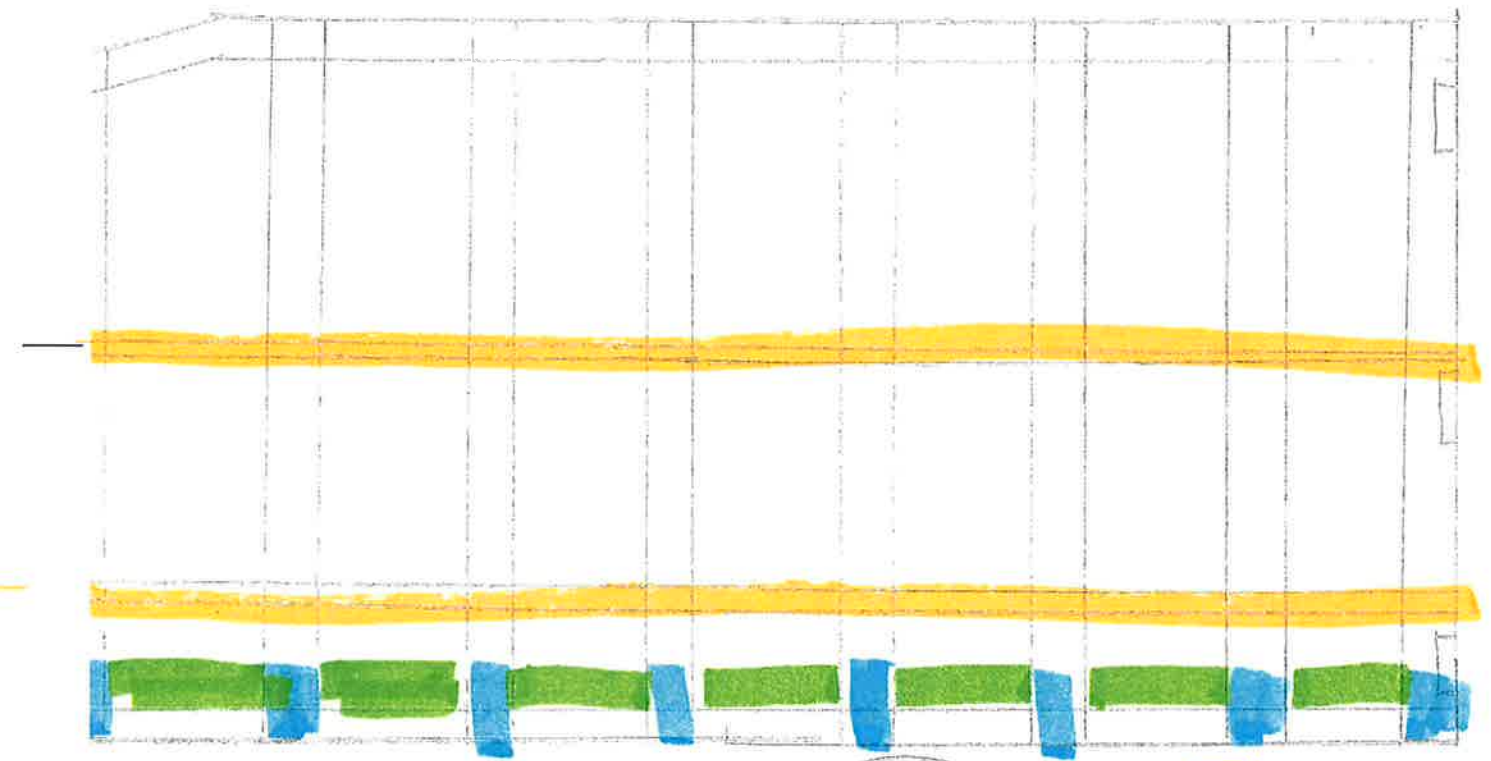
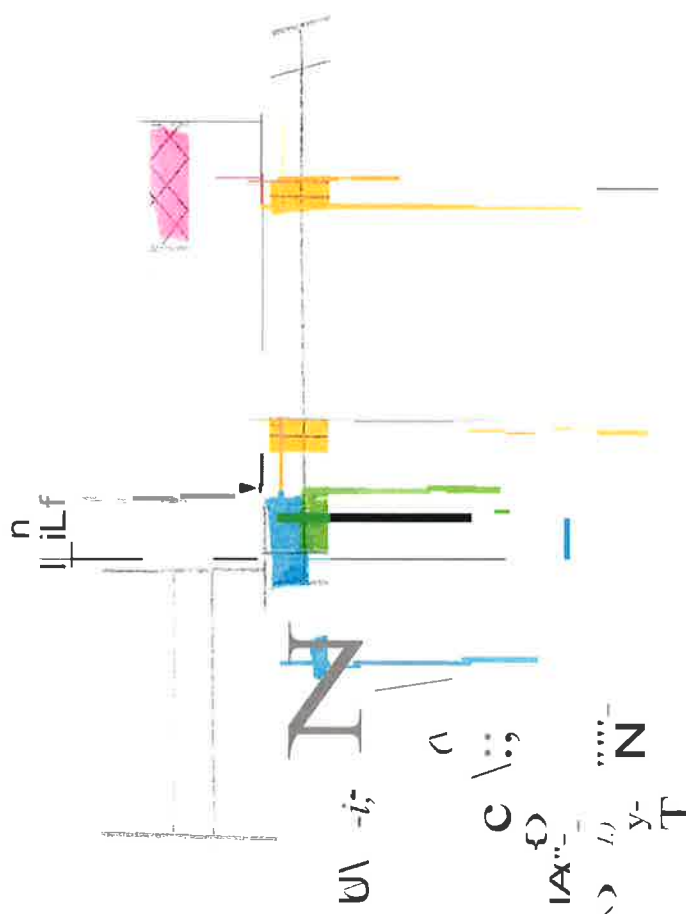


Left side (w/ ver) "



is" = t- W O-

W C "



Green

Replace/Repair
rust metal see
spec sheet



Orange

Replace side bar
See spec sheet

Sent from my iPhone



Rear Showing Hinges, Latch
AND Side/END Reinforcement

Sent from my iPhone



Latching Design

Sent from my iPhone
tate



LEFT REAR CORNER REPAIR
AND REINFORCEMENT



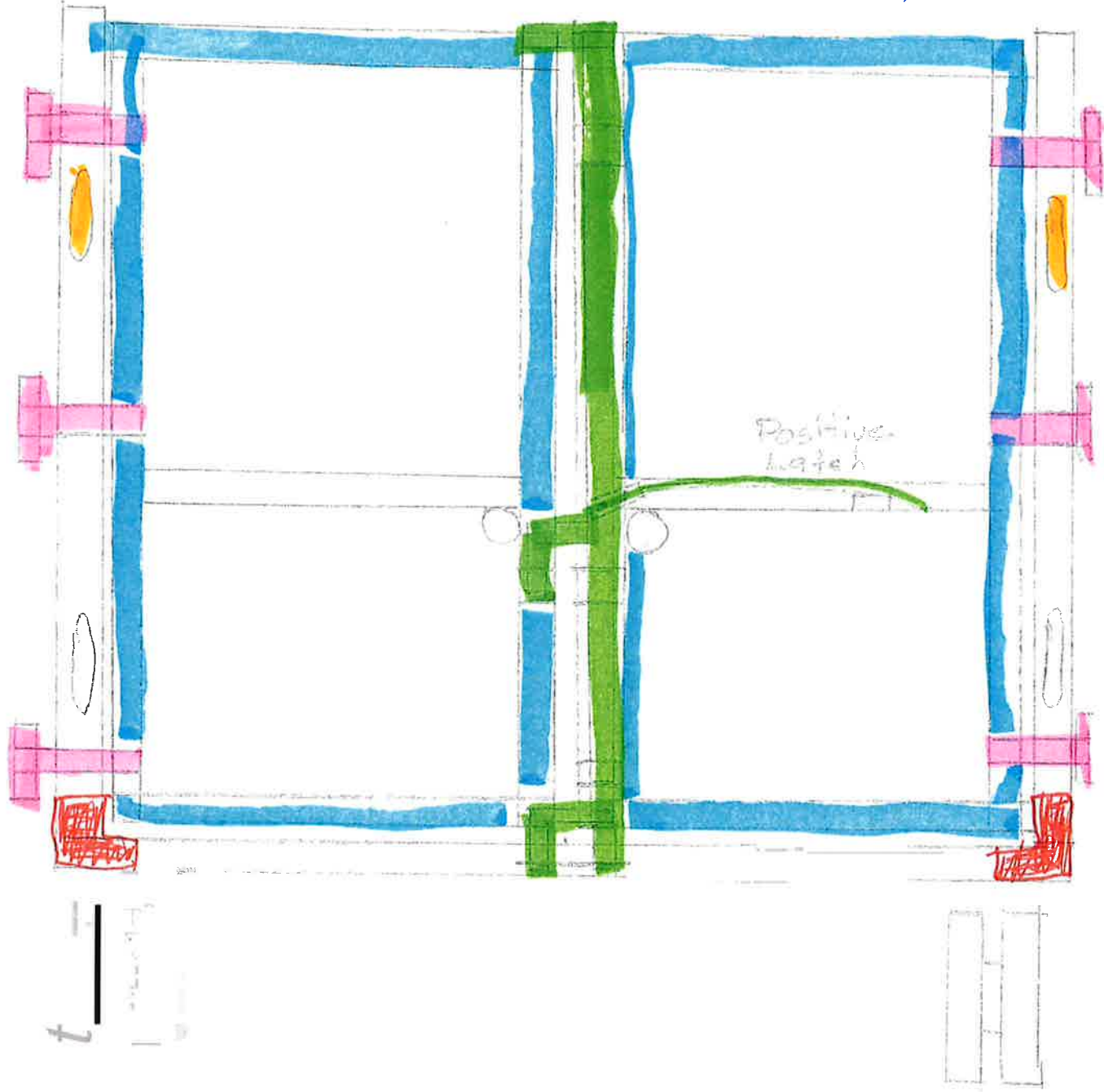
Hinge



litaj

r
+
c
v
u

?
+
f



Rear

Green

f

u

15- IK

R

r

t

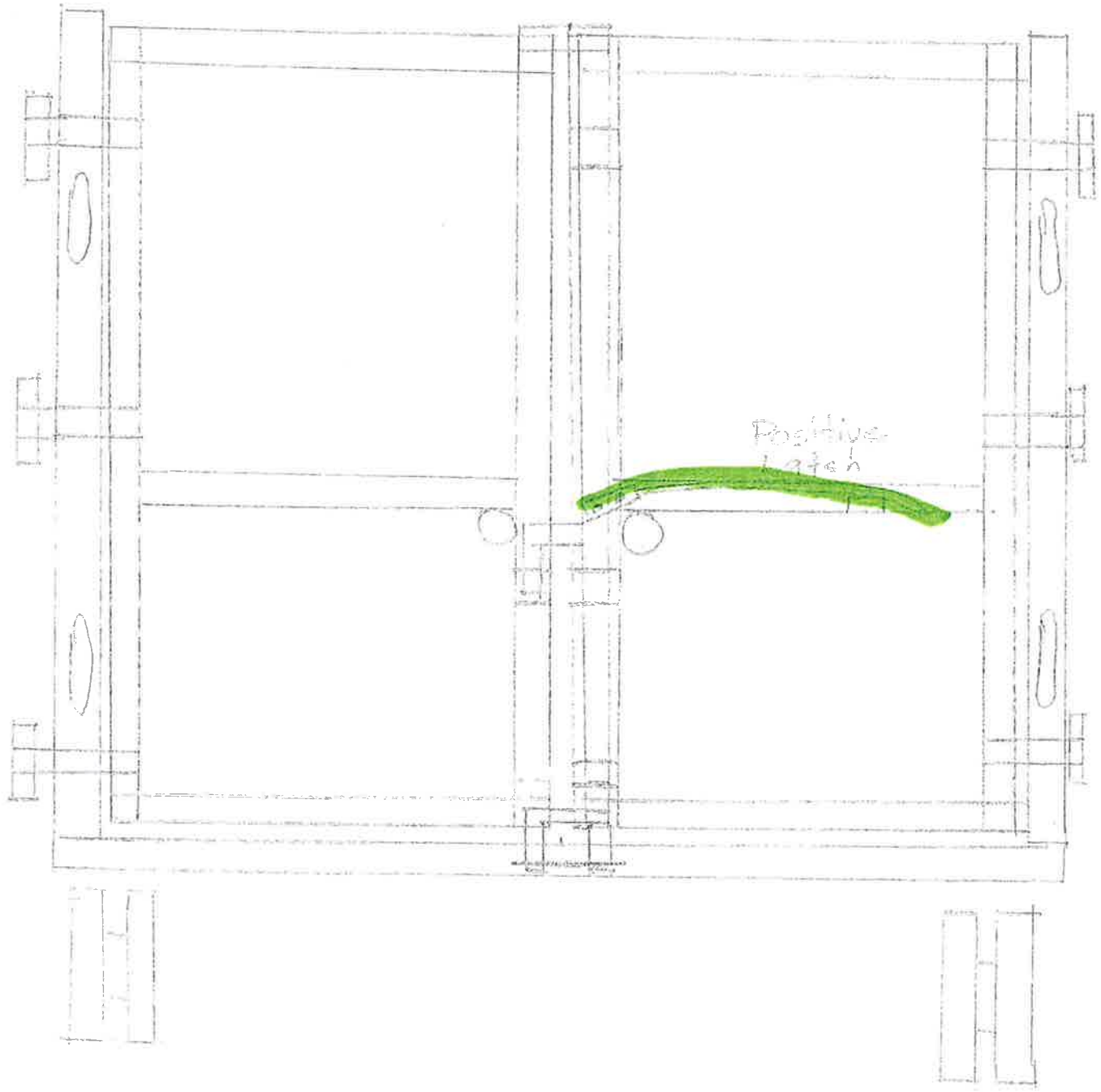
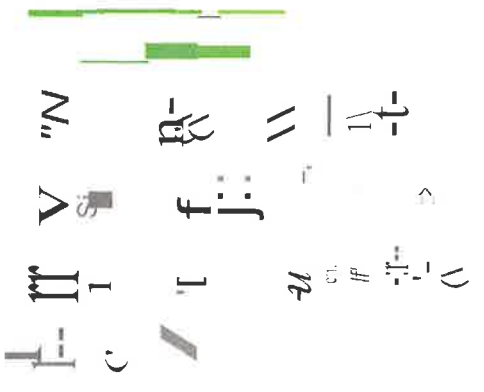
u

t

y

u

70091



Top
Rail
REPAIR



Top Rail Damage



PROCUREMENT DEPARTMENT

Potential bidders are responsible to check this site for any **ADDENDUMS** that are issued. It is the responsibility of the **BIDDER** to check for, download, and include with their **BID RESPONSE** any and all **ADDENDUMS** that are issued for a specific **BID** published by the City of Mobile. Failure to download and include **ADDENDUMS** in your **BID RESPONSE** may cause your bid to be rejected.

This is a sealed bid. Any responses faxed or e-mailed will be rejected.

This is a sealed bid. Any response must be submitted in a sealed envelope with the bid number and bid opening date on the outside of the envelope.

Any response that arrives improperly marked or with no bid number and opening date on the outside of the delivery or express package and opened in error will be rejected and not considered.

It is the responsibility of the bidder to insure that their bid response is delivered to and received in the Purchasing Department before the date and time of the bid opening.

Be sure to read the Terms and Conditions. All bids are F.O.B. Destination unless otherwise stated.

Be sure to sign your bid!

Package/Bid Delivery Address:
Purchasing Department
205 Government St. Room S408
Mobile, AL 36644

(Request First Delivery)