



## Addendum No. 2

To: Registered Planholders and Pre-Bid Conference Attendees

From: WAS Design, Inc.  
256 Wacker Ln. North  
Mobile, Alabama 36608  
251-344-4023

Re: Lavretta Park and Hillsdale Park Pickleball Courts  
Project No: PR-073-22/PR-041-22

This Addendum forms a part of, and modifies, the Contract Documents for the above referenced project. Acknowledge the receipt of this Addendum and all subsequent Addenda, if any, in the space provided on the Bid Form. Failure to do so may subject Bidder to disqualification.

---

### Addendum No. 2 – Nov. 01, 2023

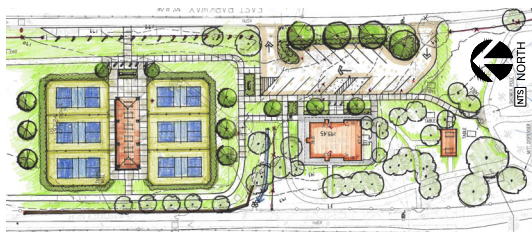
- Item No. 1: Net posts: Delete " 3" dia. net post"; Install " 2 - 7/8" dia. net post". Delete 6" dia. PVC pipe sleeve; replace w/ " 3" I.D. PVC pipe sleeve "
- Item No. 2: Net post concrete foundations dimension: delete 3'- 6" deep dimension; replace w/ 3'- 0" depth measurement
- Item No. 3: Specification Section "Pickleball Court Surfacing Section" 02462. 3.5.A: delete " 4-Inch wide playing lines " replace w/ " 2-Inch wide playing lines "
- Item No. 4: Specification Section Asphaltic Concrete Paving 02513 1.2.F.2.a – Delete " Maximum 1 / 8" in 10'-0", any direction " replace w/ " Maximum 1 / 4" in 10'-0" any direction "
- Item No. 5: 8' foot chain link fence elevation detail: delete 1 - 5 / 8" dia. intermediate rail from fence sections, intermediate rail for gates to remain. (Lavretta Park - LH501); (Hillsdale Park - LH504)
- Item No. 6: 32 Exterior Improvement Schedule; Symbol 32-29 (Lavretta Park LH100) Symbol 32-33 (Hillsdale Park LH100); delete " 5'-8" in Height "; replace w/ " 6' in Height "
- Item No. 7: There was an issue in the quantities shown on the landscape plan drawing. The issue has been corrected and the drawing has been updated with revisions clouded. Delete plant "LL2", adjust total for plant "LL". Sheet LPI00 attached.

# A Landscape Development Plan for Lavretta Park Pickleball Courts

PR-073-22 Mobile, Alabama

Prepared for  
**City of Mobile**  
Mobile, Alabama

Prepared by

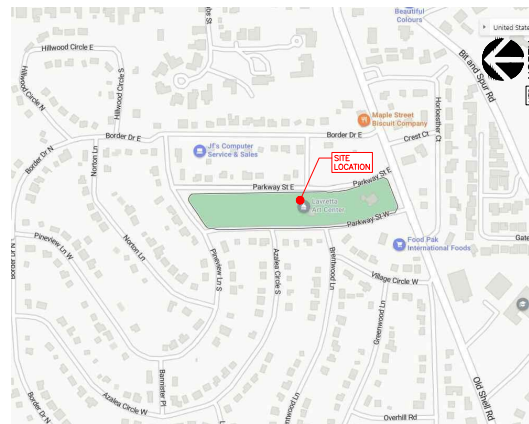


Sheet List Table	
Sheet Number	Sheet Title
CS100	COVER SHEET
LS010	OVERALL SITE PLAN
EC100	EXISTING CONDITIONS
LD100	LANDSCAPE DEMOLITION PLAN
LS100	LANDSCAPE SITE PLAN
LG100	GRADING AND DRAINAGE PLAN
LH100	HARDSCAPE PLAN
LH500	HARDSCAPE DETAILS
LH501	HARDSCAPE DETAILS
LH502	HARDSCAPE DETAILS
LH503	HARDSCAPE DETAILS
LH504	HARDSCAPE DETAILS
LP100	LANDSCAPE PLANTING PLAN
LP500	LANDSCAPE PLANTING DETAILS
C1.1	CIVIL GRADING & DRAINAGE PLAN
C1.2	CIVIL DETAILS
C1.3	CIVIL NOTES
E100	ELECTRICAL LEGEND AND SPECIFICATIONS
E200	ELECTRICAL SITE PLAN - EXISTING
E300	ELECTRICAL SITE PLAN - NEW WORK
E400	ENLARGED PICKLEBALL COURT LIGHTING - NEW WORK
E500	ENLARGED PAVILION LIGHTED - POWER - NEW WORK
E600	NORTH PARKING LOT LIGHTING - NEW WORK
E700	SOUTH PARKING LOT LIGHTING - NEW WORK
E800	ELECTRICAL DETAILS
E900	ELECTRICAL DETAILS

△△△  
△  
△  
△  
△

## ABBREVIATION LEGEND

ALUM	ALUMINUM	LP	LOW POINT
AC	ACRES	LT	LEFT
ACCP	ASPHALT-COATED CORRUGATED METAL PIPE	LN	LINEAR FEET
ACP	ASBESTOS CEMENT PIPE	LA	LANDSCAPE ARCHITECT
APPROX	APPROXIMATE(LY)	M	METER
BAB	BALLED AND BURLAPPED	MA	MAXIMUM
BC	BOTTOM OF CURB	MH	MANHOLE
BT	BITUMENOUS	MIN	MINIMUM
BM	BENCHMARK	MISC	MISCELLANEOUS
BLDG	BUILDING	MON	MONUMENT
BVC	BOTTOM OF SLOPE	N	NORTH
BW	BOTH WAYS	NIC	NOT IN CONTRACT
CALL	CALLER	NTS	NOT TO SCALE
CB	CATCH BASIN	NO	NUMBER
CI	CAST IRON	NOM	NOMINAL DIMENSION
CR	CIRCULAR	OC	ON CENTER
CL	CENTERLINE	OD	OUTSIDE DIAMETER
CLF	CHAIN-LINK FENCE	PA	PLANTING AREA
CO	CLEANOUT	PCP	POROUS CONCRETE PIPE
CM	CENTER	PVC	POLYVINYL CHLORIDE PIPE
CMP	CORRUGATED METAL PIPE	PC	POINT OF CURVATURE
COL	COLUMN	PCC	POINT OF COMPOUND CURVATURE
CONC	CONCRETE	PL	PROPERTY LINE
CONTR	CONTRACTOR	PVC	POINT OF VERTICAL CURVATURE
COR	CORNER	PVT	POINT OF VERTICAL TANGENT
C/S	CROSS SLOPE	PT	POINT OF TANGENT
C/W	CONNECTED WITH	R	RADIUS
CF	CUBIC FEET	RCP	REINFORCED CONCRETE PIPE
CF	CUBIC YARD	ROW	RIGHT OF WAY
D	DEGREE OF CURVATURE	REQD	REQUIRED
DETAL	DETAIL	REV	REVISION
DMH	DRIP MANHOLE	REIN	REINFORCED
DF	DRINKING FOUNTAIN	SAN	SANITARY
DM	DIMENSION	SECT	SECTION
DIA	DIAMETER	SH	SHEET
DWG	DRAWING	SI	SOUTH
DEP	DEPARTURE	SI	STORM INLET
DIR	DIRECTED	ST-	STORM SEWER
-E-	ELECTRICAL	-SAN-	SANITARY SEWER
EA	EAST	SPEC	SPECIFICATIONS OR SPECIFIED
EACH	EACH	STL	STEEL
EL	ELECTRICAL CONTRACTOR	SQ	SQUARE
ELEV	ELEVATION	SF	SQUARE FOOT
EAP	EXPOSED AGGREGATE PAVING	STA	STATION
ENG	ENGINEER	S/S	STAINLESS STEEL
ENR	EXISTING	T	TANGENT
EX	EXPANSION	TC	TOP OF CURB
EXP	EXPANSION	TOP	TAPERED END
EW	END WALL	TS	TERRA-COTTA PIPE
ES	END SECTION	T&G	TONGUE AND GROOVE
FEE	FINISHED FLOOR ELEVATION	TW	TOP OF WALL
FIN	FINISH	TS	TOP OF SLOPE
FL	FLOOR	TYP	TYPICAL
FI	FIRE HYDRANT	U	UNDERDRAN
FL	FLOW LINE	USGS	US GEOLOGICAL SURVEY
FSD	FULL-SIZED DETAIL	VC	VERTICAL CURVE
FTD	FOOTING	VAR	VARIABLE
FT	FOOT OR FEET	VERT	VERTICAL
GA	GAUGE	W	WATER
GAS	GAS	W	WEST
GAL	GALLON	W/	WITH
GALV	GALVANIZED	W/O	WITHOUT
GC	GENERAL CONTRACTOR	WWM	WOMEN WISE MESH
GD	GRADE	WT	WATER VALVE
GV	GIS VALUE	YD	YARD DRAIN
HB	HOSE BIB		
HW	HEAD WALL		
HP	HIGH POINT		
HT	HEIGHT		
HOR	HORIZONTAL		
HWY	HIGHWAY	Ø	ROUND DIAMETER
ID	INSIDE DIAMETER	Ø	AT
IN	INCH	·	FEET
INL	INLET	·	INCHES
INV	INVERT	#1	NUMBER
JBX	JUNCTION BOX	#	NUMBER
LB	LENGTH OF CURVE	⊥	PERPENDICULAR
LAT	LATITUDE		



## CONSTRUCTION LAYOUT NOTES

SURVEYOR TO CONTACT LANDSCAPE ARCHITECT FOR AUTOCAD FILE FOR HARDSCAPE LAYOUT.  
CONTRACTOR TO PROVIDE STAKING OF HARDSCAPE ELEMENTS AS REQUIRED FOR WORK.  
CONTACT LANDSCAPE ARCHITECT FOR REVIEW OF LOCATIONS PRIOR TO COMMENCEMENT OF CONSTRUCTION.

## PROJECT SUMMARY

THE PROJECT DESCRIBED WITHIN THESE DRAWINGS AND THE ACCOMPANYING PROJECT MANUAL IS A LANDSCAPE DEVELOPMENT PROJECT THAT COVERS WORK DESCRIBED AS:

- DEMOLISH EXISTING BASKETBALL COURTS AND PEDESTRIAN PAVING;
- SITE PICKLEBALL COURTS; PAVILION; PARKING; PEDESTRIAN PAVING; FURNITURE; BENCHES; DRINKING FOUNTAIN; TRASH RECEPTACLE;
- LULLIES; STORMWATER/DRAINAGE; SITE ELECTRICAL/LIGHTING; WATER (DRINKING FOUNTAIN);
- GRADING; ADA ACCESSIBLE AMENITIES AND CIRCULATION; STORMWATER/DRAINAGE.

THIS PROJECT WILL BE COMPETITIVELY BID WITH THE OWNER DETERMINING THE WINNING SUBCONTRACTOR AT HIS SOLE DISCRETION. THE CONTRACT AMOUNT SHALL BE BASED UPON A STIPULATED SUM THAT IS INDICATED ON THE PROJECT'S BID FORM. THE WORK AGREEMENT SHALL BE BETWEEN THE CONTRACTOR AND THE PROJECT OWNER. THE OWNER HAS RETAINED THE SERVICES OF WAS DESIGN, INC. TO ASSIST IN CONSTRUCTION OBSERVATION AND CONTRACT ADMINISTRATION.

800-292-8525  
#DIG (Cellular)  
Dig Safely.

**Alabama 1 Call**



A Landscape Development Plan for  
**Lavretta Park  
Pickleball Courts**  
PR-073-22 Mobile, Alabama

Revisions	
No.	Date
08.30.23	85% CONSTRUCTION DRAWINGS
09.29.23	100% CONSTRUCTION DRAWINGS
△ 10.25.23	ADDENDUM 1
△ 11.01.23	ADDENDUM 2, ITEM 7

© Copyright 2022 WAS Design Inc. These documents and their contents are the property of WAS Design. Any reproductions, revisions, modifications or use of these documents without the express written consent of WAS Design is prohibited by law.

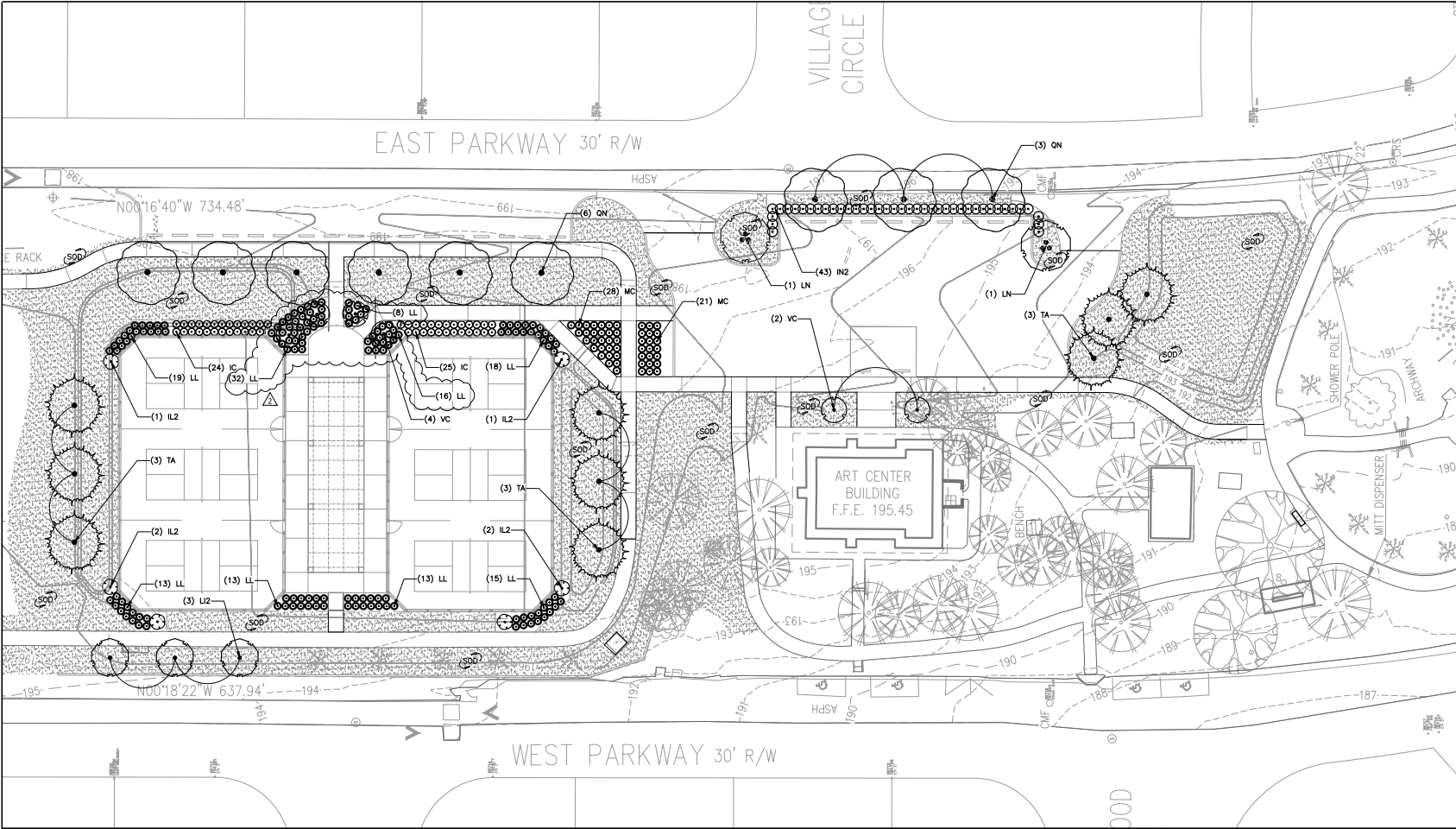
Registration  
 State of Alabama  
 Professional Seal  
 Project Manager  
 JEC  
 Project  
 226010-025  
 Project No.  
 05.19.23  
 Date

COVER SHEET

Sheet No.  
**CS100**

**PLANT SCHEDULE**

TREES	CODE	ESTIMATED QTY	BOTANICAL / COMMON NAME	CONT	SHRUBS	CODE	ESTIMATED QTY	BOTANICAL / COMMON NAME	CONT	SPACING
	IL2	6	ILEX X 'CONTY' / LIBERTY™ HOLLY MIN.: 9'-6" H.	30 GAL		IC	50	ILEX CORNUTA 'CARISSA' / CARISSA CHINESE HOLLY	3 GAL	36" o.c.
	LI2	3	LAGERSTROEMIA INDICA / CRAPE MYRTLE MATCH EXISTING	30 GAL		IN2	41	ILEX CORNUTA 'NEEDLEPOINT' / NEEDLEPOINT CHINESE HOLLY 3 FT O.C. SPACING	7 GAL	48" o.c.
	LN	2	LAGERSTROEMIA INDICA X FAURIEI 'NATCHEZ' / NATCHEZ CRAPE MYRTLE MIN.: 8' H. MIN. 3" TRUNK; FULL HEAD, MIN. 1" CAL. PER TRUNK	30 GAL		LL	147	LOMANDRA LONGIFOLIA / BREEZE RUSH	3 GAL	36" o.c.
	QN	9	QUERCUS NUTTALLII / NUTTALL OAK MIN.: 8'-10" H.	30 GAL OR B&B		MC	49	MUHLENBERGIA CAPILLARIS / PINK MUHLY GRASS	3 GAL	36" o.c.
	TA	9	TAXODIUM ASCENDENS / POND CYPRESS MIN.: 8'-10" H.	30 GAL OR B&B	<b>SOD</b>	<b>CODE</b>	<b>BOTANICAL / COMMON NAME</b>	<b>CONT</b>	<b>SPACING</b>	
	VC	6	VITEX X 'BALT' / TEXONE® / FIRST EDITIONS® FLIP SIDE® CHASTE TREE MIN.: 6'-8" H.	30 GAL		CT	28,286 SF	CYNODON DACTYLON 'TIF 419' / TIF 419 BERMUDAGRASS	SOD	



**1 PLANTING PLAN**  
Scale: 1" = 20'



A Landscape Development Plan for  
**Lavretta Park**  
**Pickleball Courts**  
 PR-073-22 Mobile, Alabama

No.	Date	Revisions / Submissions
08.30.23	85% CONSTRUCTION DRAWINGS	
09.29.23	100% CONSTRUCTION DRAWINGS	
11.01.23	ADDENDUM 2, ITEM 7	

© Copyright 2023 WAS Design Inc. These documents and their contents are the property of WAS Design. Any reproductions, revisions, modifications or use of these documents without the express written consent of WAS Design is prohibited by law.

ABS Registration  
 Drawn  
 Project Manager  
 JEC  
 Principal  
 226010-025  
 Project No.  
 05.19.23  
 Date

**LANDSCAPE PLANTING PLAN**

Sheet No. **LP100**