

RECONNECTING

ONE MOBILE: RECONNECTING PEOPLE, WORK AND PLAY THROUGH COMPLETE STREETS



PROJECT NEWS

The City of Mobile is excited to announce a new revitalization initiative - the TIGER Grant project. We will update you about the project via a monthly newsletter. Each issue will have a status report, explain what's happening next and where and provide fun facts about the project. We look forward to connecting with you as we improve our city.

PROJECT LOOK AHEAD

While the City of Mobile aims to minimize inconveniences, heavy equipment use will cause occasional lane restrictions and detours. On-site variable direction signs will provide instructions, and we will post notices about traffic changes on the city's website, Facebook page and in this newsletter.

TIGER Grant team members will also regularly visit homeowners, residents and businesses to share information about the project's current construction phase.

We encourage all to connect with the TIGER Grant by checking the project's information pages and signing up to receive the newsletter. To sign up for the newsletter email us at 1mobileinfo@epr-corp.com or visit our webpage at

www.cityofmobile.org/reconnectingmobile/tiger-grant

TIGER PROJECT PROGRESS

- The contractor has continued demolition of the Broad Street SB lanes, removing and hauling off the existing concrete roadway, curb & gutter, etc. all the way to Congress Street
- Erosion control devices and tree protection fences have been installed promptly as ground was exposed
- Excavation has started on the north end for placement of pipe and drainage structures
- Removal of light poles has also begun



Next Steps

- Work will continue on the southbound side
- Remainder of old concrete roadway will be removed
- Placement of storm sewer will continue
- Placement of new Curb & Gutter and sidewalk will begin
- Removal of light poles will be completed
- Utility relocation will ramp up

TREE PROTECTION

As Alabama's first community to become a Tree City USA® in 1979, the City of Mobile understands the importance of trees in urban environments.

Because we cherish our trees, we'll be taking important measures during the TIGER Grant construction project to protect our trees from construction damage. For example, we have placed noticeable fencing near and around each remaining tree. We've also met with interested parties to emphasize tree preservation along the project corridor. Finally, the City of Mobile's Urban Forester will conduct regular site visits to monitor the health of the trees within the construction zone and determine if safety procedures are being properly followed.

Through all phases of construction, the project's team will ensure that all tree-protection barriers are sturdy and highly visible to help prevent accidental entry into the Tree Protection Zone (TPZ). Certain activities will be prohibited in the TPZ include stockpiling materials of any type, attaching anything to tree trunks, and digging trenches in or near the trees' root zones.

Visit our webpage at www.cityofmobile.org/reconnecting-mobile/tiger-grant to view the tree plan for the project.

Information provided courtesy of the Alabama Forestry Commission+++



COMMUNICATION IS KEY !

GOOD NEIGHBORS

Do you live in Mobile and like parades? We hope you were able to enjoy one of the best parades of the season that took place on September 28th at Bishop State Community College. It featured local high school bands along with bands from Alabama A&M University, Central State University, and Talladega College. Of course, one of the best places to view the parade is right in front of Bishop State Community College, where road construction is taking place. This year, a unique challenge to the parade route needed to be addressed: How do you have a parade in a construction area?

Communication is key. When Bishop State officials shared their concerns about having the parade on Broad Street, the project administrators discussed it, and the roadway was opened for the event.

TIGER CONSTRUCTION PROJECT PHOTO GALLERY

The TIGER Grant construction project (phases 1 and 2) that will transform sections of Broad and Beauregard as part of the One Mobile Initiative continues in earnest. Here are some photos depicting progress on the project to date.



TIGER Project Ground Breaking



Demolition Begins



More Demolition

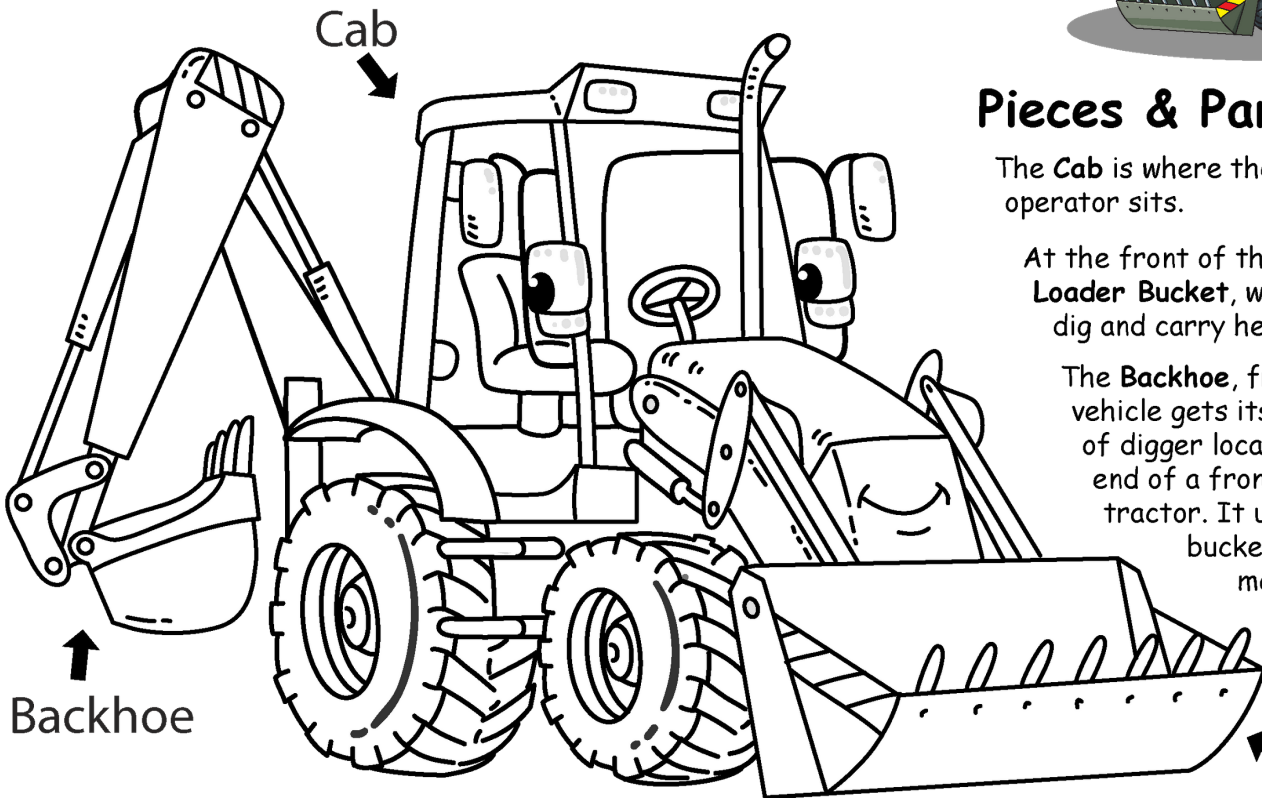


2019 Gulf Coast Challenge Parade



Color Me

Backhoe



Pieces & Parts

The **Cab** is where the equipment operator sits.

At the front of the backhoe is a **Loader Bucket**, which is used to dig and carry heavy loads.

The **Backhoe**, from which the vehicle gets its name, is a type of digger located on the back end of a front loader or tractor. It uses an arm and bucket to dig or scoop material toward the equipment.