

**ONE MOBILE:** RECONNECTING PEOPLE, WORK AND PLAY  
THROUGH COMPLETE STREETS

## IN THIS ISSUE



Project Progress  
So Far



What to Expect



What's it For?

Welcome to the tenth edition of the Revitalizing Broad Street Improvement Project's **RECONNECTING** newsletter. In this issue, you will find out what is happening now and what comes next, as well as information on curb ramps.

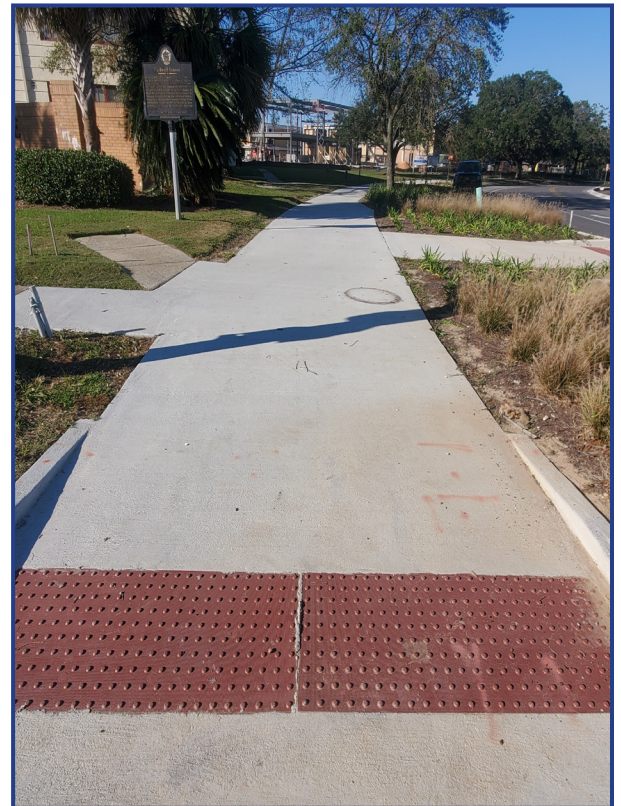
## BROAD STREET CURB RAMPS

Curb ramps play an integral part in making cities more walkable for everyone. The Broad Street Redevelopment Project will provide pedestrians with an easy way to navigate the area and get where they are going.

Generally, ramped intersections have one curb ramp for each direction. When multiple ramps are installed at crosswalks, the ramps provide more guidance for people with failing eyesight — leading them in a specific direction.

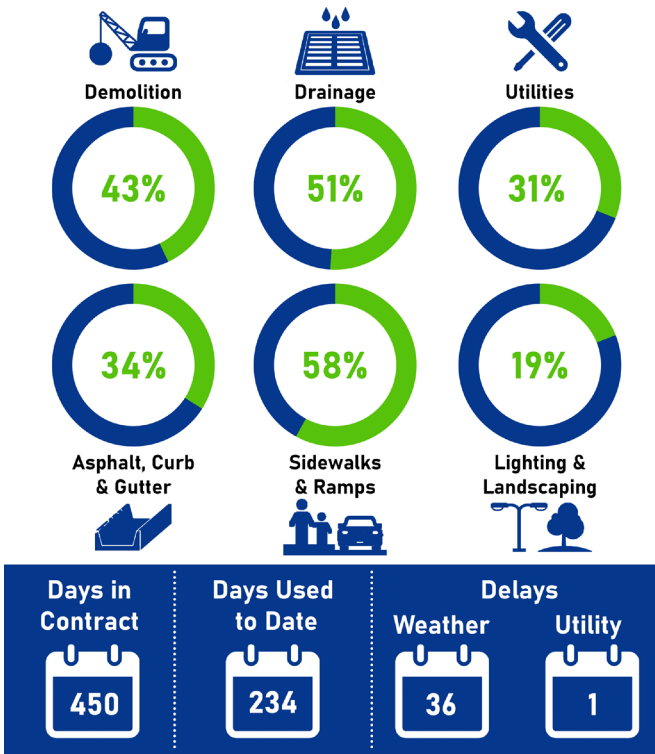
Alternatively, when a curb ramp is in the middle of a curve, the user must first descend the ramp and then turn in the direction they wish to travel. In Mobile, curb ramps include a two-foot-wide red warning strip. These tactile strips at the bottom of the curb ramps are the standard requirements for transitions from sidewalks to street crossings.

ADA guidelines require these strips at the edge of every newly constructed sidewalk and curb ramp. The truncated domes, or bumps, on the surface provide a warning to pedestrians with visual impairments that they are approaching the street.



## WHAT TO EXPECT

- **BROAD STREET:** Paving crews will start working on the lanes between St. Anthony Street and Lawrence Street in the coming weeks.
- **ROUNDAABOUT:** Now that utility work nears completion, the utility crews will focus their efforts on completing tie-ins and testing the updated facilities. Road crews are building up the subgrade for the truck apron before the stamped concrete can be placed.



## PROJECT NEWS

- Crews are continuing work on the sewer and storm drain system, including making new maps and measurements. This will help future crews make repairs easier and faster.
- The bike lane on Broad Street is nearing completion as crews finish their work adjacent to the path. The bike path will make Mobile a more pedestrian and cycling-friendly city with a separation from the roadway. This bike path connects to other paths such as Canal and Water Streets, and eventually the Three Mile Creek Greenway.

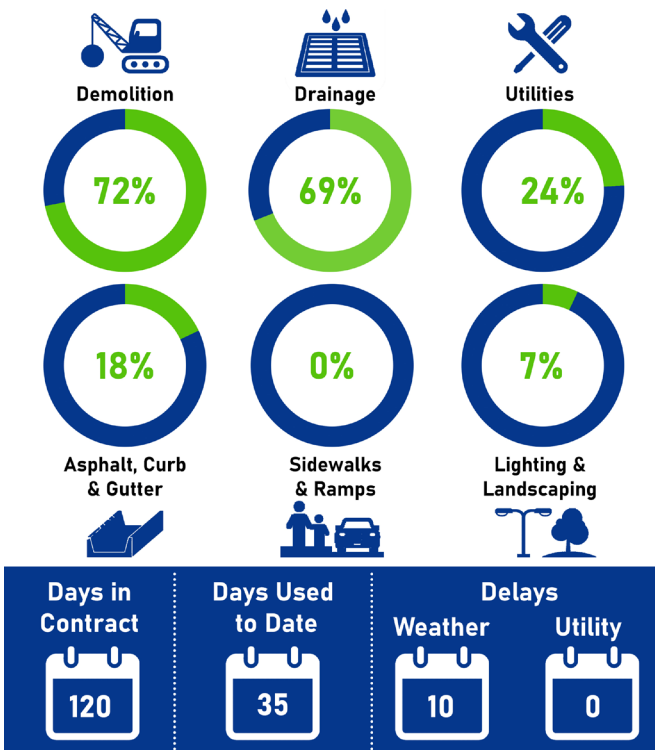


Crews are finishing work adjacent to the bike path.



Crews working on the sewer system are tying in a waterline bore stub.

## ROUNDBOUT CONSTRUCTION PROGRESS



## PROJECT NEWS

- Construction crews are almost finished building up the center of the roundabout. They have added the G curb and are now constructing the truck apron.
- Concrete for a new sidewalk has been placed, but not all sidewalks are open in the construction zone. Signs and barricades have been installed to guide pedestrians safely around the construction. Even if no workers are present, pedestrians should stay in the designated path and never cross over into the construction zone.



Reflective road signs have been installed to increase safety around the work zone.



The center of the roundabout is almost ready for landscaping.