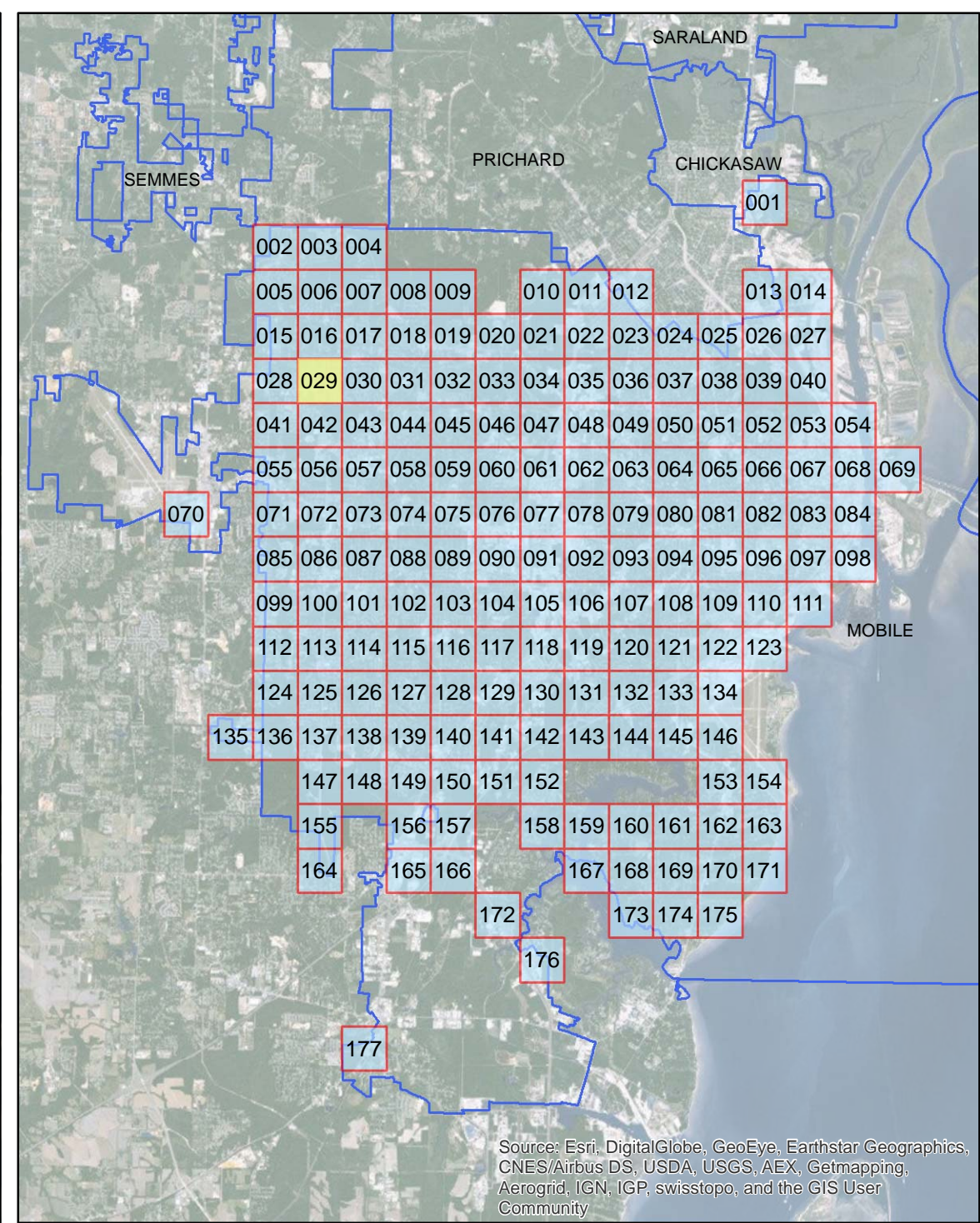
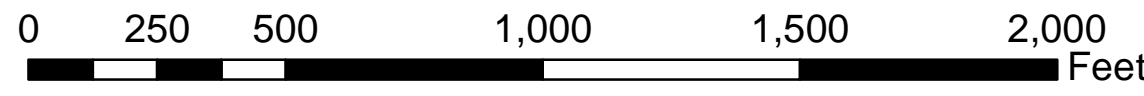




Source: Esri, DigitalGlobe, GeoEye, Earthstar Geographics, CNES/Airbus DS, USDA, USGS, AEX, Getmapping, Aerogrid, IGN, IGP, swisstopo, and the GIS User Community



Source: Esri, DigitalGlobe, GeoEye, Earthstar Geographics, CNES/Airbus DS, USDA, USGS, AEX, Getmapping, Aerogrid, IGN, IGP, swisstopo, and the GIS User Community



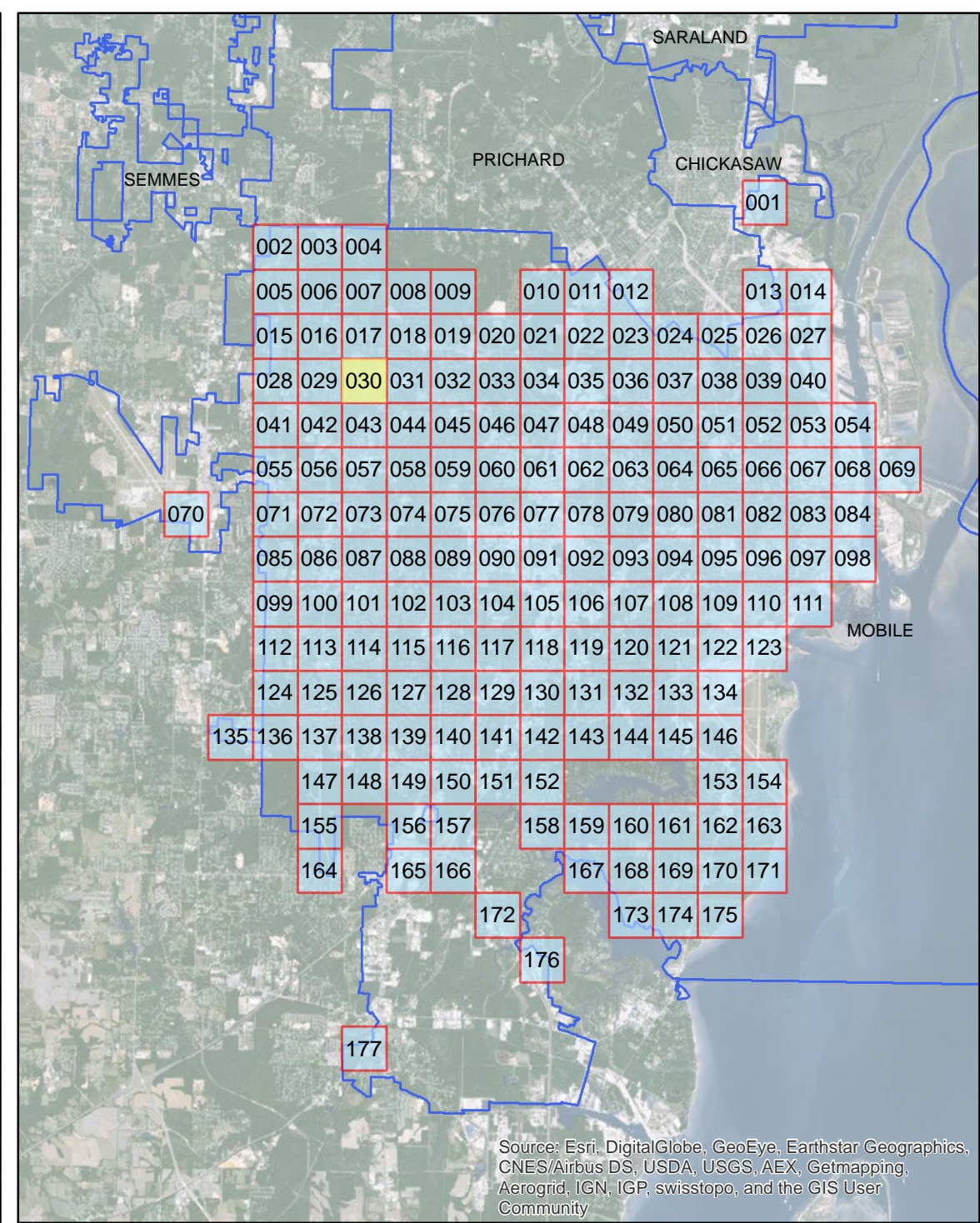
ADA Transition Plan City of Mobile

- Legend**
- Layer**
- Sidewalk Meets Standards
 - Handicap Ramp Replacement
 - >75% Needs Replacement
 - Approximately 25% Needs Repair

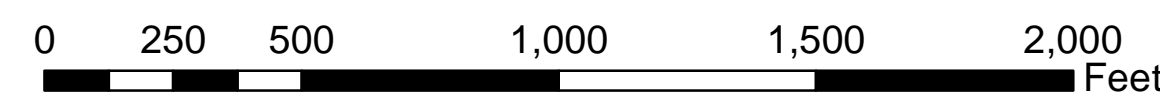




Source: Esri, DigitalGlobe, GeoEye, Earthstar Geographics, CNES/Airbus DS, USDA, USGS, AEX, Getmapping, Aerogrid, IGN, IGP, swisstopo, and the GIS User Community



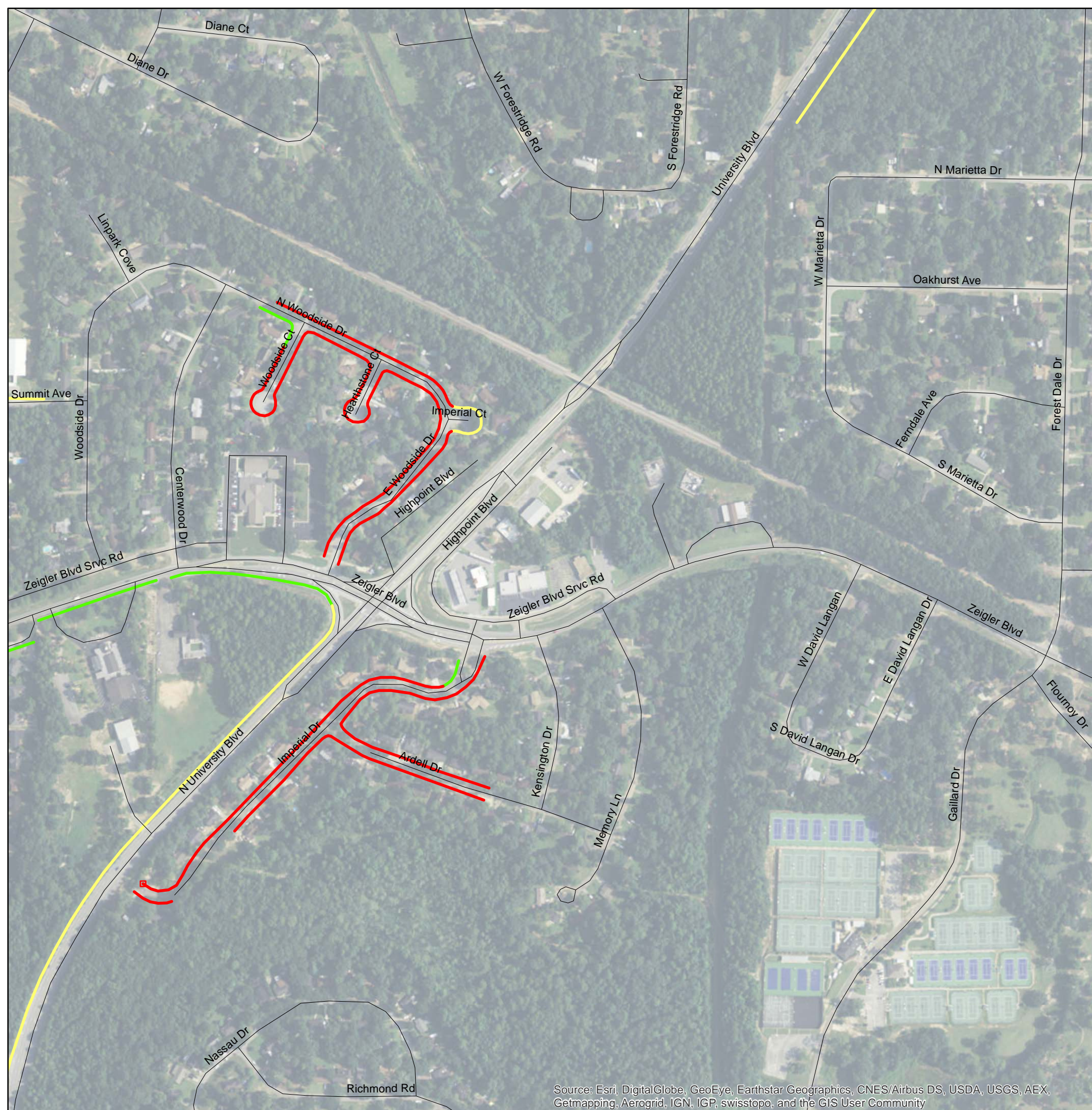
Source: Esri, DigitalGlobe, GeoEye, Earthstar Geographics, CNES/Airbus DS, USDA, USGS, AEX, Getmapping, Aerogrid, IGN, IGP, swisstopo, and the GIS User Community



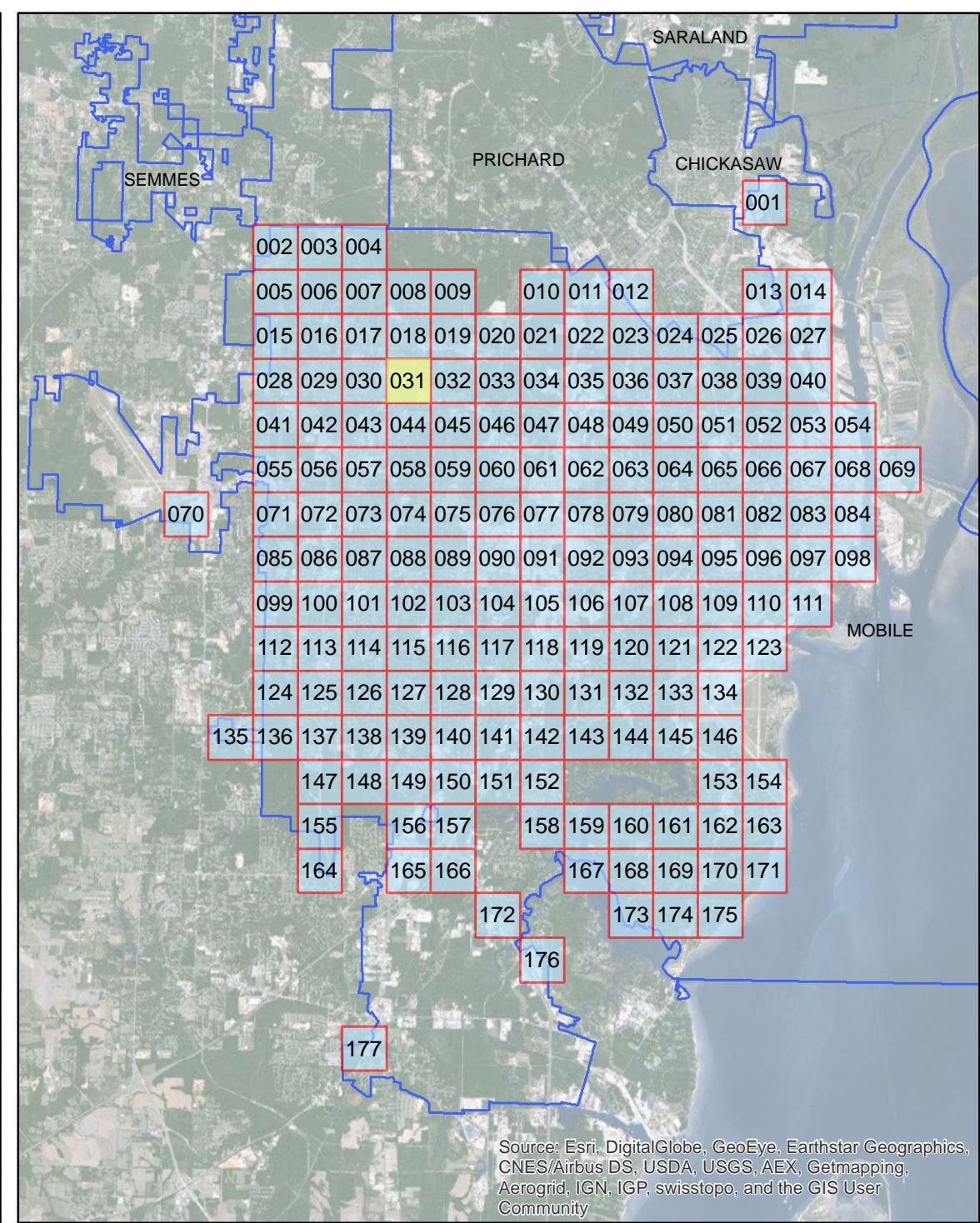
ADA Transition Plan City of Mobile

- Legend**
- Layer**
- Sidewalk Meets Standards
 - Handicap Ramp Replacement
 - >75% Needs Replacement
 - Approximately 25% Needs Repair

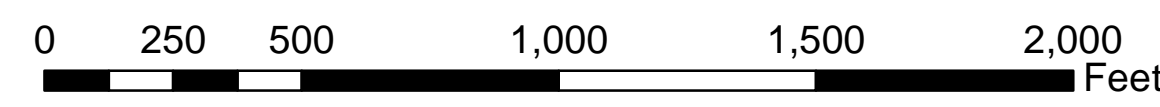




Source: Esri, DigitalGlobe, GeoEye, Earthstar Geographics, CNES/Airbus DS, USDA, USGS, AEX, Getmapping, Aerogrid, IGN, IGP, swisstopo, and the GIS User Community



Source: Esri, DigitalGlobe, GeoEye, Earthstar Geographics, CNES/Airbus DS, USDA, USGS, AEX, Getmapping, Aerogrid, IGN, IGP, swisstopo, and the GIS User Community



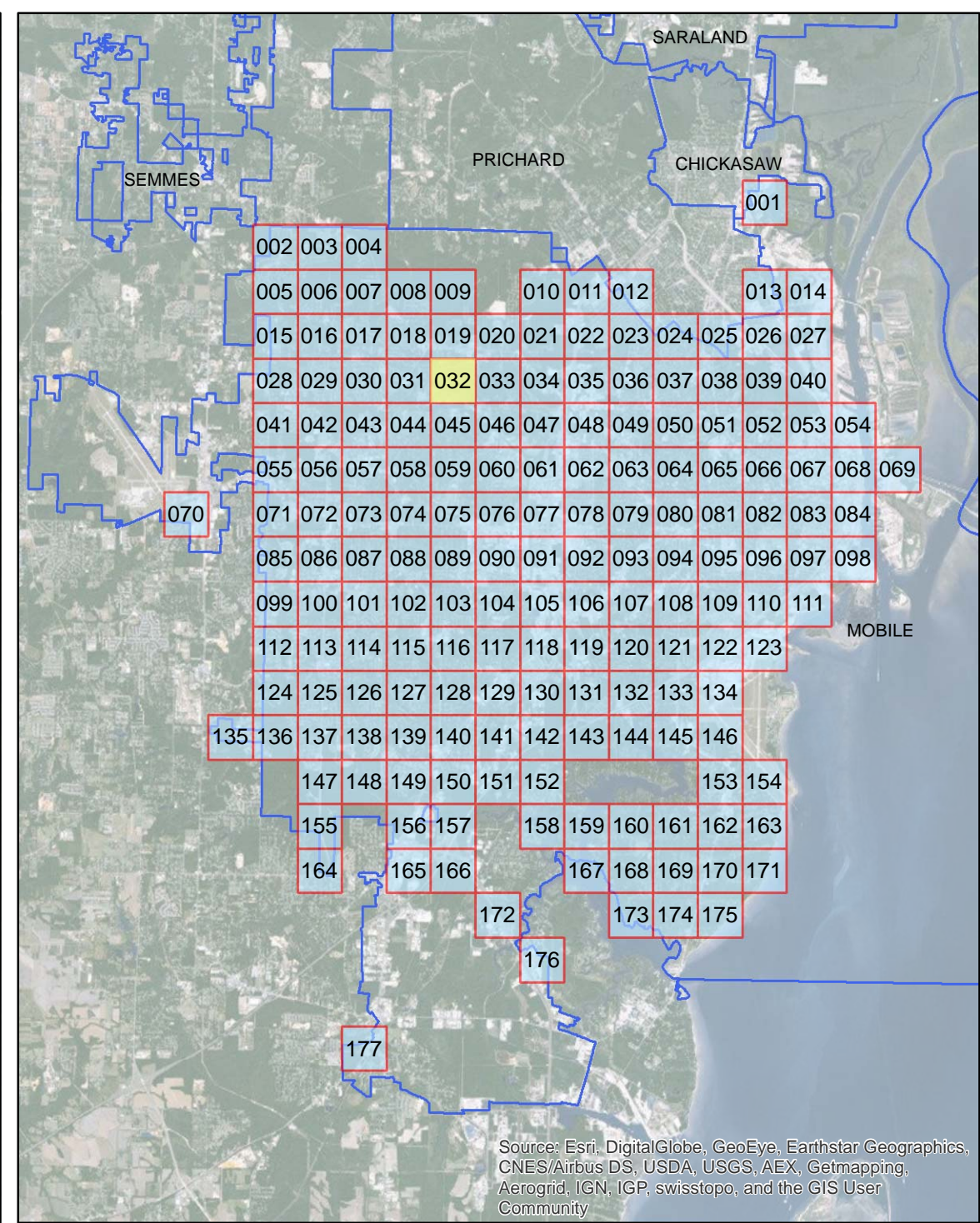
ADA Transition Plan City of Mobile

- Legend**
- Layer**
- Sidewalk Meets Standards
 - Handicap Ramp Replacement
 - >75% Needs Replacement
 - Approximately 25% Needs Repair

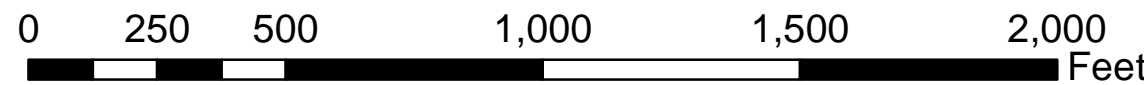




Source: Esri, DigitalGlobe, GeoEye, Earthstar Geographics, CNES/Airbus DS, USDA, USGS, AEX, Getmapping, Aerogrid, IGN, IGP, swisstopo, and the GIS User Community



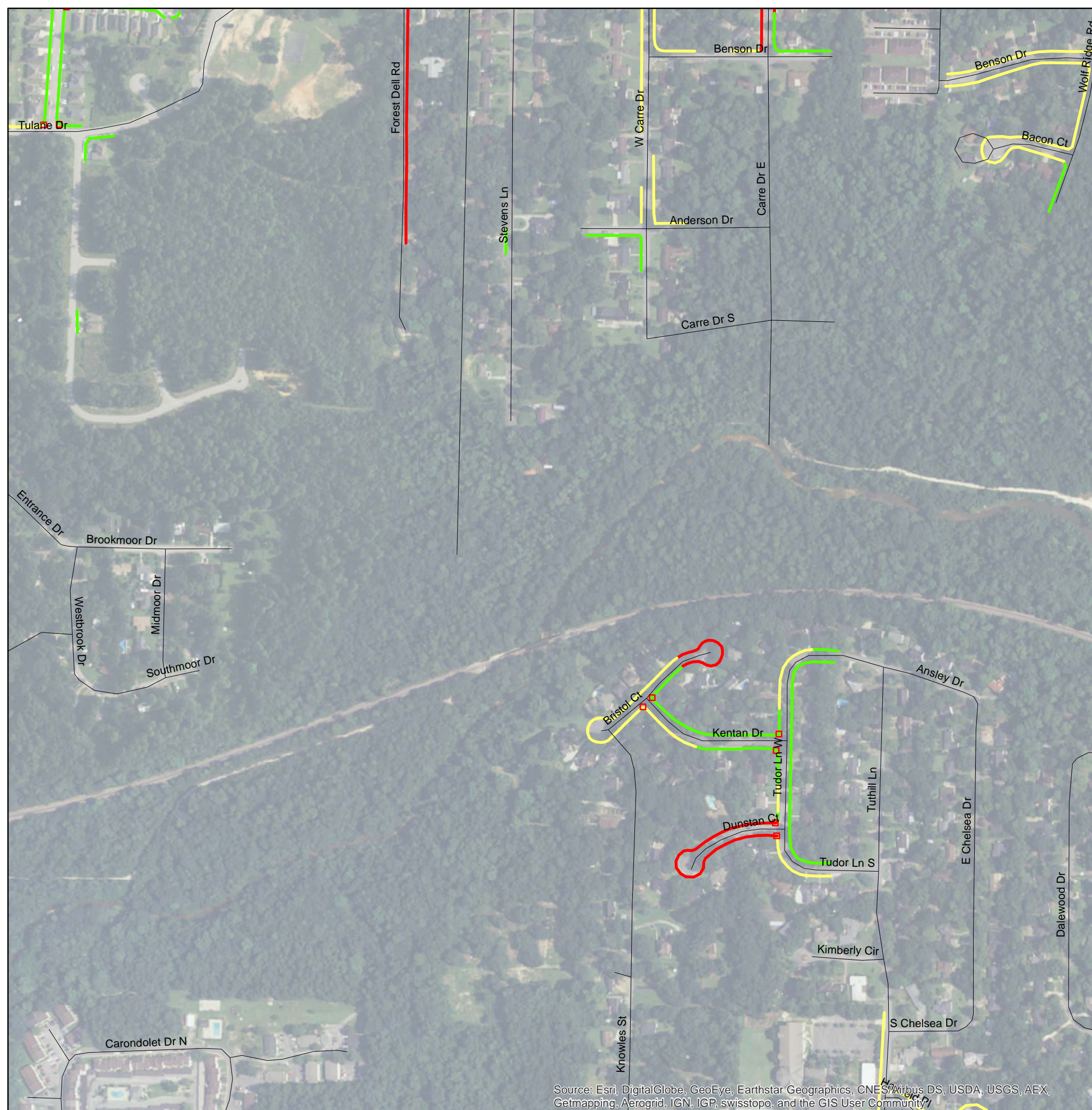
Source: Esri, DigitalGlobe, GeoEye, Earthstar Geographics, CNES/Airbus DS, USDA, USGS, AEX, Getmapping, Aerogrid, IGN, IGP, swisstopo, and the GIS User Community



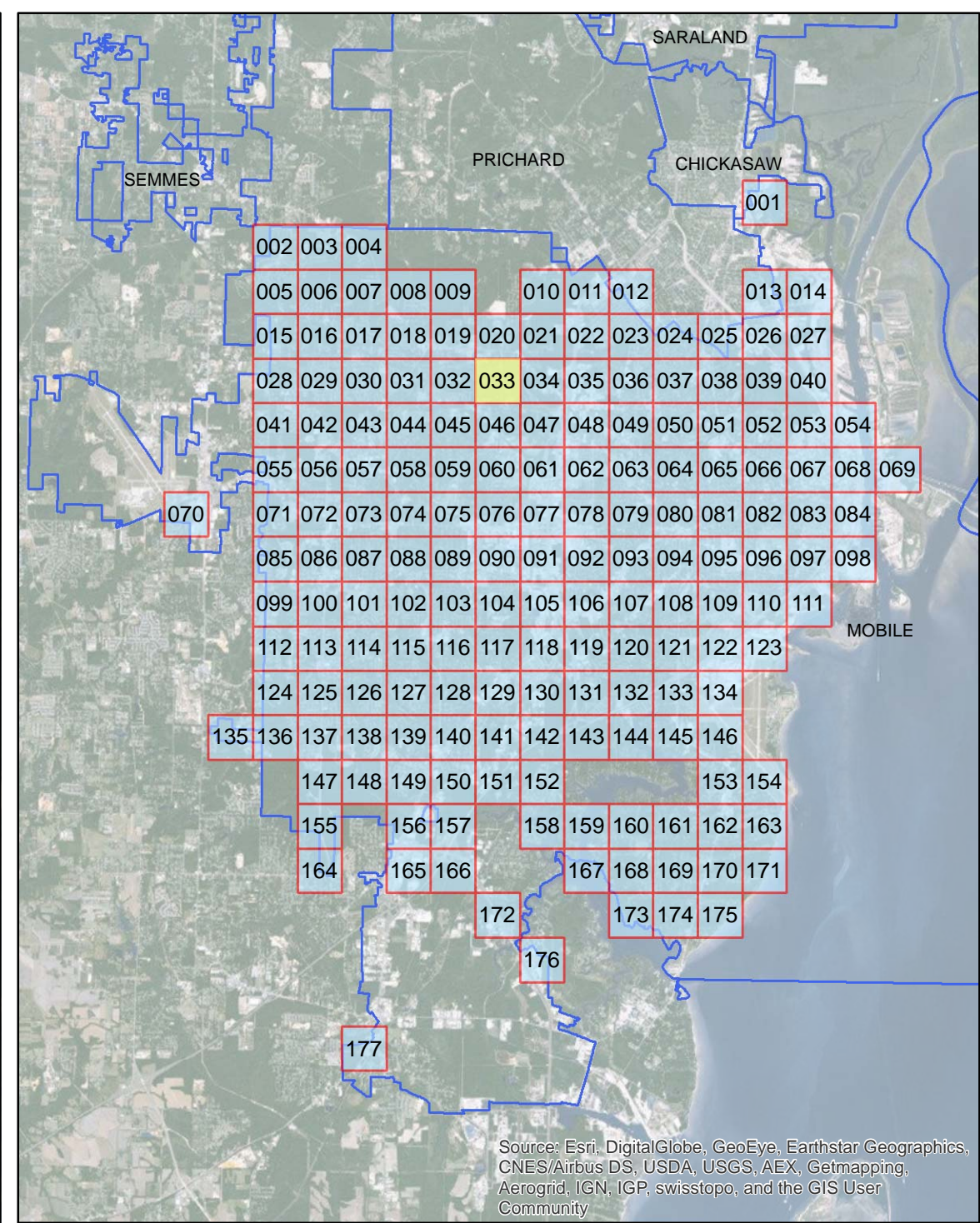
ADA Transition Plan City of Mobile

- Legend**
- Layer**
- Sidewalk Meets Standards
 - Handicap Ramp Replacement
 - >75% Needs Replacement
 - Approximately 25% Needs Repair

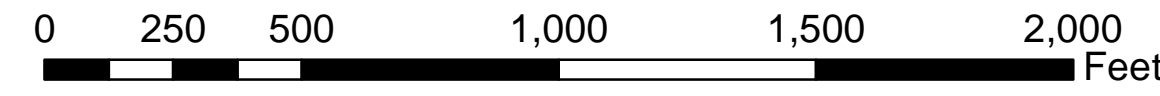




Source: Esri, DigitalGlobe, GeoEye, Earthstar Geographics, CNES/Airbus DS, USDA, USGS, AEX, Getmapping, Aerogrid, IGN, IGP, swisstopo, and the GIS User Community



Source: Esri, DigitalGlobe, GeoEye, Earthstar Geographics, CNES/Airbus DS, USDA, USGS, AEX, Getmapping, Aerogrid, IGN, IGP, swisstopo, and the GIS User Community



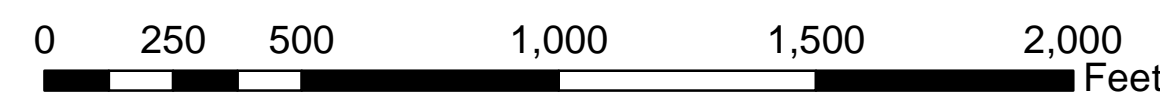
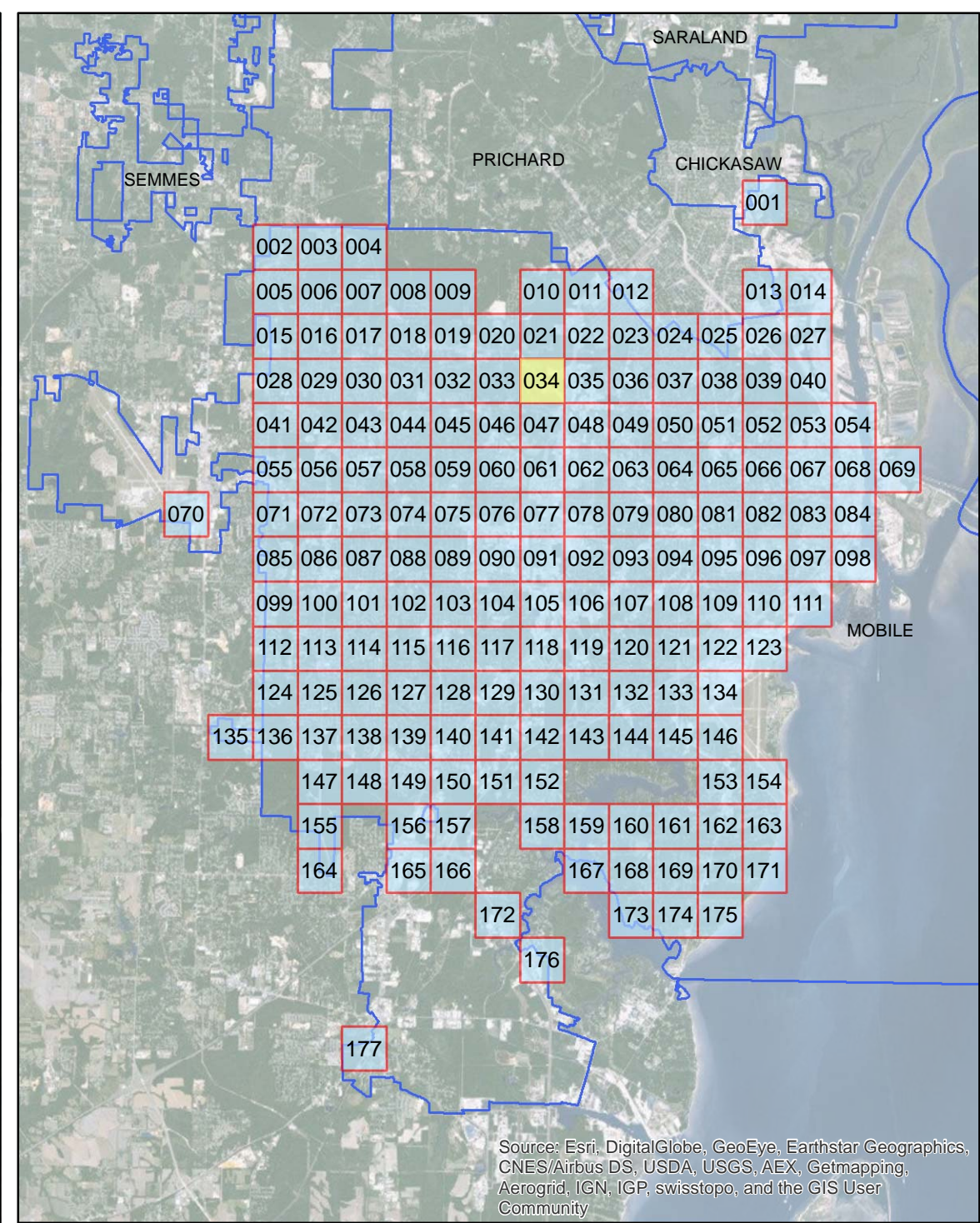
ADA Transition Plan City of Mobile

- Legend**
- Layer**
- Sidewalk Meets Standards
 - Handicap Ramp Replacement
 - >75% Needs Replacement
 - Approximately 25% Needs Repair





Source: Esri, DigitalGlobe, GeoEye, Earthstar Geographics, CNES/Airbus DS, USDA, USGS, AEX, Getmapping, Aerogrid, IGN, IGP, swisstopo, and the GIS User Community



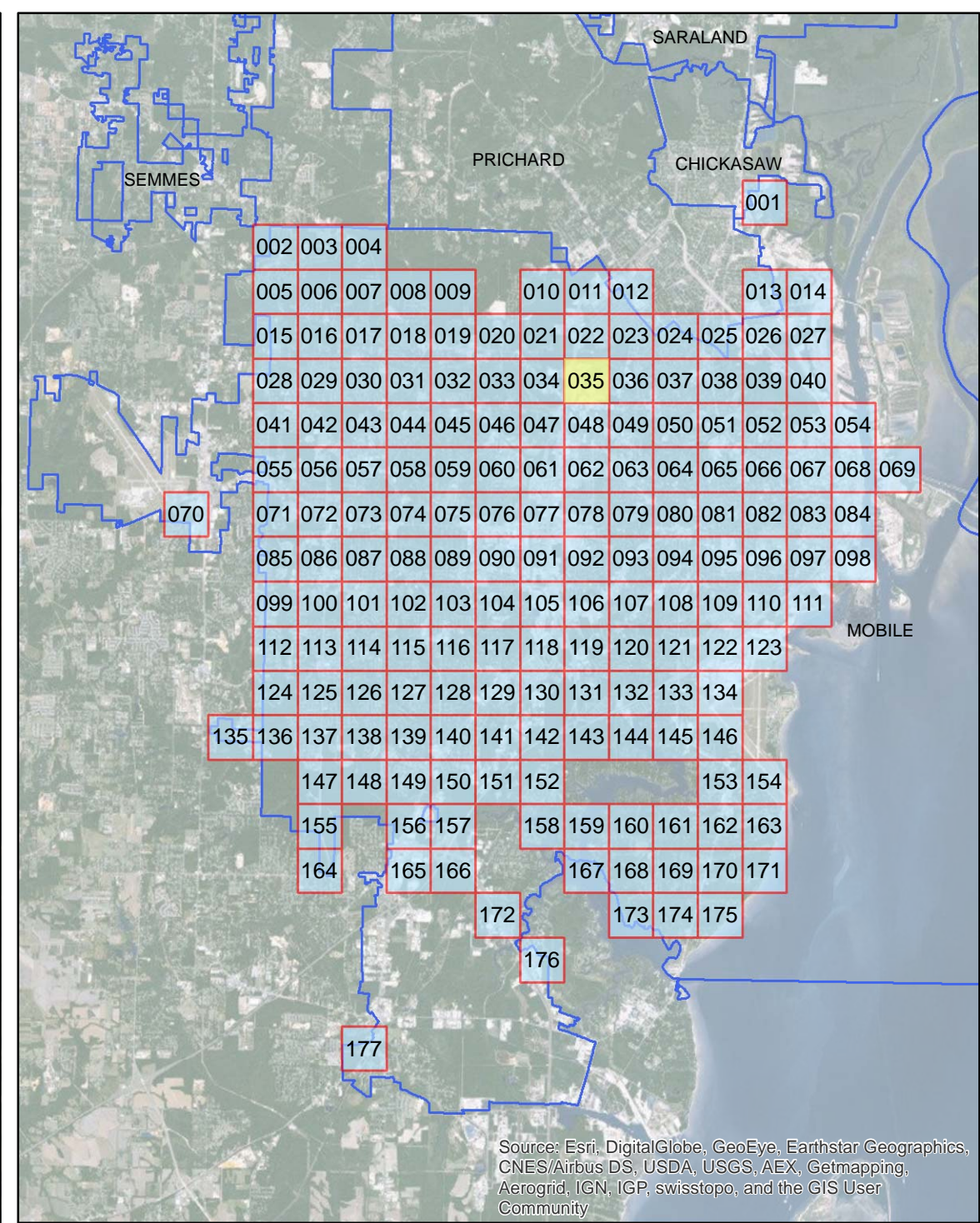
ADA Transition Plan City of Mobile

- Legend**
- Layer**
- Sidewalk Meets Standards
 - Handicap Ramp Replacement
 - >75% Needs Replacement
 - Approximately 25% Needs Repair





Source: Esri, DigitalGlobe, GeoEye, Earthstar Geographics, CNES/Airbus DS, USDA, USGS, AEX, Getmapping, Aerogrid, IGN, IGP, swisstopo, and the GIS User Community



Source: Esri, DigitalGlobe, GeoEye, Earthstar Geographics, CNES/Airbus DS, USDA, USGS, AEX, Getmapping, Aerogrid, IGN, IGP, swisstopo, and the GIS User Community

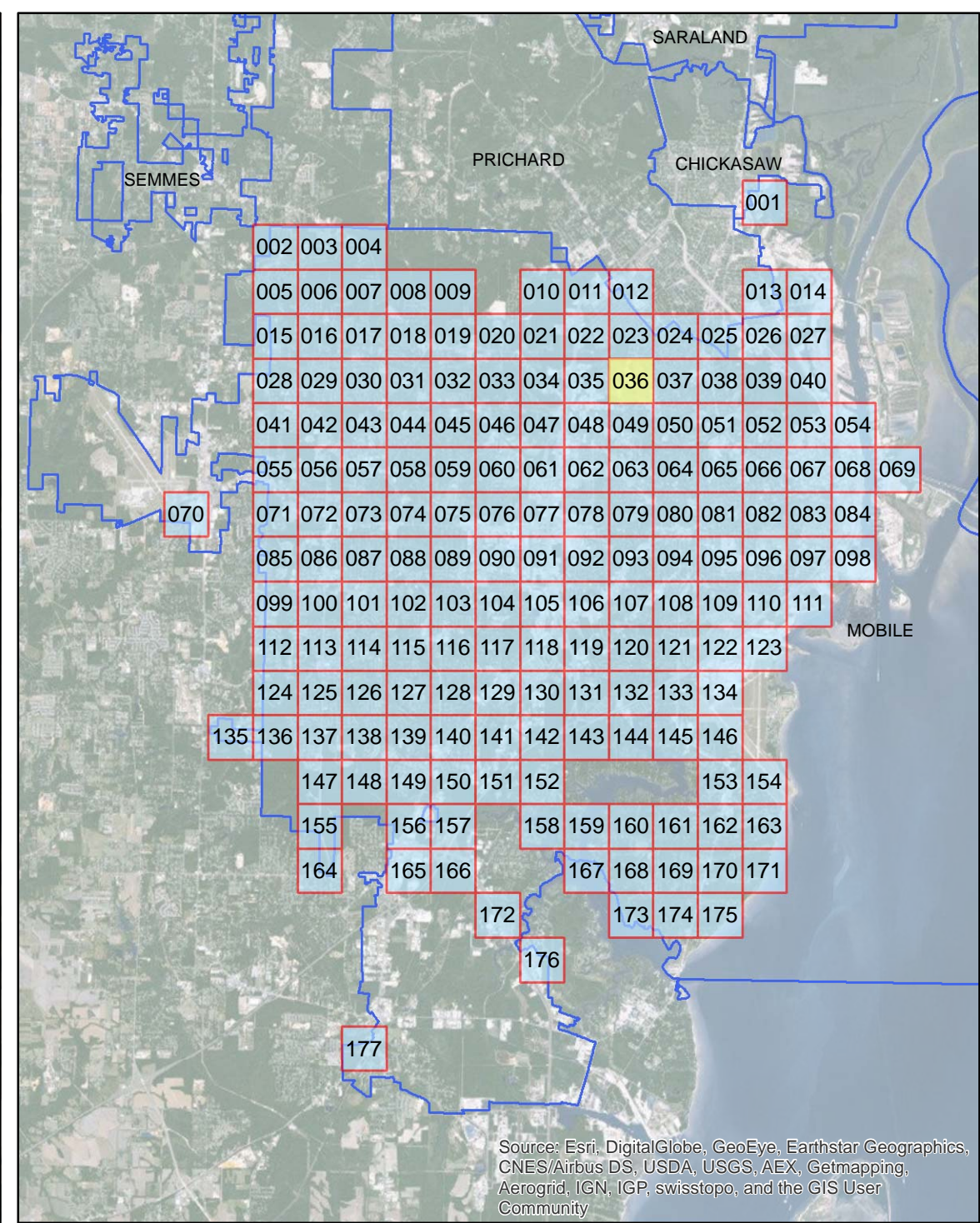
ADA Transition Plan City of Mobile

- Legend**
- Layer**
- Sidewalk Meets Standards
 - Handicap Ramp Replacement
 - >75% Needs Replacement
 - Approximately 25% Needs Repair

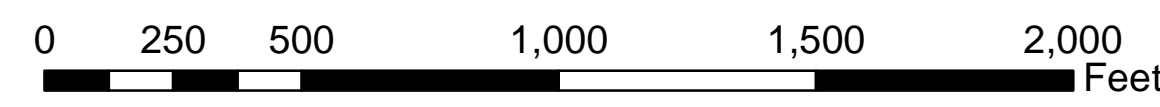




Source: Esri, DigitalGlobe, GeoEye, Earthstar Geographics, CNES/Airbus DS, USDA, USGS, AEX, Getmapping, Aerogrid, IGN, IGP, swisstopo, and the GIS User Community



Source: Esri, DigitalGlobe, GeoEye, Earthstar Geographics, CNES/Airbus DS, USDA, USGS, AEX, Getmapping, Aerogrid, IGN, IGP, swisstopo, and the GIS User Community



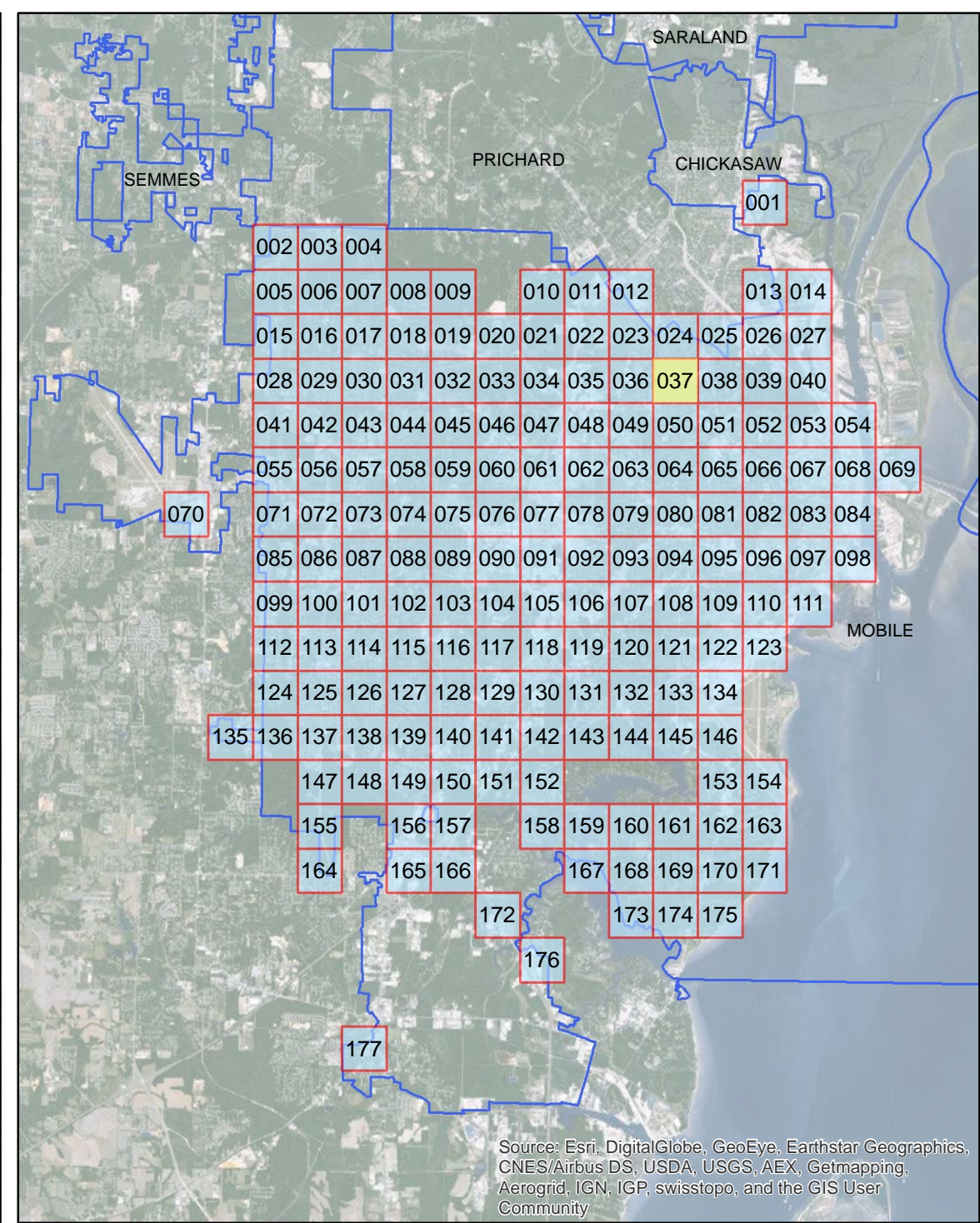
ADA Transition Plan City of Mobile

- Legend**
- Layer**
- Sidewalk Meets Standards
 - Handicap Ramp Replacement
 - >75% Needs Replacement
 - Approximately 25% Needs Repair

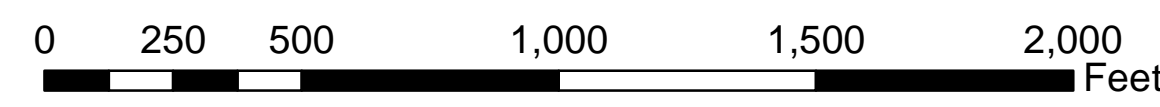




Source: Esri, DigitalGlobe, GeoEye, Earthstar Geographics, CNES/Airbus DS, USDA, USGS, AEX, Getmapping, Aerogrid, IGN, IGP, swisstopo, and the GIS User Community



Source: Esri, DigitalGlobe, GeoEye, Earthstar Geographics, CNES/Airbus DS, USDA, USGS, AEX, Getmapping, Aerogrid, IGN, IGP, swisstopo, and the GIS User Community



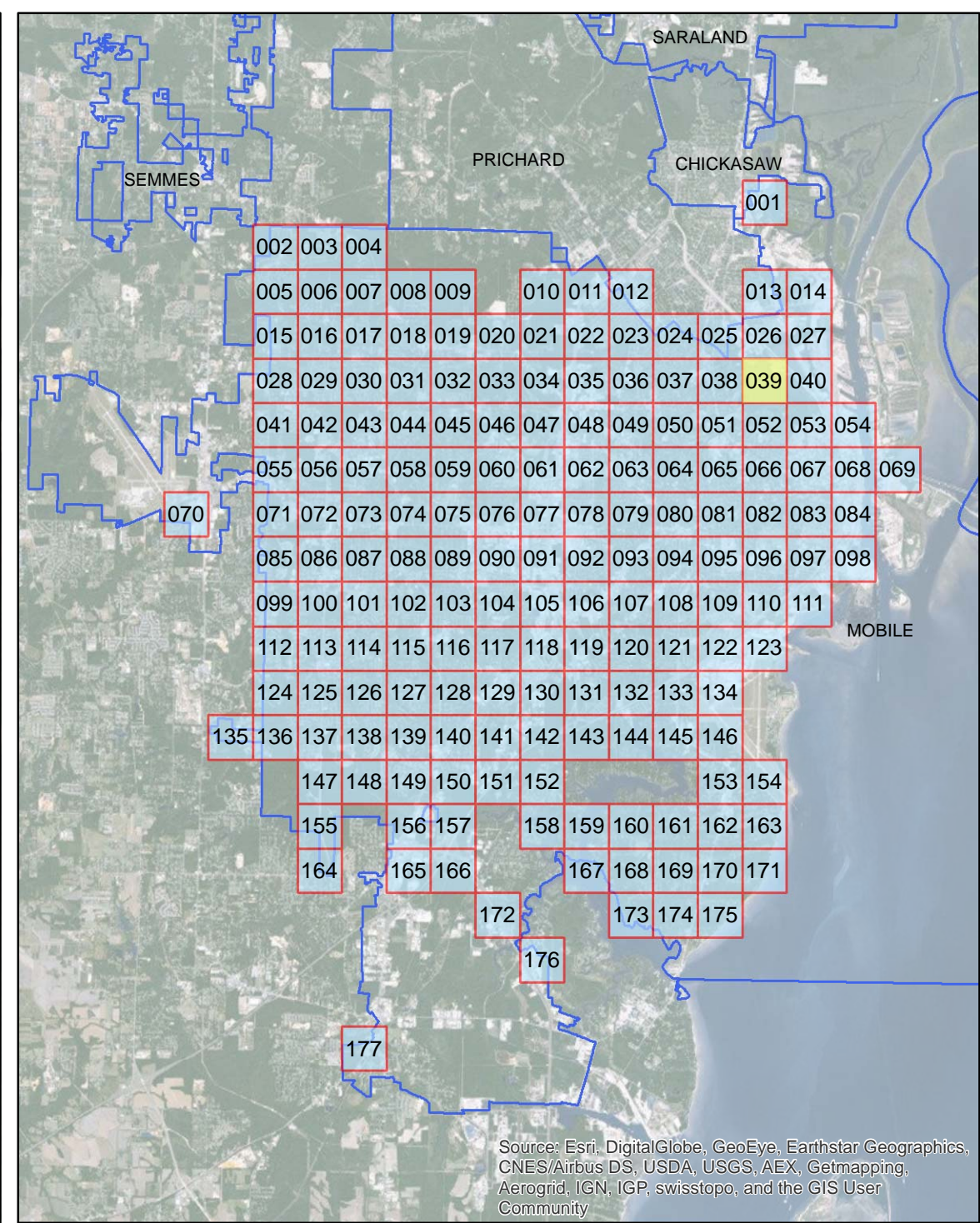
ADA Transition Plan City of Mobile

- Legend**
- Layer**
- Sidewalk Meets Standards
 - Handicap Ramp Replacement
 - >75% Needs Replacement
 - Approximately 25% Needs Repair

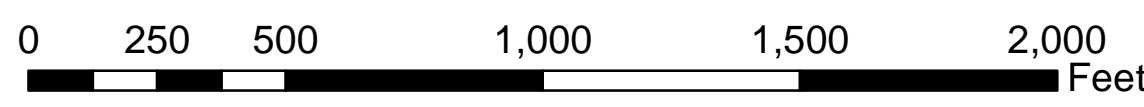




Source: Esri, DigitalGlobe, GeoEye, Earthstar Geographics, CNES/Airbus DS, USDA, USGS, AEX, Getmapping, Aerogrid, IGN, IGP, swisstopo, and the GIS User Community



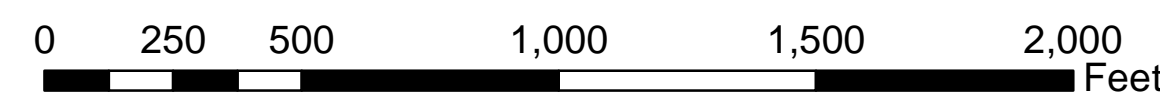
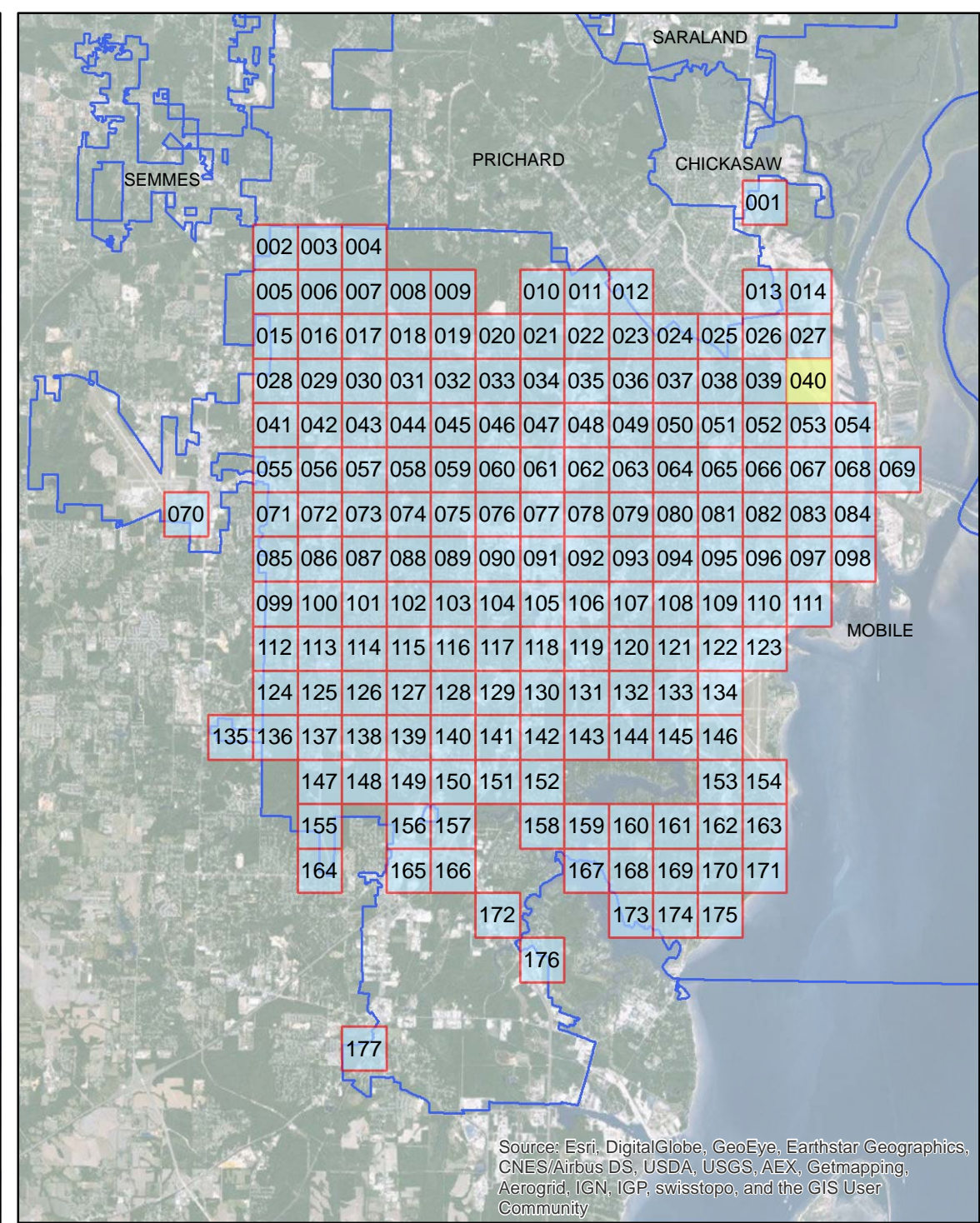
Source: Esri, DigitalGlobe, GeoEye, Earthstar Geographics, CNES/Airbus DS, USDA, USGS, AEX, Getmapping, Aerogrid, IGN, IGP, swisstopo, and the GIS User Community



ADA Transition Plan City of Mobile

- Legend**
- Layer**
- Sidewalk Meets Standards
 - Handicap Ramp Replacement
 - >75% Needs Replacement
 - Approximately 25% Needs Repair





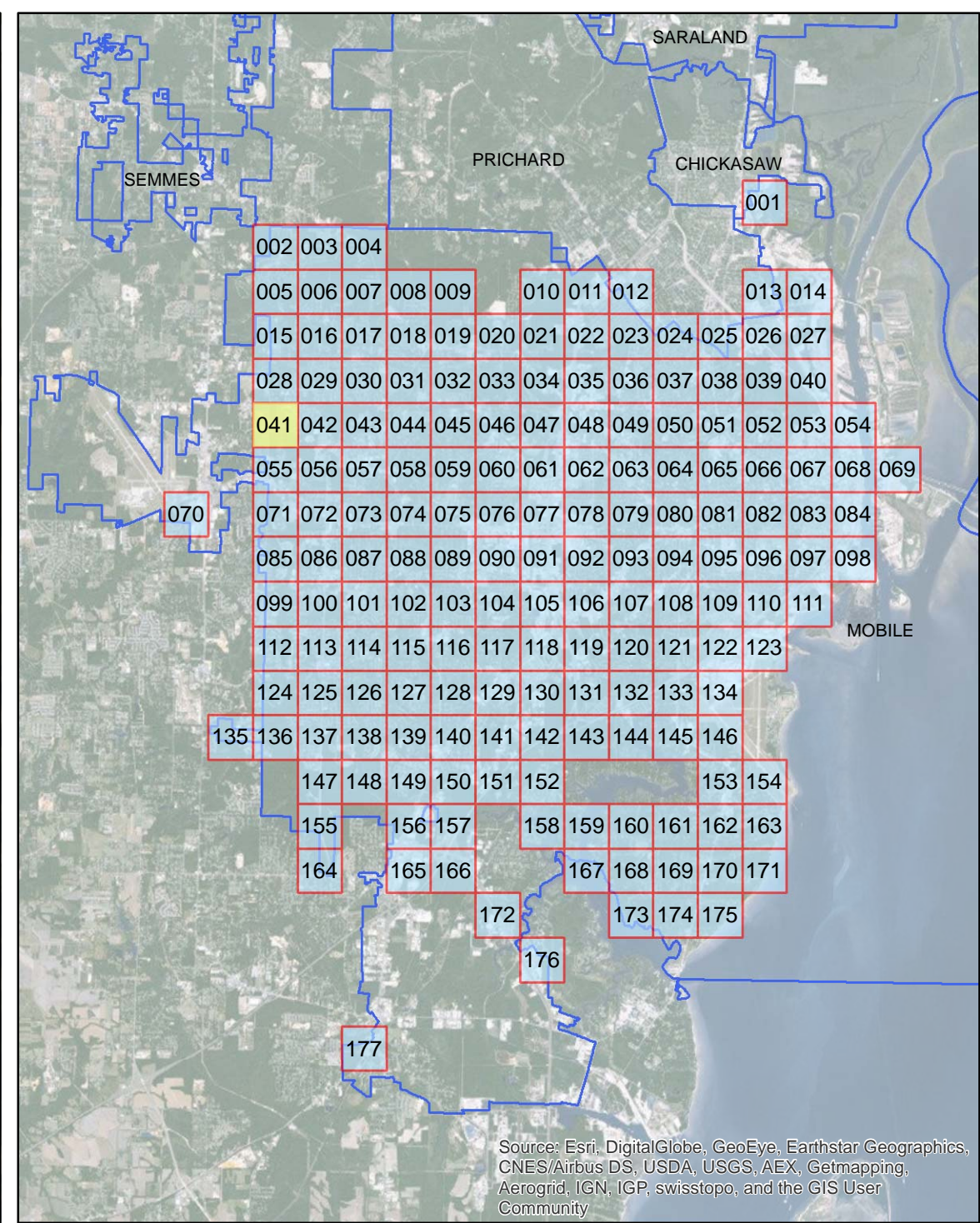
ADA Transition Plan City of Mobile

- Legend**
- Layer**
- Sidewalk Meets Standards
 - Handicap Ramp Replacement
 - >75% Needs Replacement
 - Approximately 25% Needs Repair

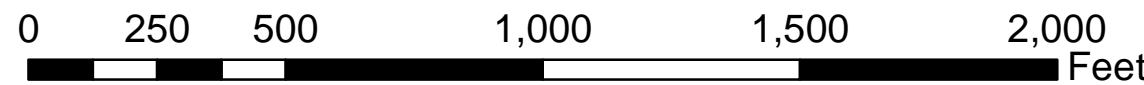




Source: Esri, DigitalGlobe, GeoEye, Earthstar Geographics, CNES/Airbus DS, USDA, USGS, AEX, Getmapping, Aerogrid, IGN, IGP, swisstopo, and the GIS User Community



Source: Esri, DigitalGlobe, GeoEye, Earthstar Geographics, CNES/Airbus DS, USDA, USGS, AEX, Getmapping, Aerogrid, IGN, IGP, swisstopo, and the GIS User Community



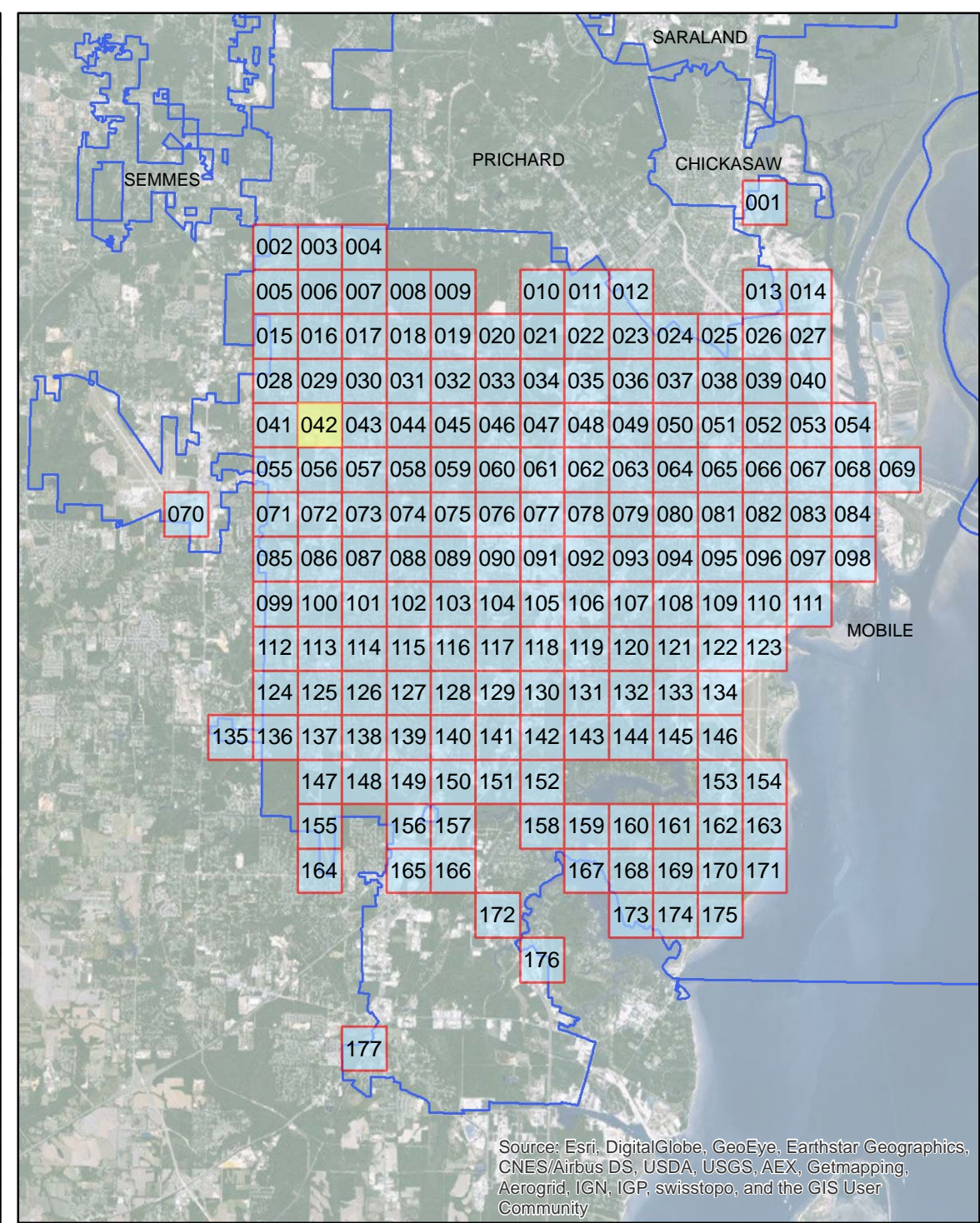
ADA Transition Plan City of Mobile

- Legend**
- Layer**
- Sidewalk Meets Standards
 - Handicap Ramp Replacement
 - >75% Needs Replacement
 - Approximately 25% Needs Repair

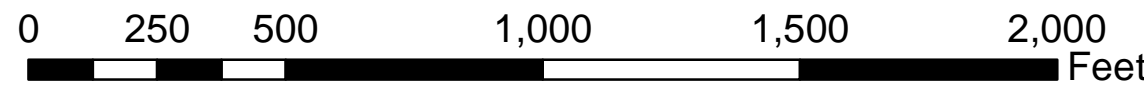




Source: Esri, DigitalGlobe, GeoEye, Earthstar Geographics, CNES/Airbus DS, USDA, USGS, AEX, Getmapping, Aerogrid, IGN, IGP, swisstopo, and the GIS User Community



Source: Esri, DigitalGlobe, GeoEye, Earthstar Geographics, CNES/Airbus DS, USDA, USGS, AEX, Getmapping, Aerogrid, IGN, IGP, swisstopo, and the GIS User Community



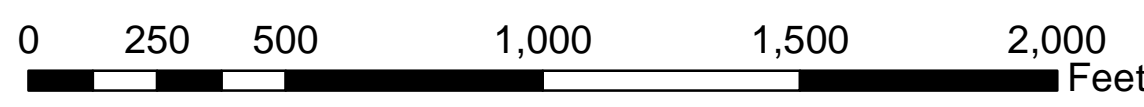
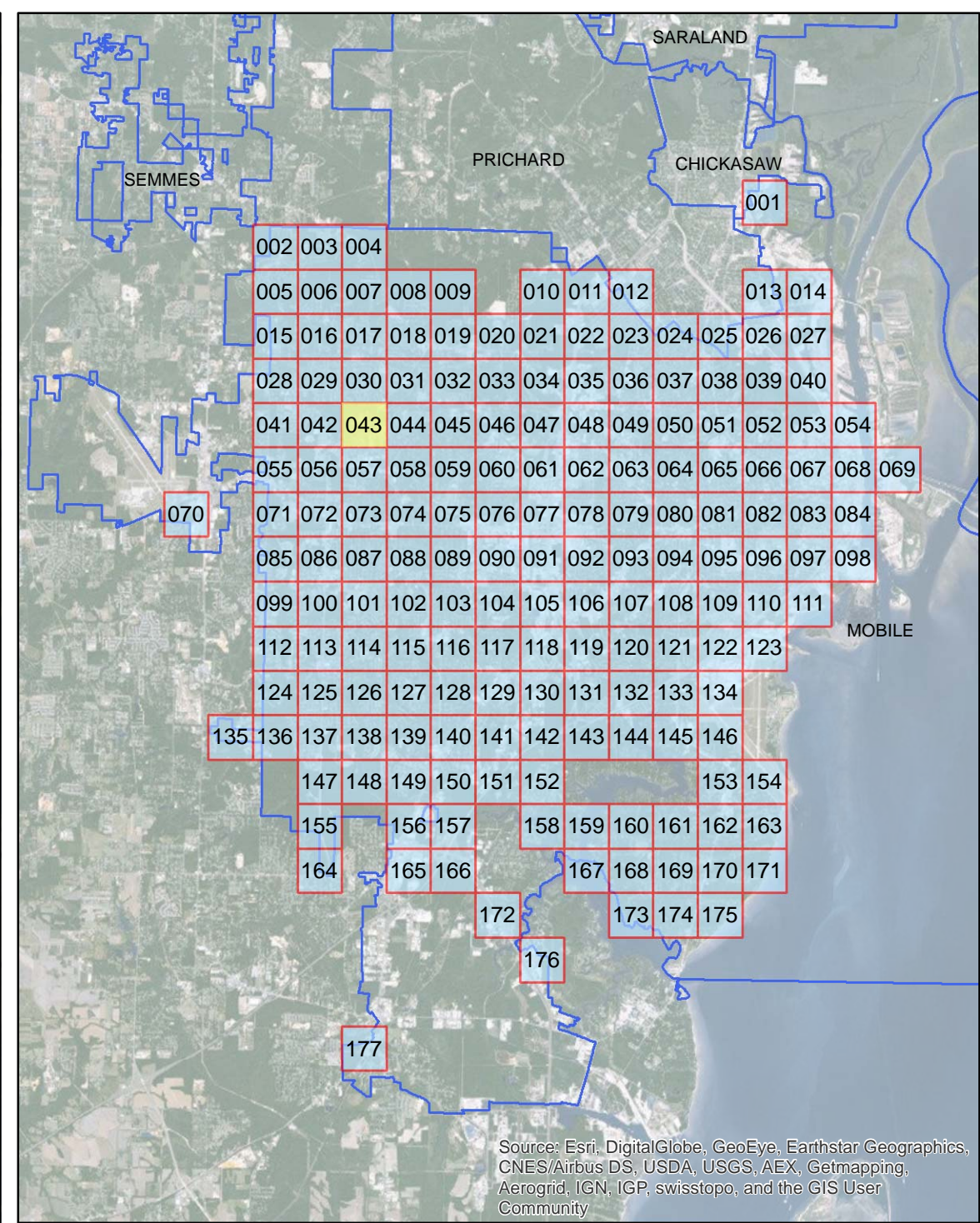
ADA Transition Plan City of Mobile

- Legend**
- Layer**
- Sidewalk Meets Standards
 - Handicap Ramp Replacement
 - >75% Needs Replacement
 - Approximately 25% Needs Repair





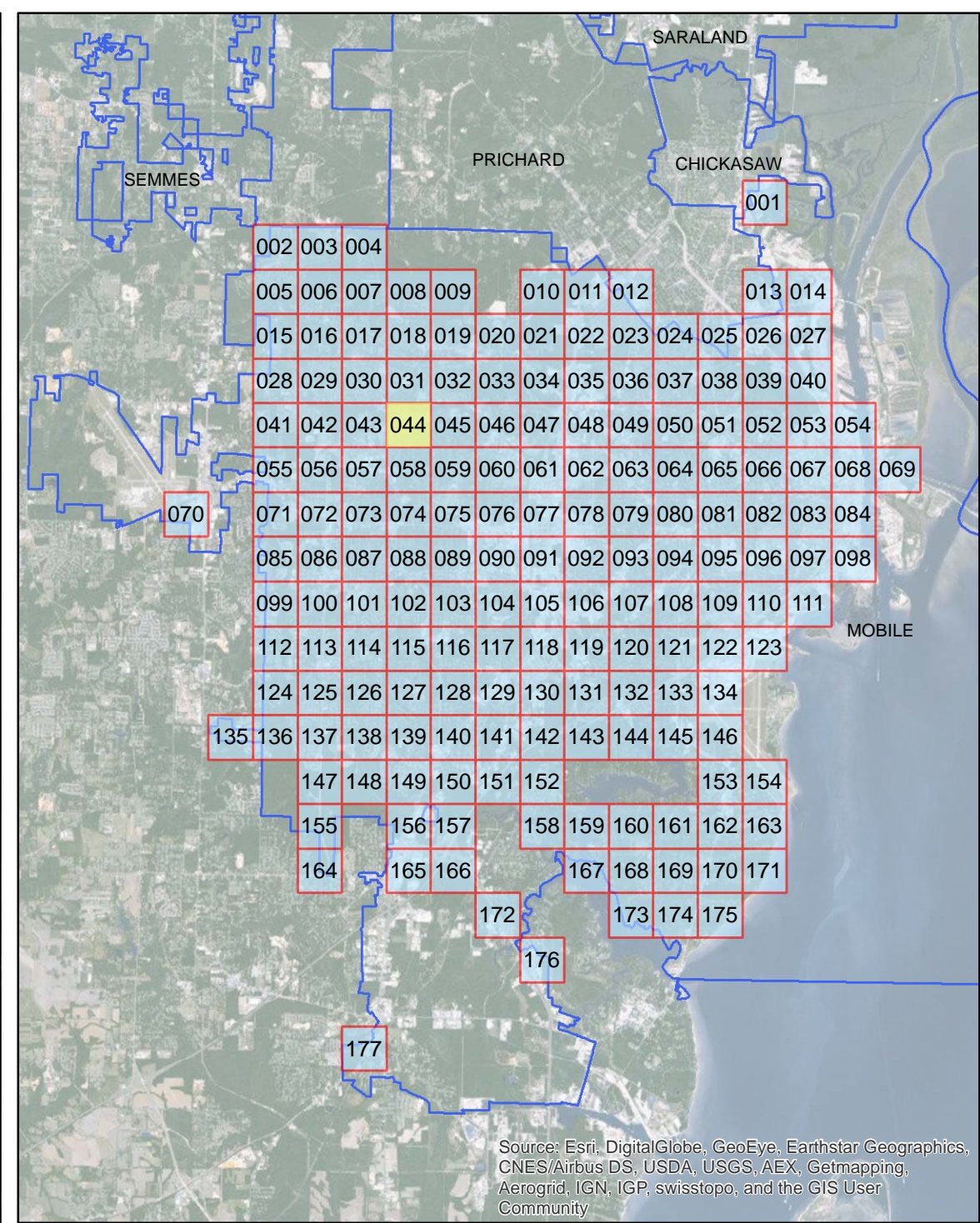
Source: Esri, DigitalGlobe, GeoEye, Earthstar Geographics, CNES/Airbus DS, USDA, USGS, AEX, Getmapping, Aerogrid, IGN, IGP, swisstopo, and the GIS User Community



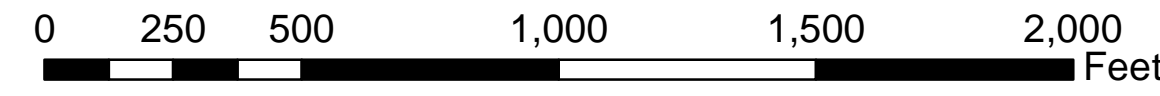
ADA Transition Plan City of Mobile

- Legend**
- Layer**
- Sidewalk Meets Standards
 - Handicap Ramp Replacement
 - >75% Needs Replacement
 - Approximately 25% Needs Repair





Source: Esri, DigitalGlobe, GeoEye, Earthstar Geographics, CNES/Airbus DS, USDA, USGS, AEX, Getmapping, Aerogrid, IGN, IGP, swisstopo, and the GIS User Community

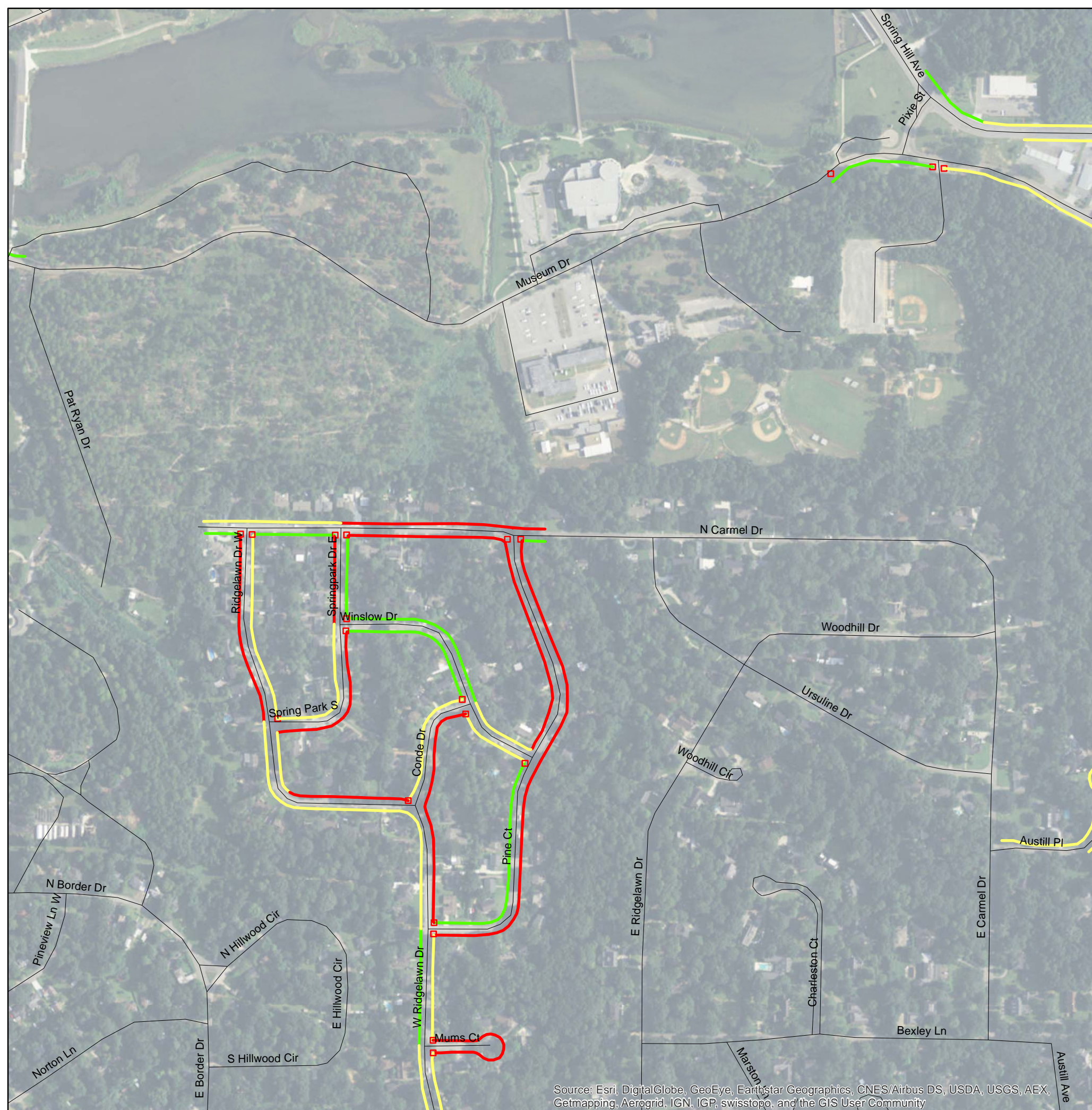


ADA Transition Plan City of Mobile

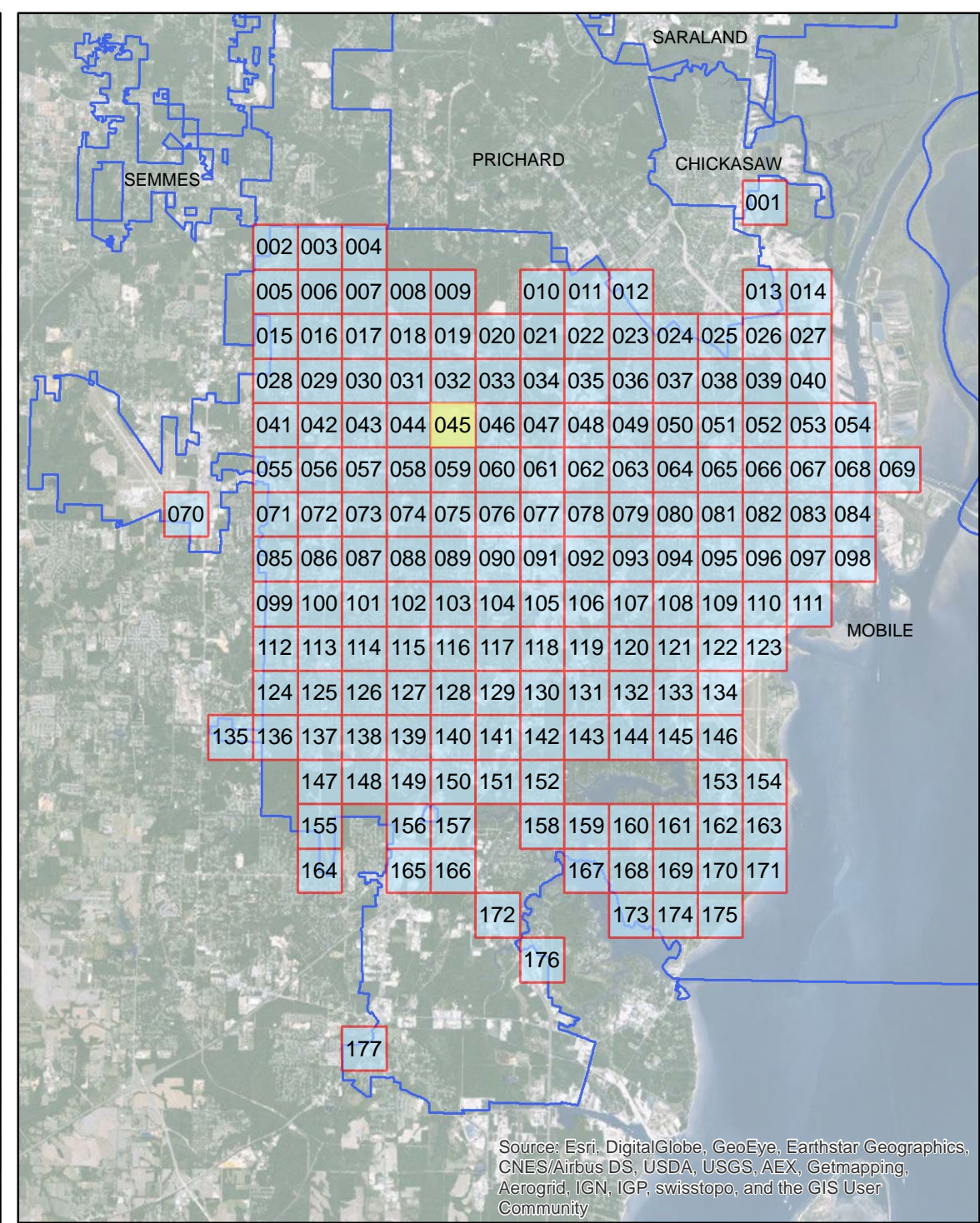
- Legend**
- Layer**
- Sidewalk Meets Standards
 - Handicap Ramp Replacement
 - >75% Needs Replacement
 - Approximately 25% Needs Repair



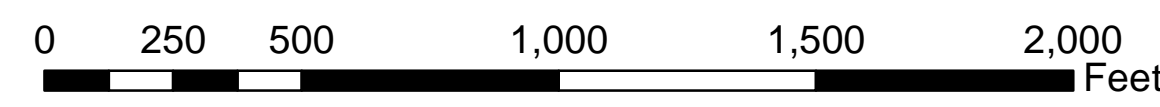
Source: Esri, DigitalGlobe, GeoEye, Earthstar Geographics, CNES/Airbus DS, USDA, USGS, AEX, Getmapping, Aerogrid, IGN, IGP, swisstopo, and the GIS User Community



Source: Esri, DigitalGlobe, GeoEye, Earthstar Geographics, CNES/Airbus DS, USDA, USGS, AEX, Getmapping, Aerogrid, IGN, IGP, swisstopo, and the GIS User Community



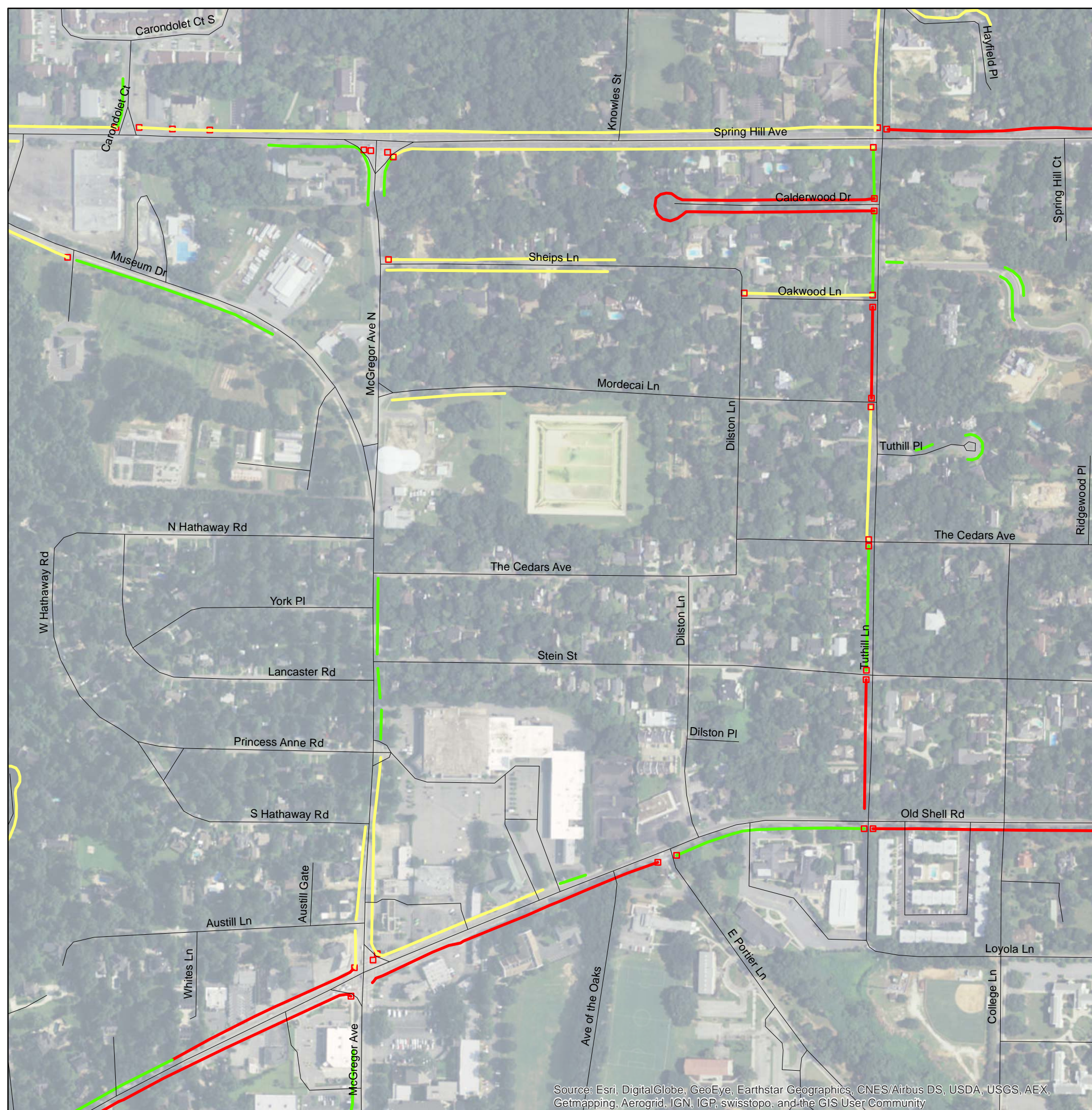
Source: Esri, DigitalGlobe, GeoEye, Earthstar Geographics, CNES/Airbus DS, USDA, USGS, AEX, Getmapping, Aerogrid, IGN, IGP, swisstopo, and the GIS User Community



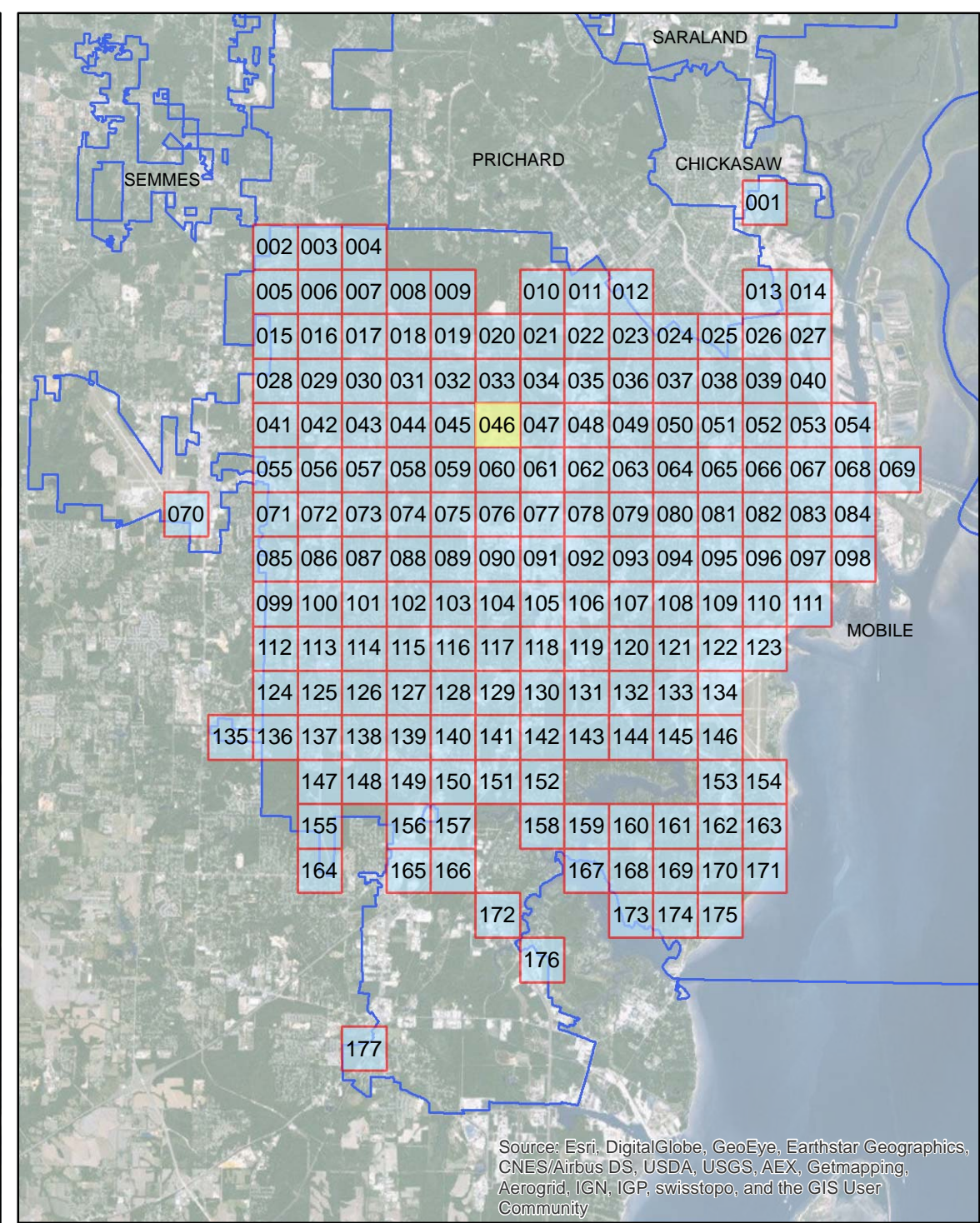
ADA Transition Plan City of Mobile

- Legend**
- Layer**
- Sidewalk Meets Standards
 - Handicap Ramp Replacement
 - >75% Needs Replacement
 - Approximately 25% Needs Repair

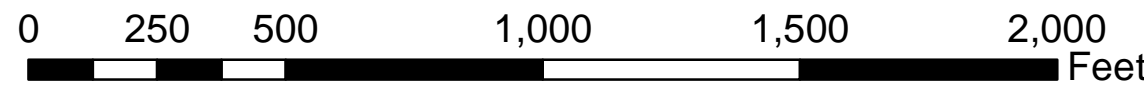




Source: Esri, DigitalGlobe, GeoEye, Earthstar Geographics, CNES/Airbus DS, USDA, USGS, AEX, Getmapping, Aerogrid, IGN, IGP, swisstopo, and the GIS User Community



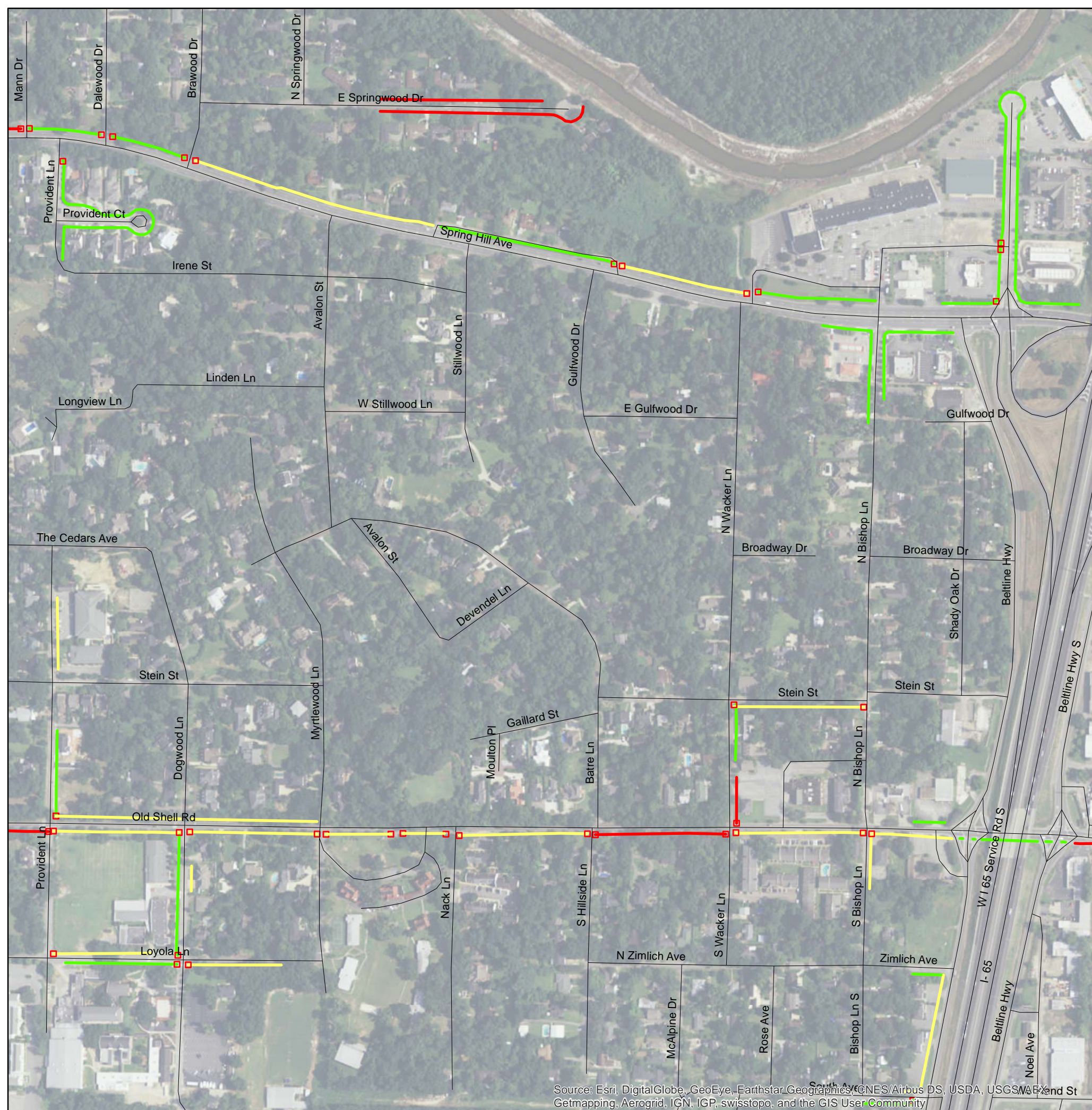
Source: Esri, DigitalGlobe, GeoEye, Earthstar Geographics, CNES/Airbus DS, USDA, USGS, AEX, Getmapping, Aerogrid, IGN, IGP, swisstopo, and the GIS User Community



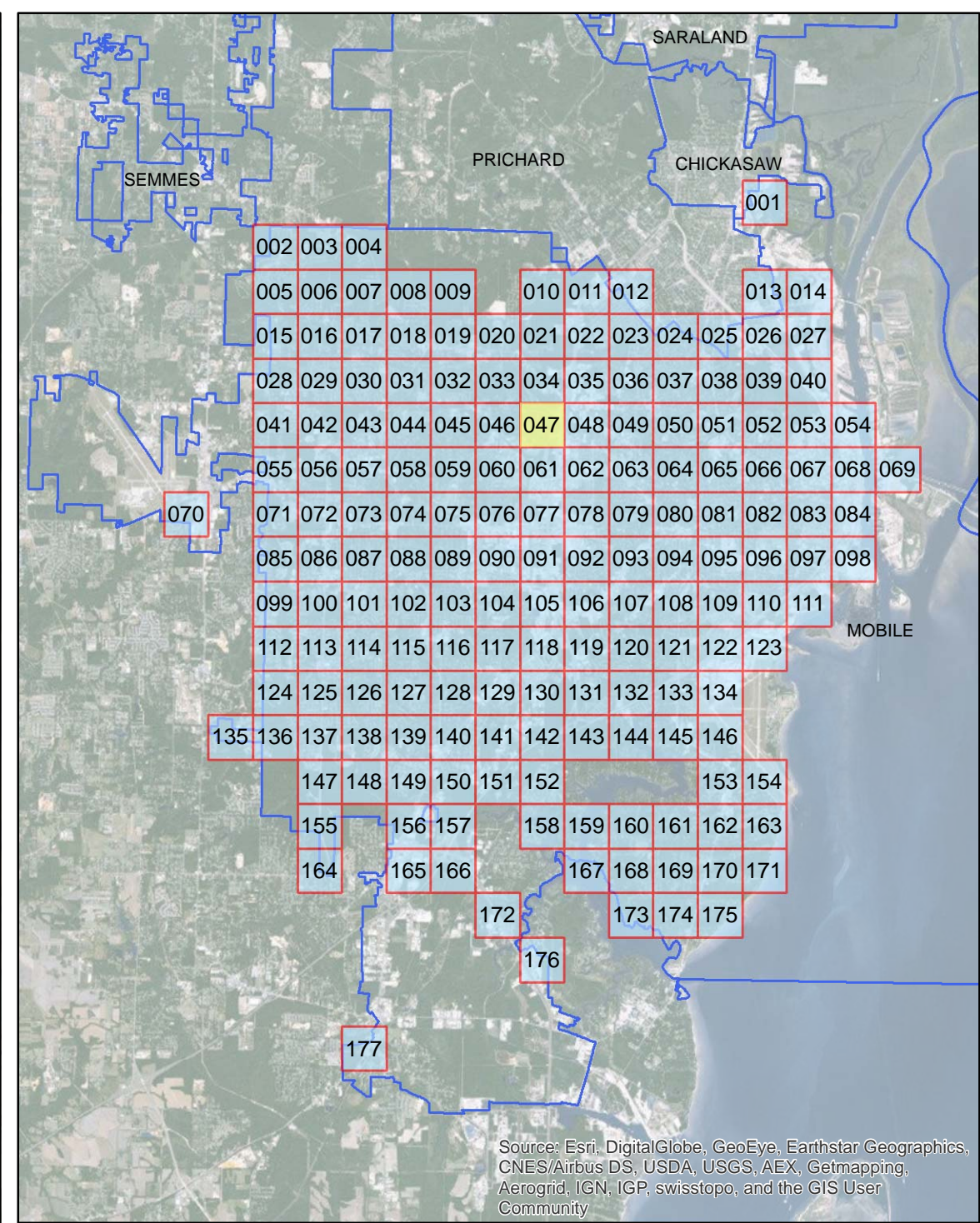
ADA Transition Plan City of Mobile

- Legend**
- Layer**
- Sidewalk Meets Standards
 - Handicap Ramp Replacement
 - >75% Needs Replacement
 - Approximately 25% Needs Repair

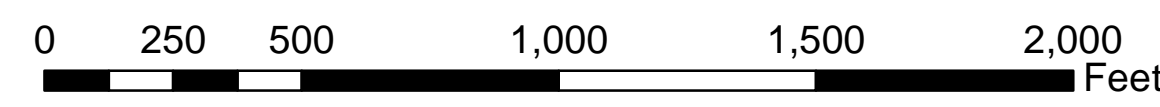




Source: Esri, DigitalGlobe, GeoEye, Earthstar Geographics, CNES/Airbus DS, USDA, USGS, AeroGRID, IGN, IGP, swisstopo, and the GIS User Community



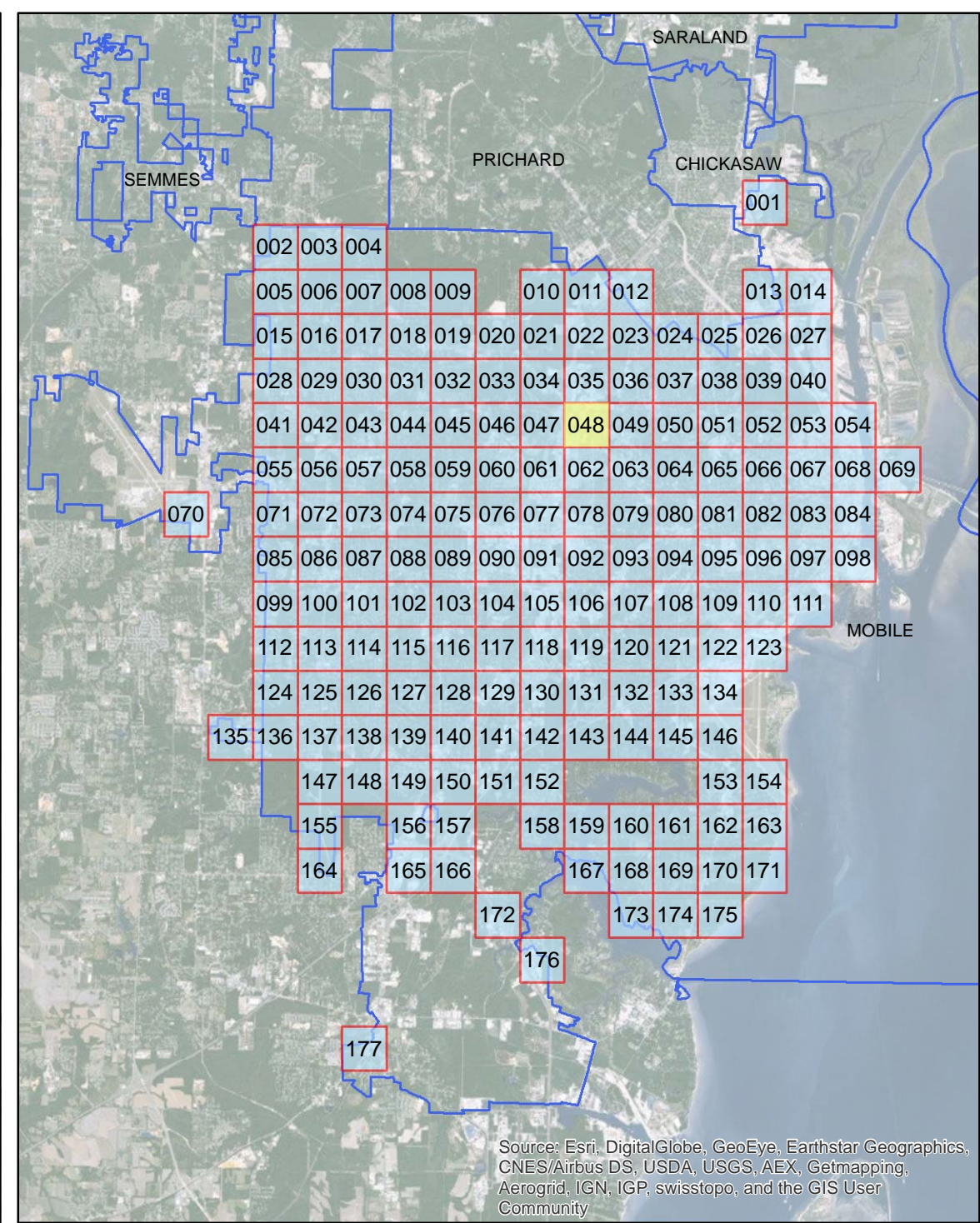
Source: Esri, DigitalGlobe, GeoEye, Earthstar Geographics, CNES/Airbus DS, USDA, USGS, AeroGRID, IGN, IGP, swisstopo, and the GIS User Community



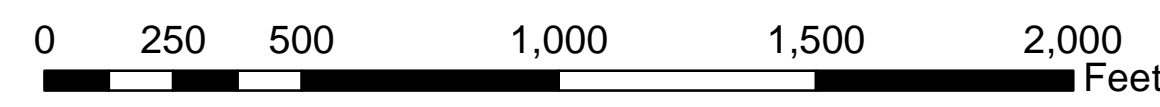
ADA Transition Plan City of Mobile

- Legend**
- Layer**
- Sidewalk Meets Standards
 - Handicap Ramp Replacement
 - >75% Needs Replacement
 - Approximately 25% Needs Repair





Source: Esri, DigitalGlobe, GeoEye, Earthstar Geographics, CNES/Airbus DS, USDA, USGS, AEX, Getmapping, Aerogrid, IGN, IGP, swisstopo, and the GIS User Community

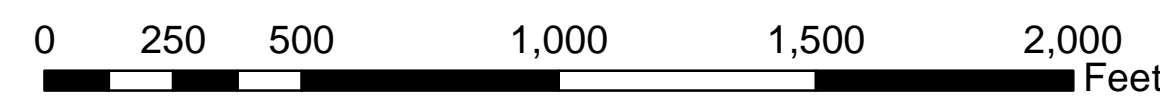
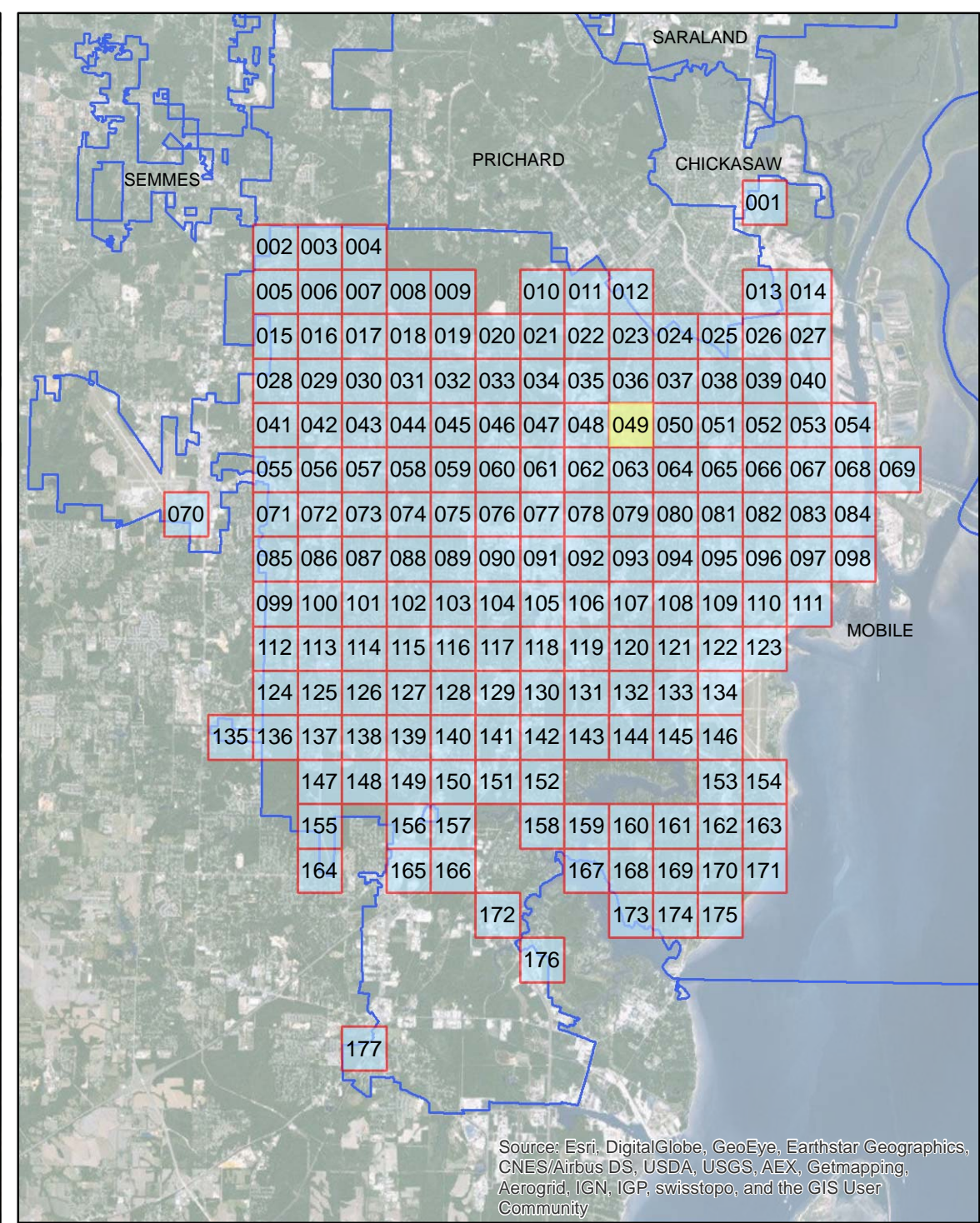
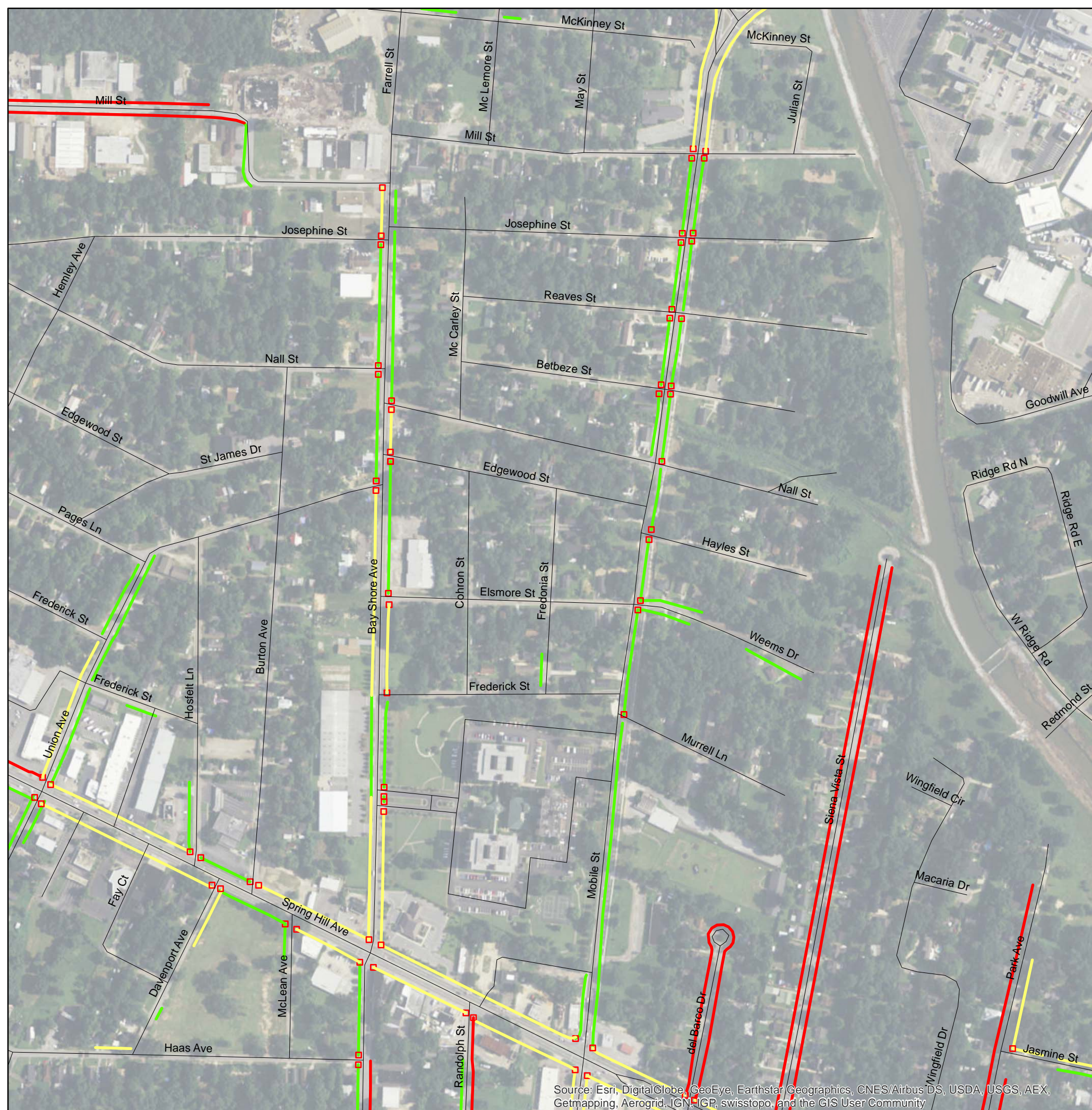


ADA Transition Plan City of Mobile

- Legend**
- Layer**
- Sidewalk Meets Standards
 - Handicap Ramp Replacement
 - >75% Needs Replacement
 - Approximately 25% Needs Repair



Source: Esri, DigitalGlobe, GeoEye, Earthstar Geographics, CNES/Airbus DS, USDA, USGS, AEX, Getmapping, Aerogrid, IGN, IGP, swisstopo, and the GIS User Community



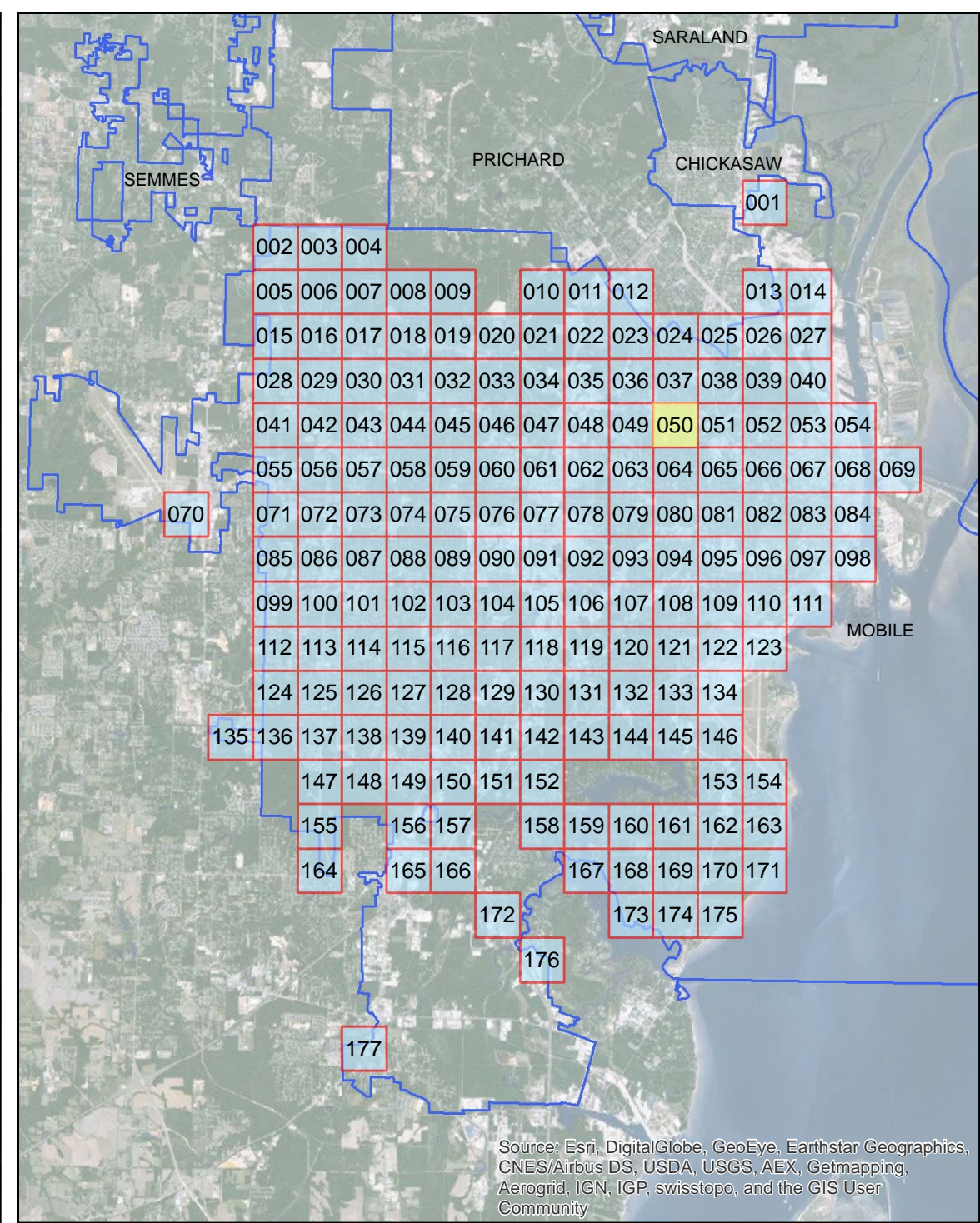
ADA Transition Plan City of Mobile

- Legend**
- Layer**
- Sidewalk Meets Standards
 - Handicap Ramp Replacement
 - >75% Needs Replacement
 - Approximately 25% Needs Repair

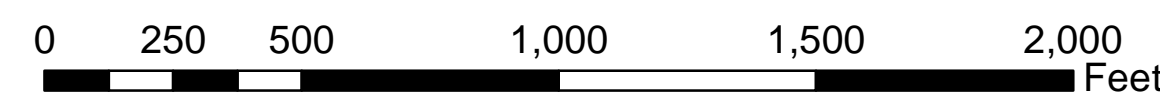




Source: Esri, DigitalGlobe, GeoEye, Earthstar Geographics, CNES/Airbus DS, USDA, USGS, AEX, Getmapping, Aerogrid, IGN, IGP, swisstopo, and the GIS User Community



Source: Esri, DigitalGlobe, GeoEye, Earthstar Geographics, CNES/Airbus DS, USDA, USGS, AEX, Getmapping, Aerogrid, IGN, IGP, swisstopo, and the GIS User Community



ADA Transition Plan City of Mobile

- Legend**
- Layer**
- Sidewalk Meets Standards
 - Handicap Ramp Replacement
 - >75% Needs Replacement
 - Approximately 25% Needs Repair

