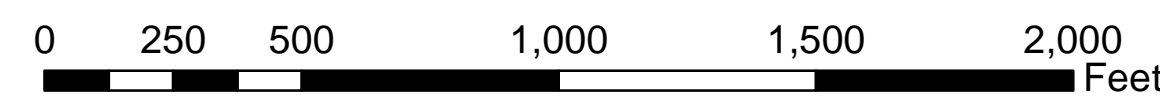
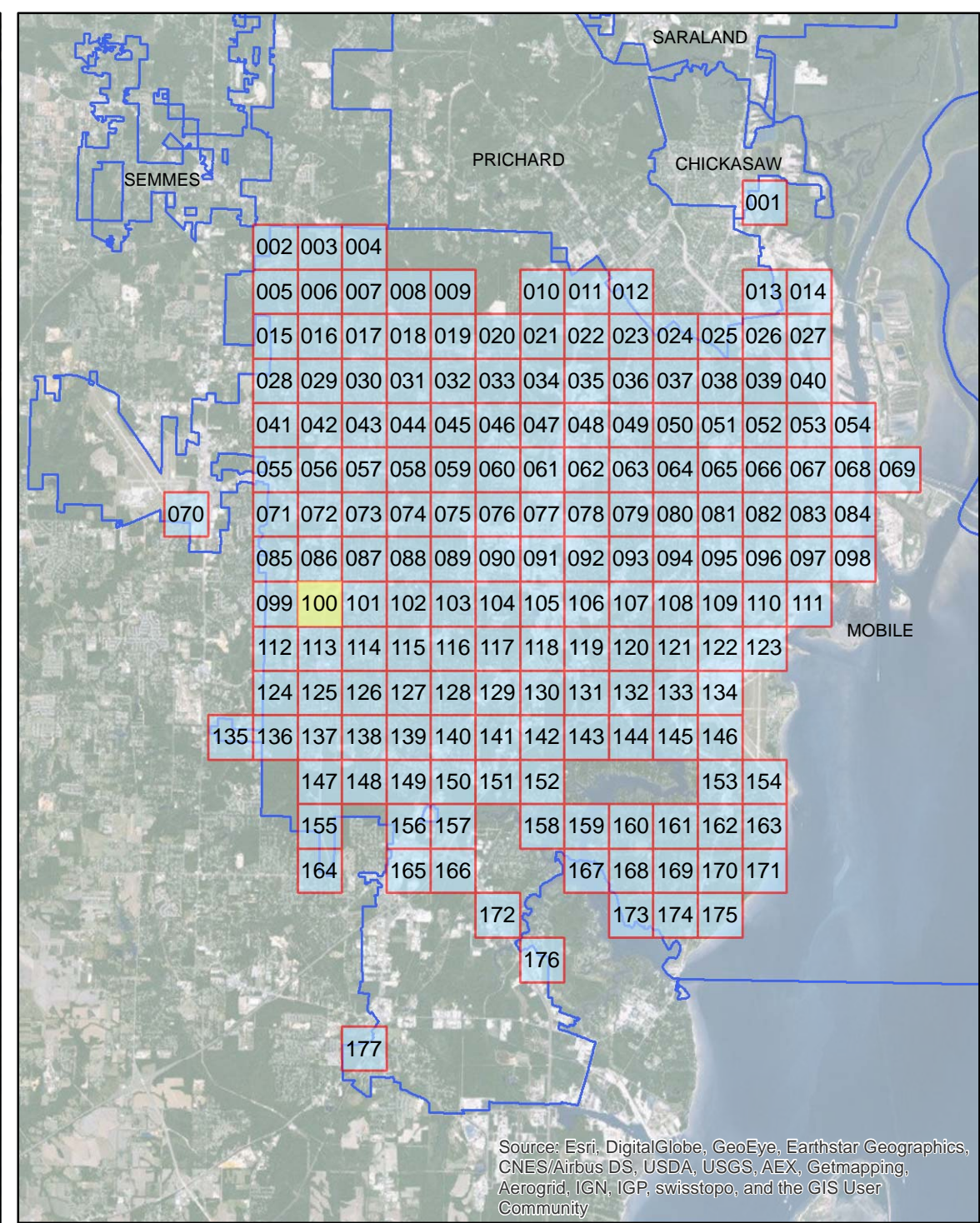


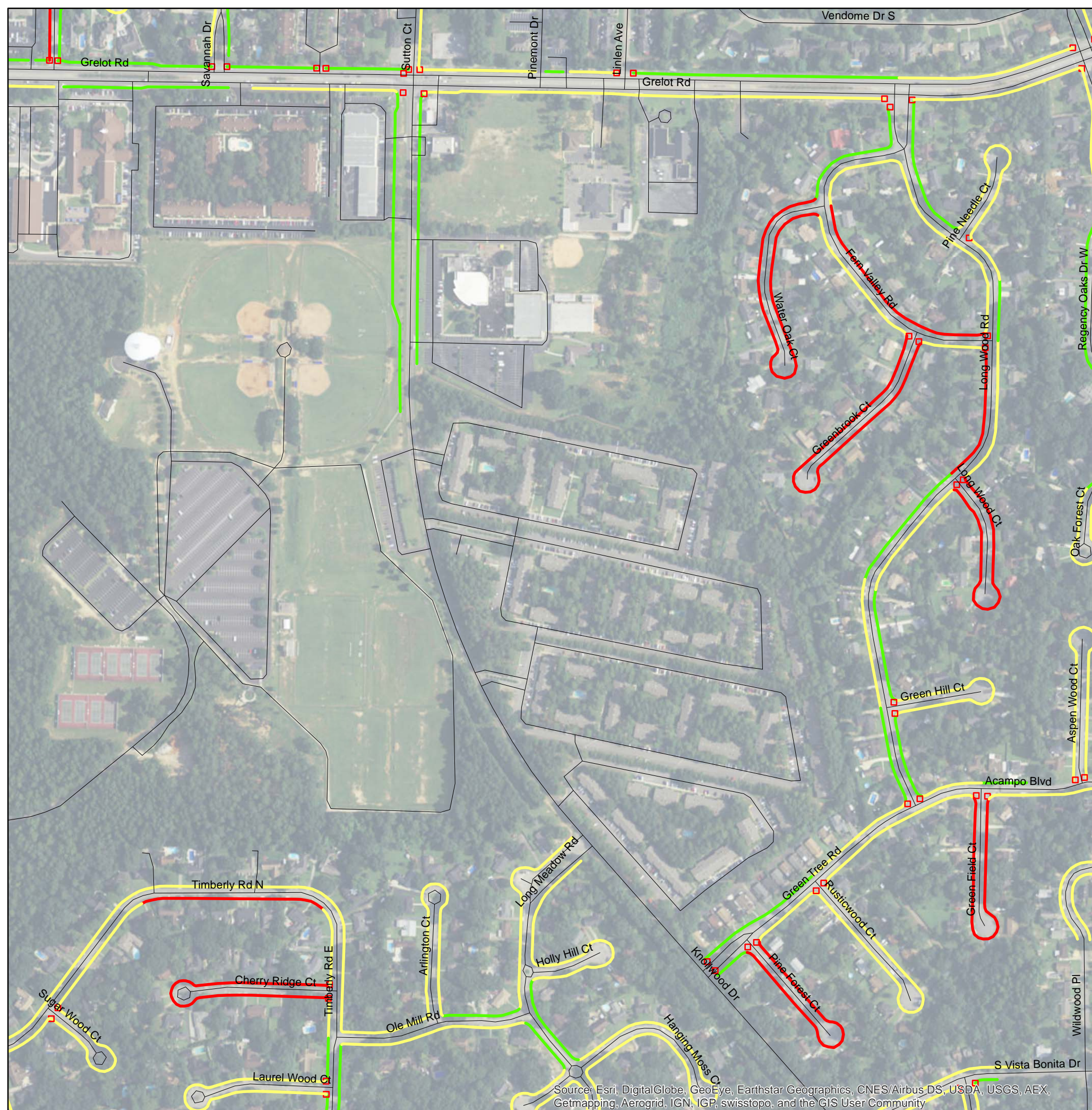
Source: Esri, DigitalGlobe, GeoEye, Earthstar Geographics, CNES/Airbus DS, USDA, USGS, AEX, Getmapping, Aerogrid, IGN, IGP, swisstopo, and the GIS User Community



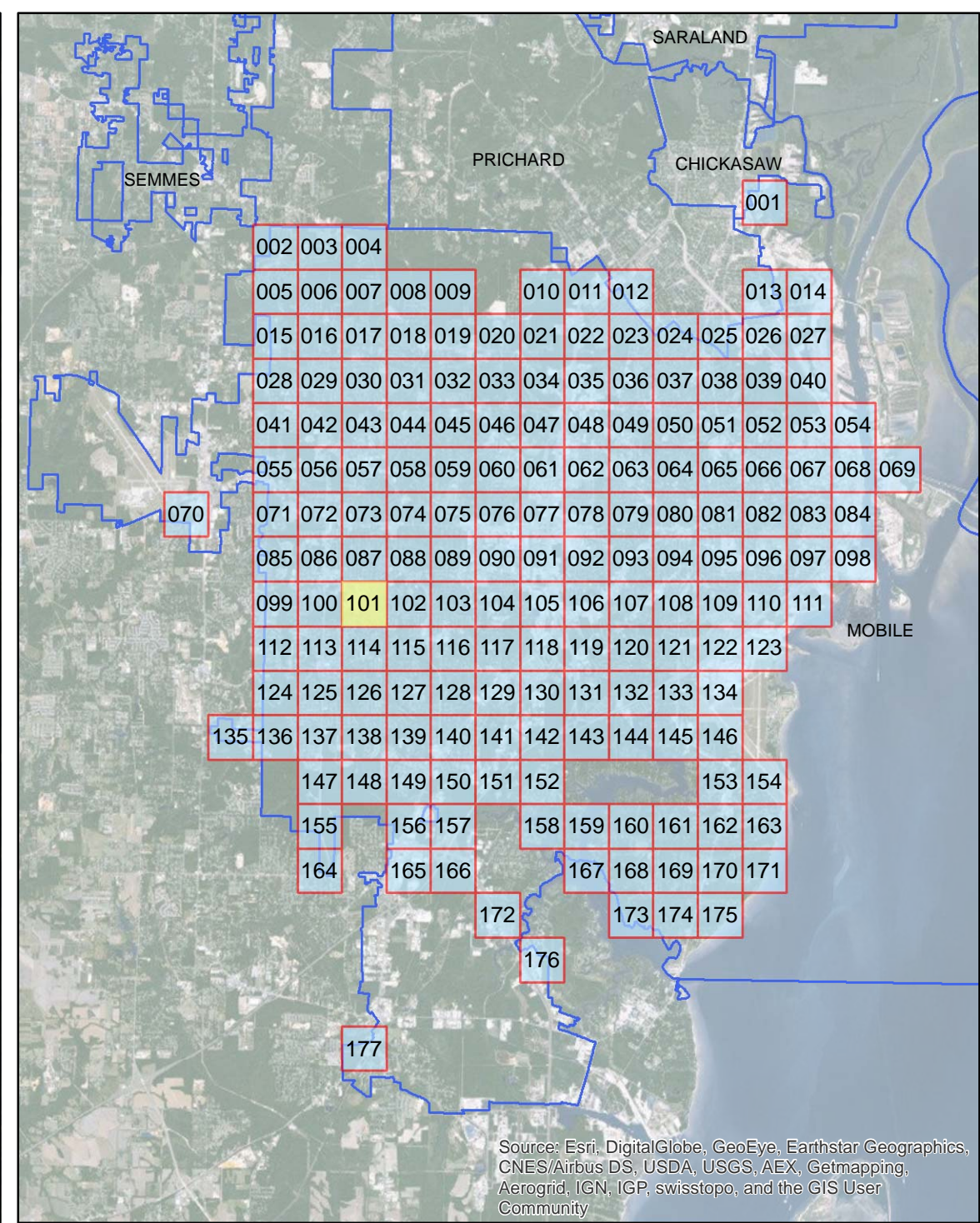
## ADA Transition Plan City of Mobile

- Legend**
- Layer**
- Sidewalk Meets Standards
  - Handicap Ramp Replacement
  - >75% Needs Replacement
  - Approximately 25% Needs Repair

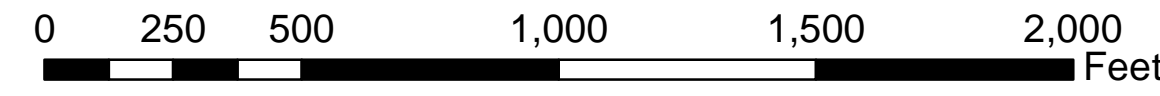




Source: Esri, DigitalGlobe, GeoEye, Earthstar Geographics, CNES/Airbus DS, USDA, USGS, AEX, Getmapping, Aerogrid, IGN, IGP, swisstopo, and the GIS User Community



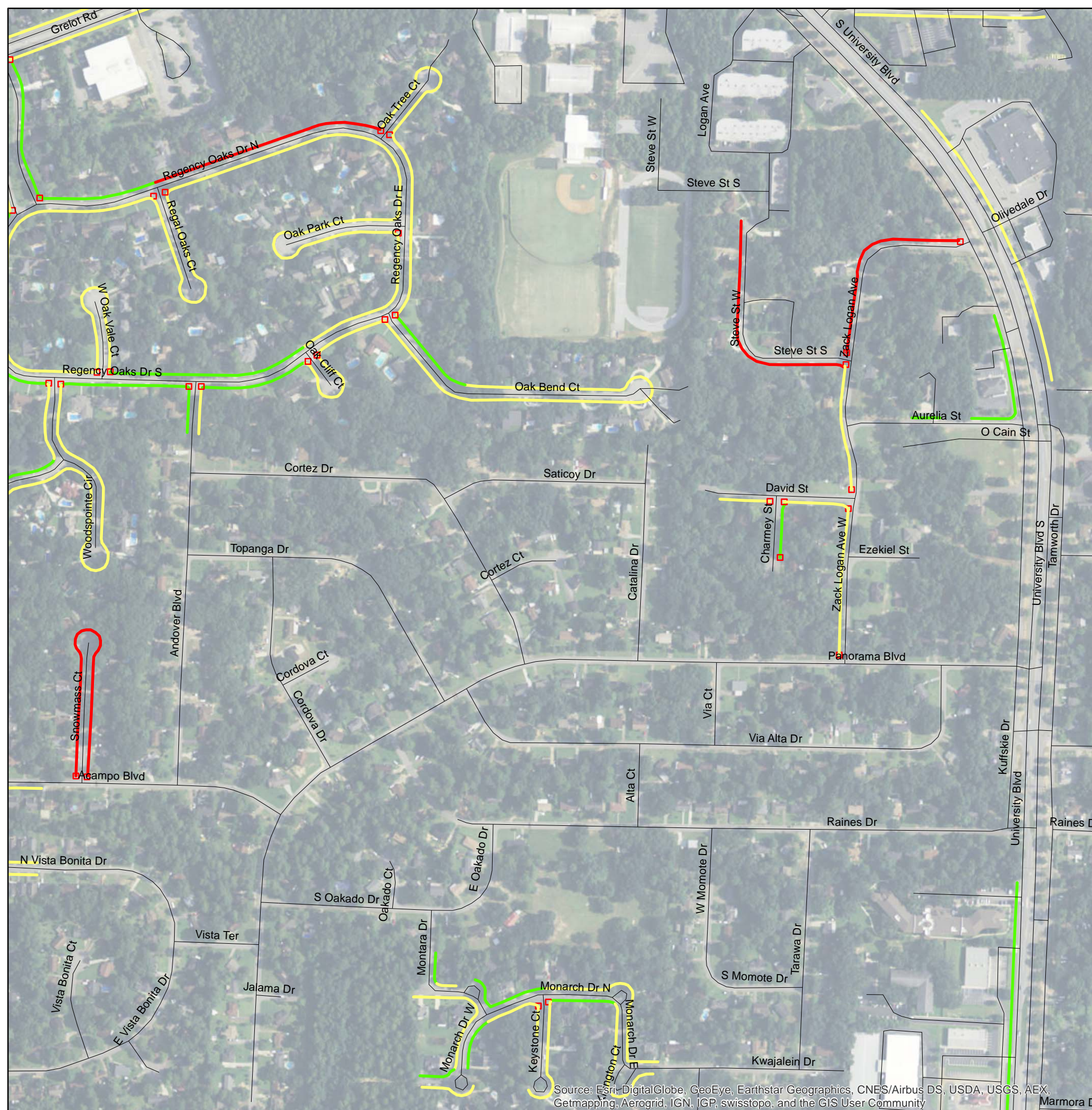
Source: Esri, DigitalGlobe, GeoEye, Earthstar Geographics, CNES/Airbus DS, USDA, USGS, AEX, Getmapping, Aerogrid, IGN, IGP, swisstopo, and the GIS User Community



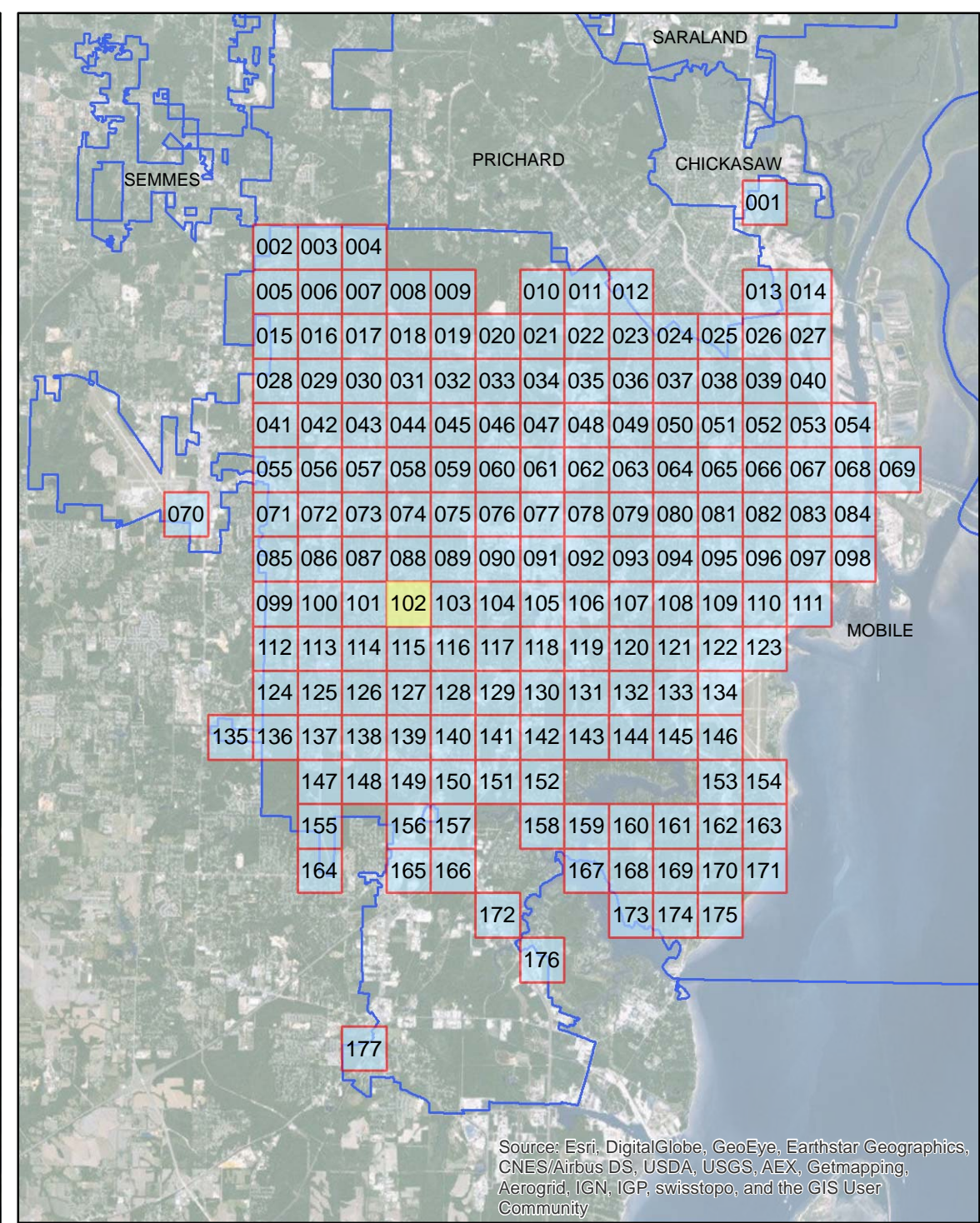
## ADA Transition Plan City of Mobile

- Legend**
- Layer**
- Sidewalk Meets Standards
  - Handicap Ramp Replacement
  - >75% Needs Replacement
  - Approximately 25% Needs Repair

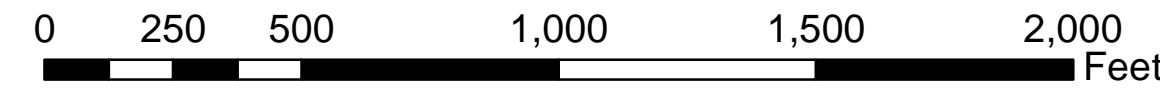




Source: Esri, DigitalGlobe, GeoEye, Earthstar Geographics, CNES/Airbus DS, USDA, USGS, AEX, Getmapping, Aerogrid, IGN, IGP, swisstopo, and the GIS User Community



Source: Esri, DigitalGlobe, GeoEye, Earthstar Geographics, CNES/Airbus DS, USDA, USGS, AEX, Getmapping, Aerogrid, IGN, IGP, swisstopo, and the GIS User Community



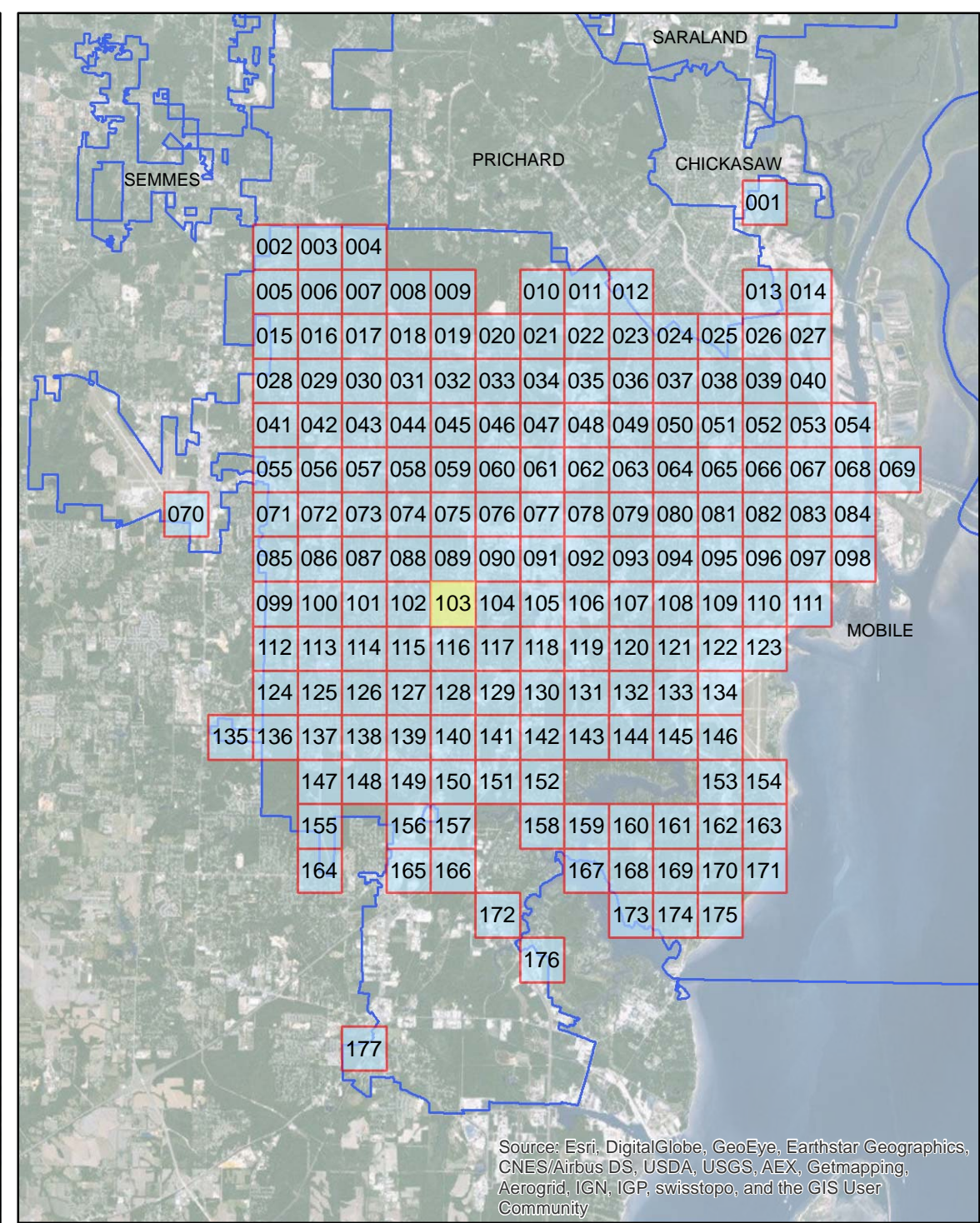
## ADA Transition Plan City of Mobile

- Legend**
- Layer**
- Sidewalk Meets Standards
  - Handicap Ramp Replacement
  - >75% Needs Replacement
  - Approximately 25% Needs Repair

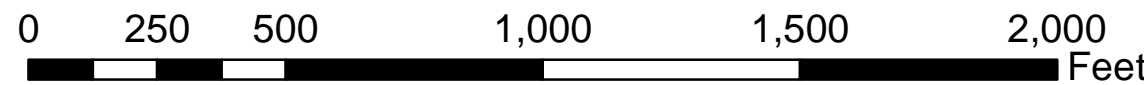




Source: Esri, DigitalGlobe, GeoEye, Earthstar Geographics, CNES/Airbus DS, USDA, USGS, AEX, Getmapping, Aerogrid, IGN, IGP, swisstopo, and the GIS User Community



Source: Esri, DigitalGlobe, GeoEye, Earthstar Geographics, CNES/Airbus DS, USDA, USGS, AEX, Getmapping, Aerogrid, IGN, IGP, swisstopo, and the GIS User Community



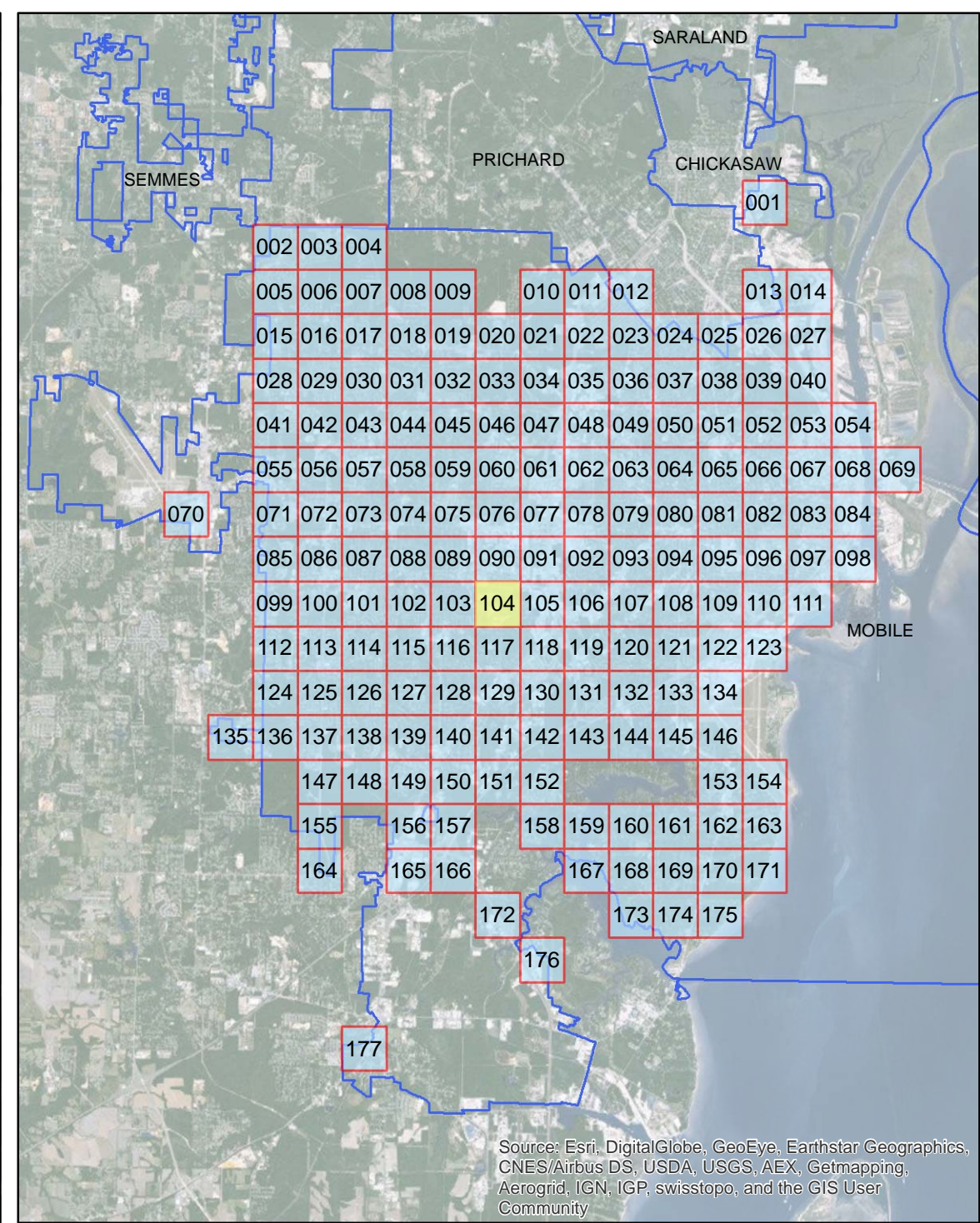
# ADA Transition Plan City of Mobile

- Legend**
- Layer**
- Sidewalk Meets Standards
  - Handicap Ramp Replacement
  - >75% Needs Replacement
  - Approximately 25% Needs Repair

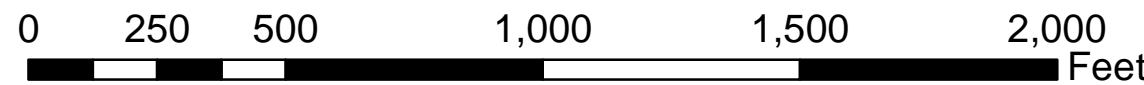




Source: Esri, DigitalGlobe, GeoEye, Earthstar Geographics, CNES/Airbus DS, USDA, USGS, AEX, Getmapping, Aerogrid, IGN, IGP, swisstopo, and the GIS User Community



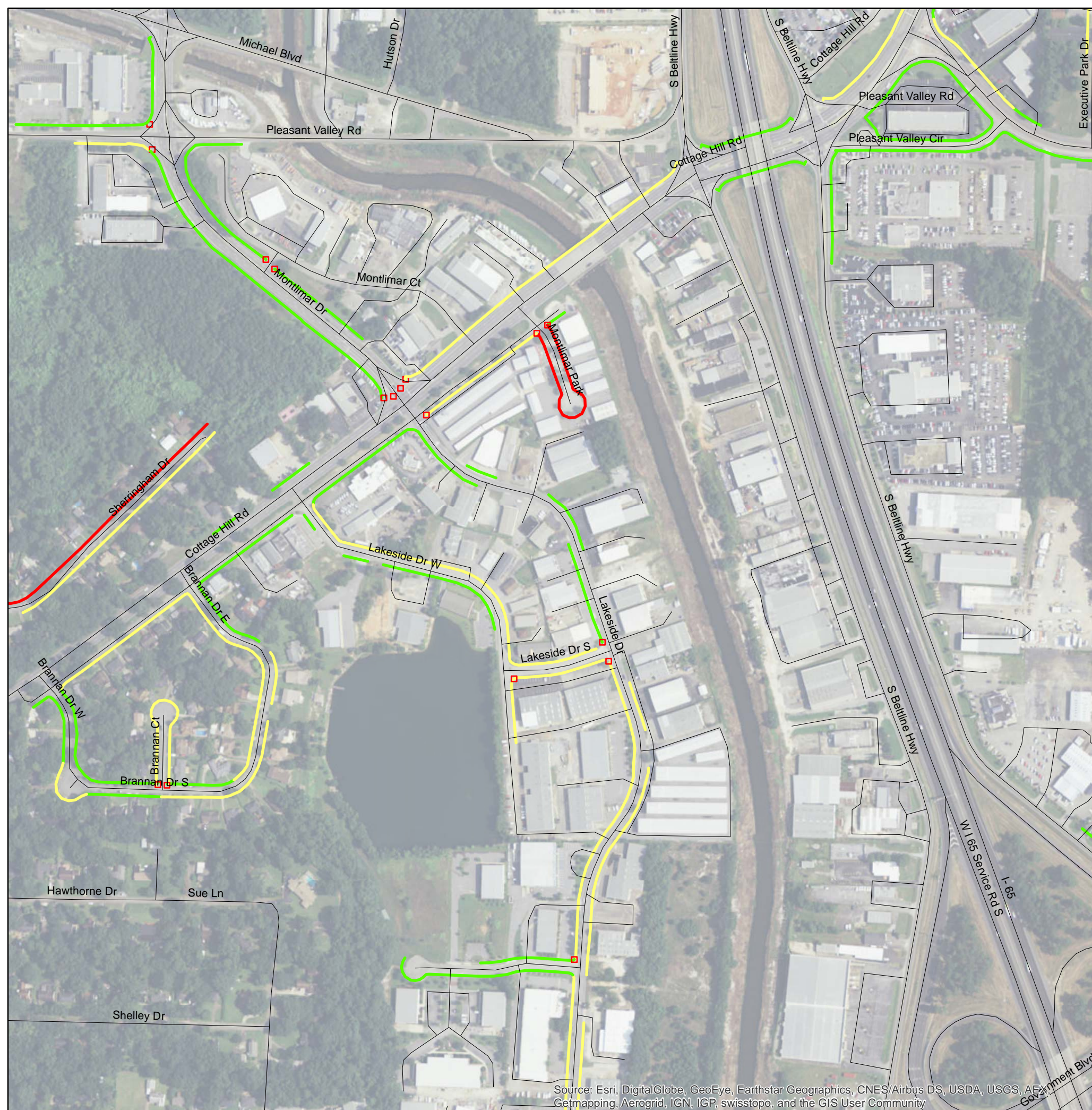
Source: Esri, DigitalGlobe, GeoEye, Earthstar Geographics, CNES/Airbus DS, USDA, USGS, AEX, Getmapping, Aerogrid, IGN, IGP, swisstopo, and the GIS User Community



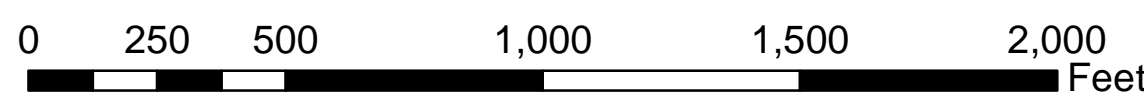
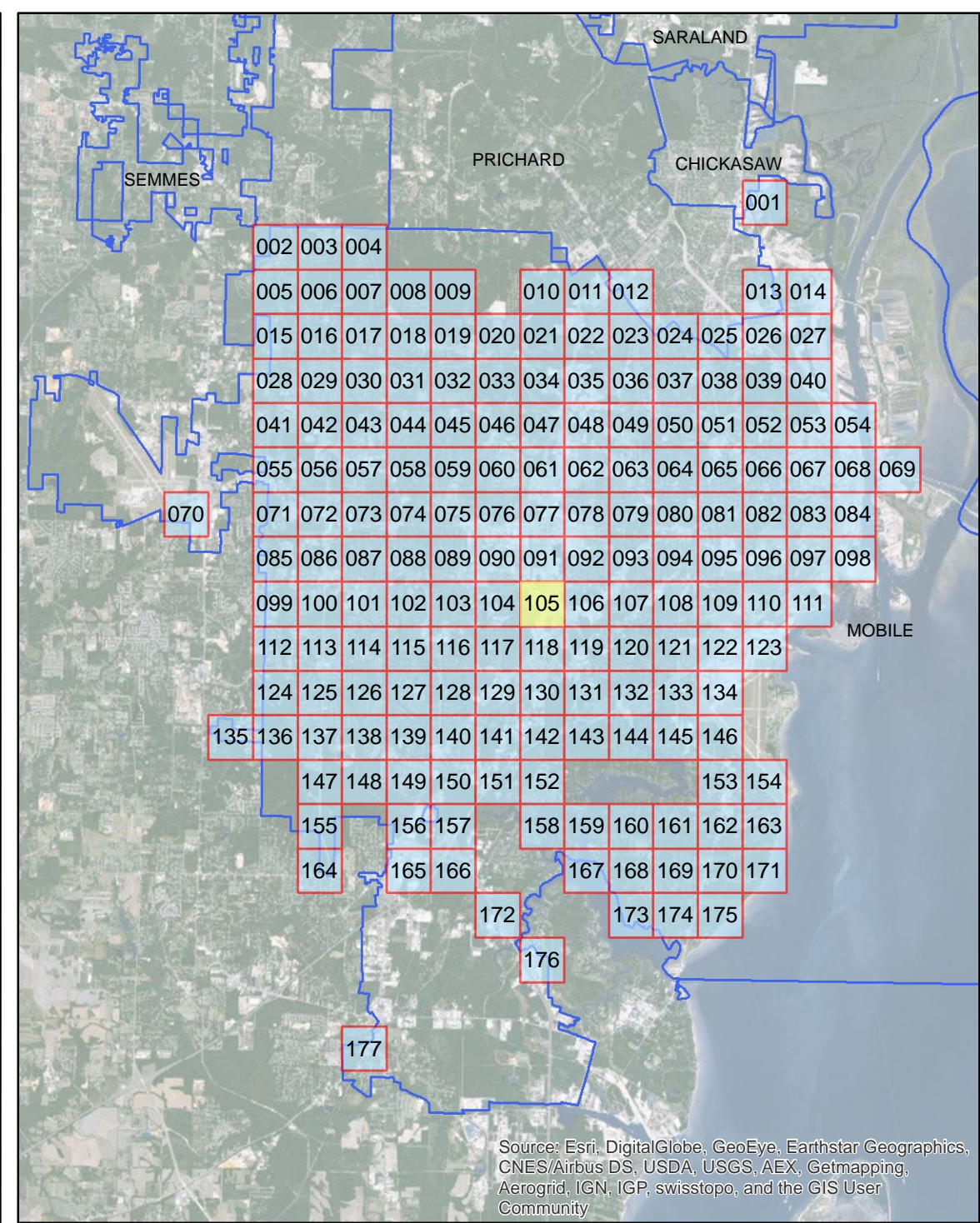
## ADA Transition Plan City of Mobile

- Legend**
- Layer**
- Sidewalk Meets Standards
  - Handicap Ramp Replacement
  - >75% Needs Replacement
  - Approximately 25% Needs Repair





Source: Esri, DigitalGlobe, GeoEye, Earthstar Geographics, CNES/Airbus DS, USDA, USGS, AEX, Getmapping, Aerogrid, IGN, IGP, swisstopo, and the GIS User Community



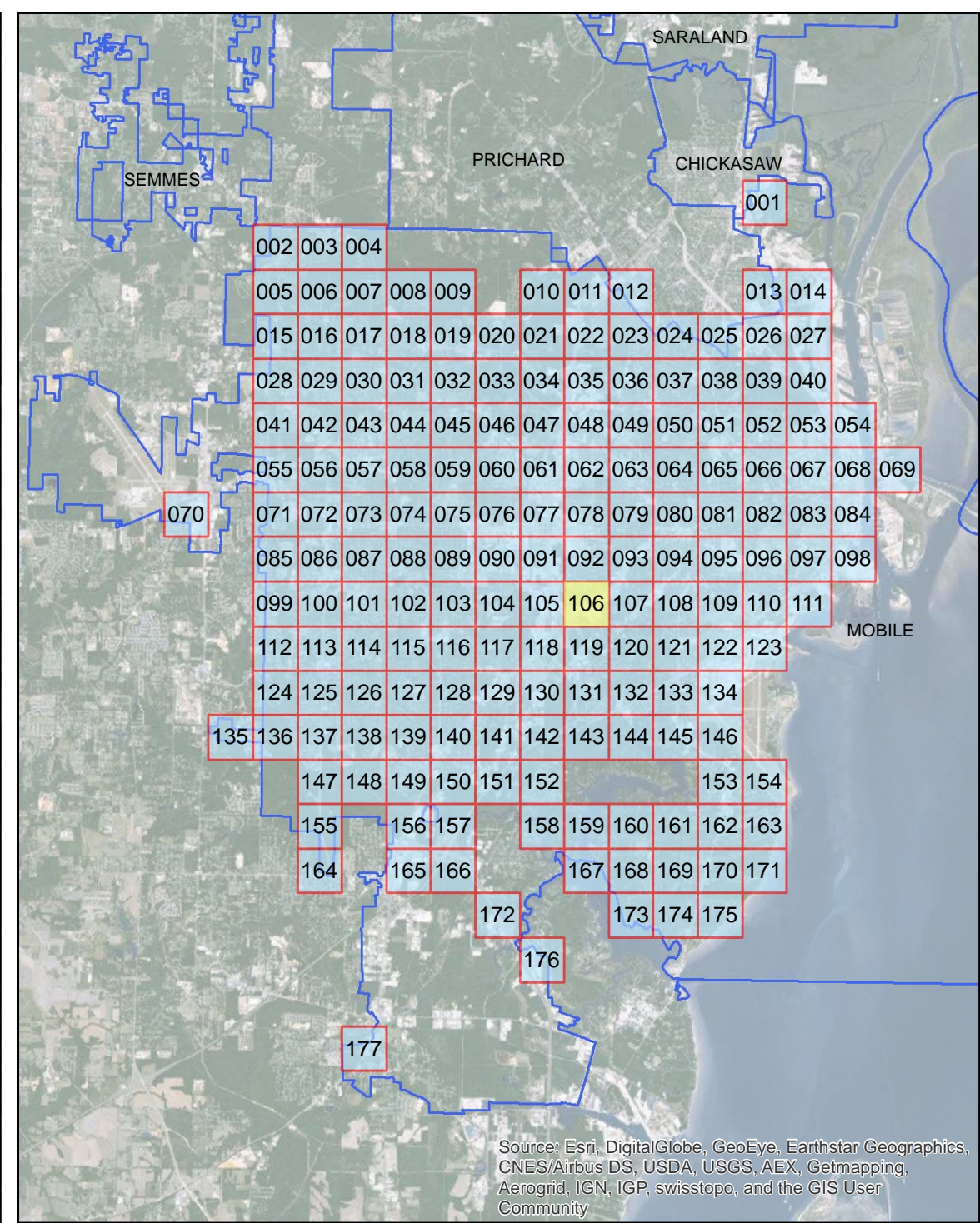
## ADA Transition Plan City of Mobile

- Legend**
- Layer**
- Sidewalk Meets Standards
  - Handicap Ramp Replacement
  - >75% Needs Replacement
  - Approximately 25% Needs Repair

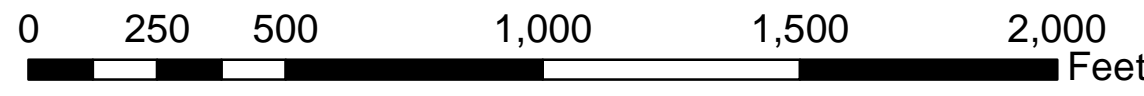




Source: Esri, DigitalGlobe, GeoEye, Earthstar Geographics, CNES/Airbus DS, USDA, USGS, AEX, Getmapping, Aerogrid, IGN, IGP, swisstopo, and the GIS User Community



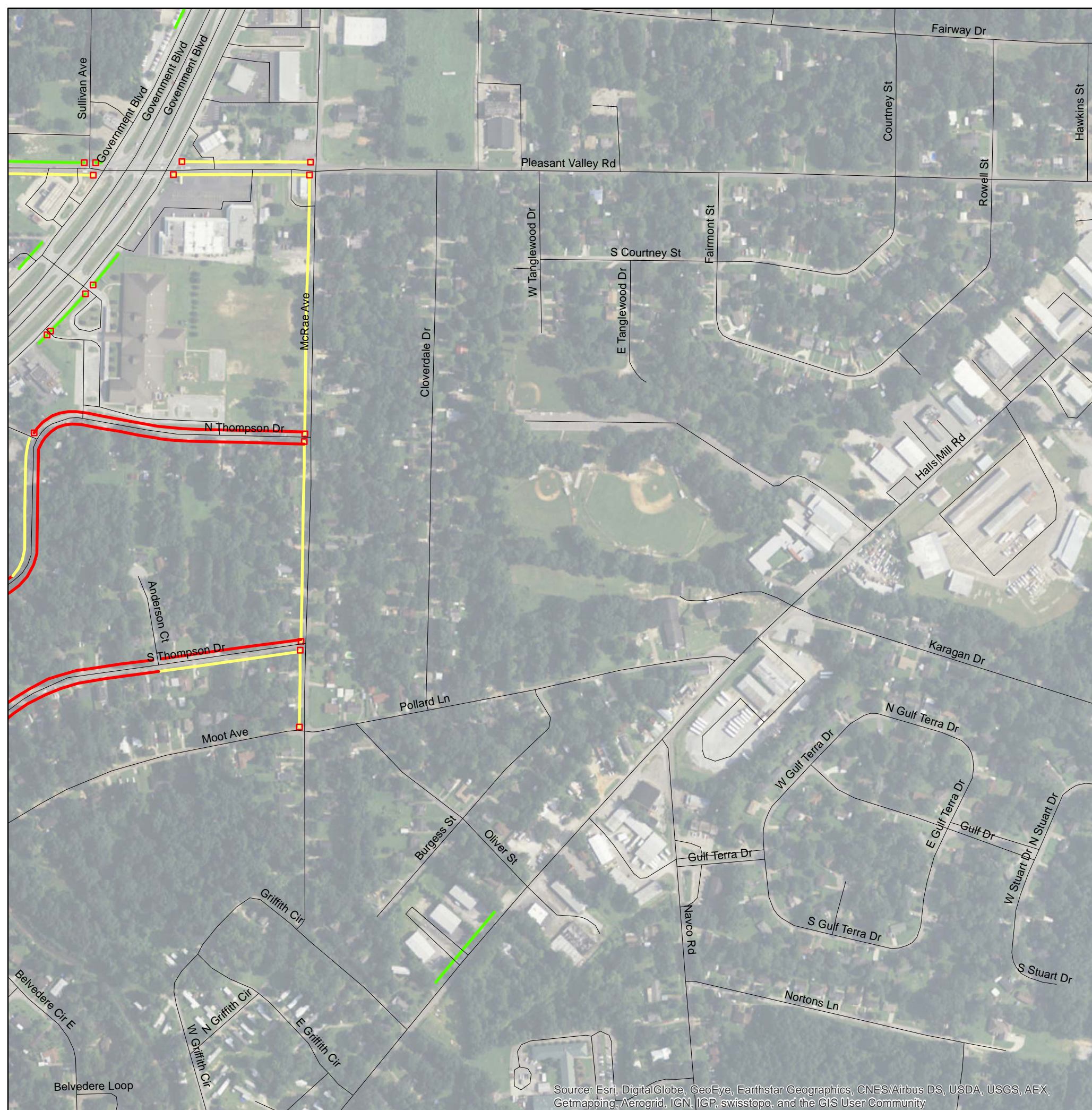
Source: Esri, DigitalGlobe, GeoEye, Earthstar Geographics, CNES/Airbus DS, USDA, USGS, AEX, Getmapping, Aerogrid, IGN, IGP, swisstopo, and the GIS User Community



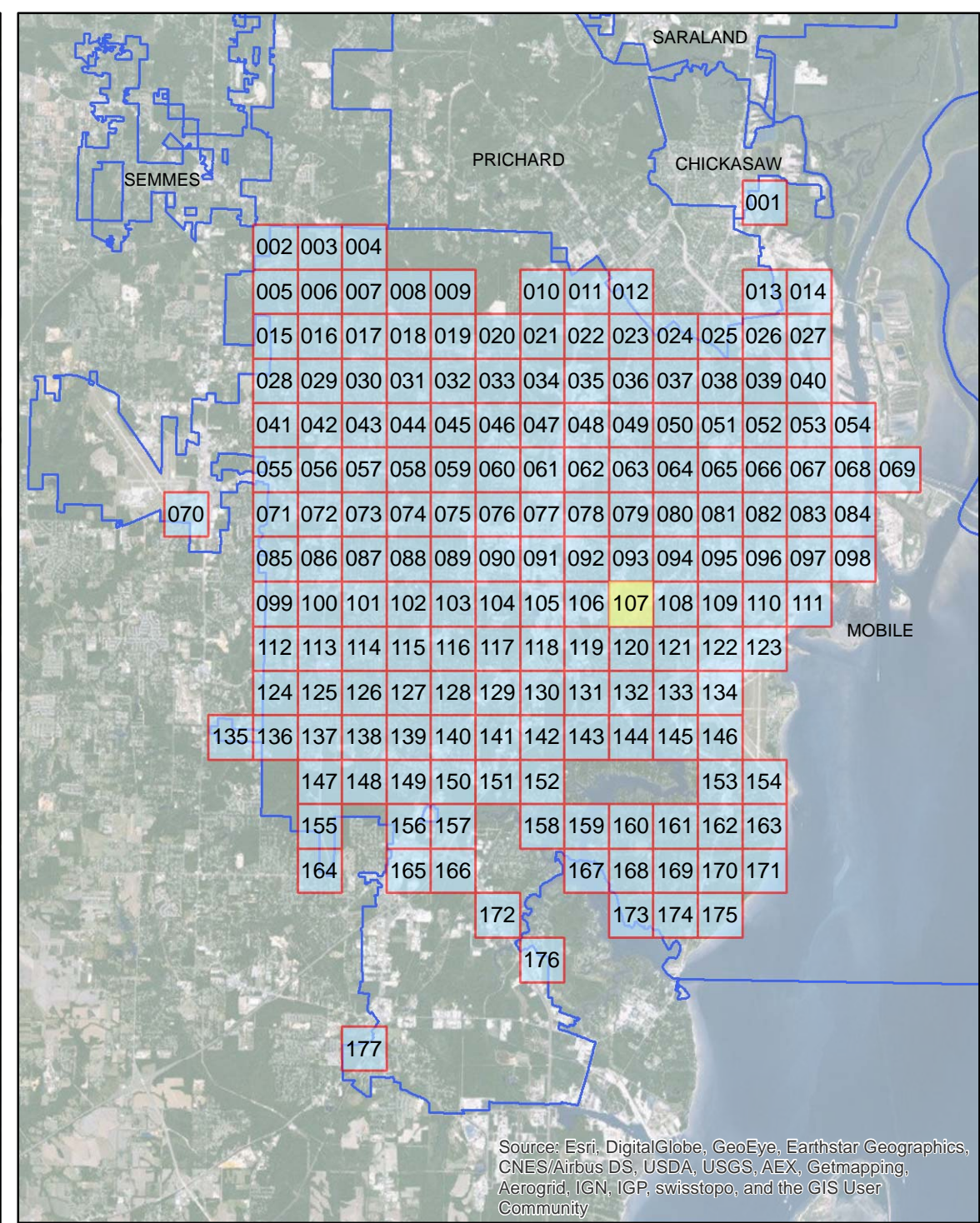
# ADA Transition Plan City of Mobile

- Legend**
- Layer**
- Sidewalk Meets Standards
  - Handicap Ramp Replacement
  - >75% Needs Replacement
  - Approximately 25% Needs Repair

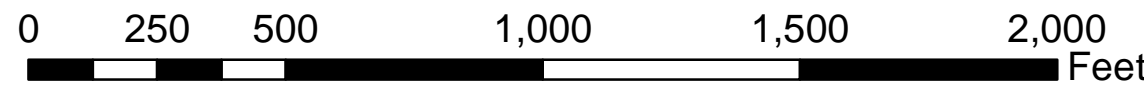




Source: Esri, DigitalGlobe, GeoEye, Earthstar Geographics, CNES/Airbus DS, USDA, USGS, AEX, Getmapping, Aerogrid, IGN, IGP, swisstopo, and the GIS User Community



Source: Esri, DigitalGlobe, GeoEye, Earthstar Geographics, CNES/Airbus DS, USDA, USGS, AEX, Getmapping, Aerogrid, IGN, IGP, swisstopo, and the GIS User Community

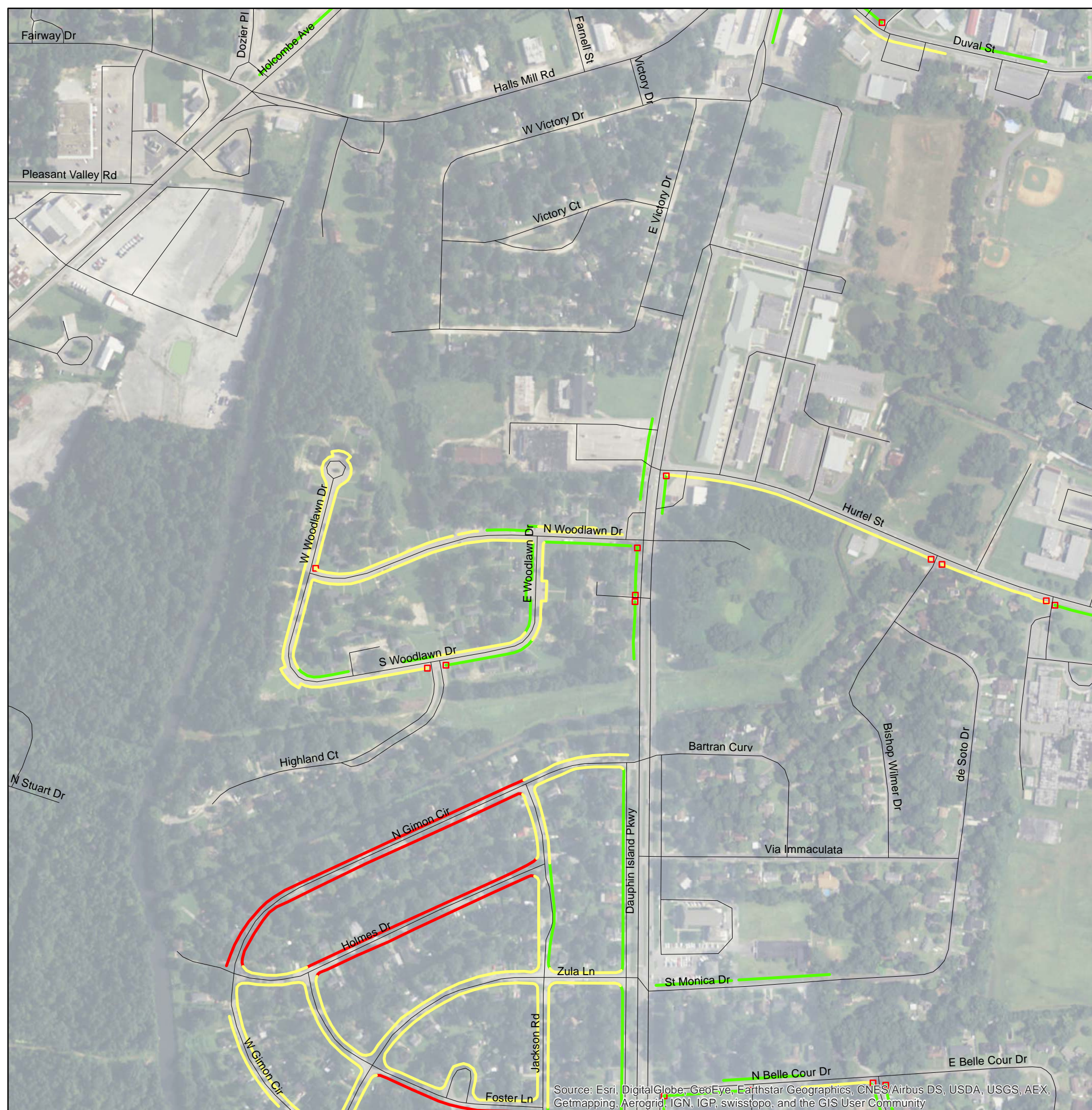


## ADA Transition Plan City of Mobile

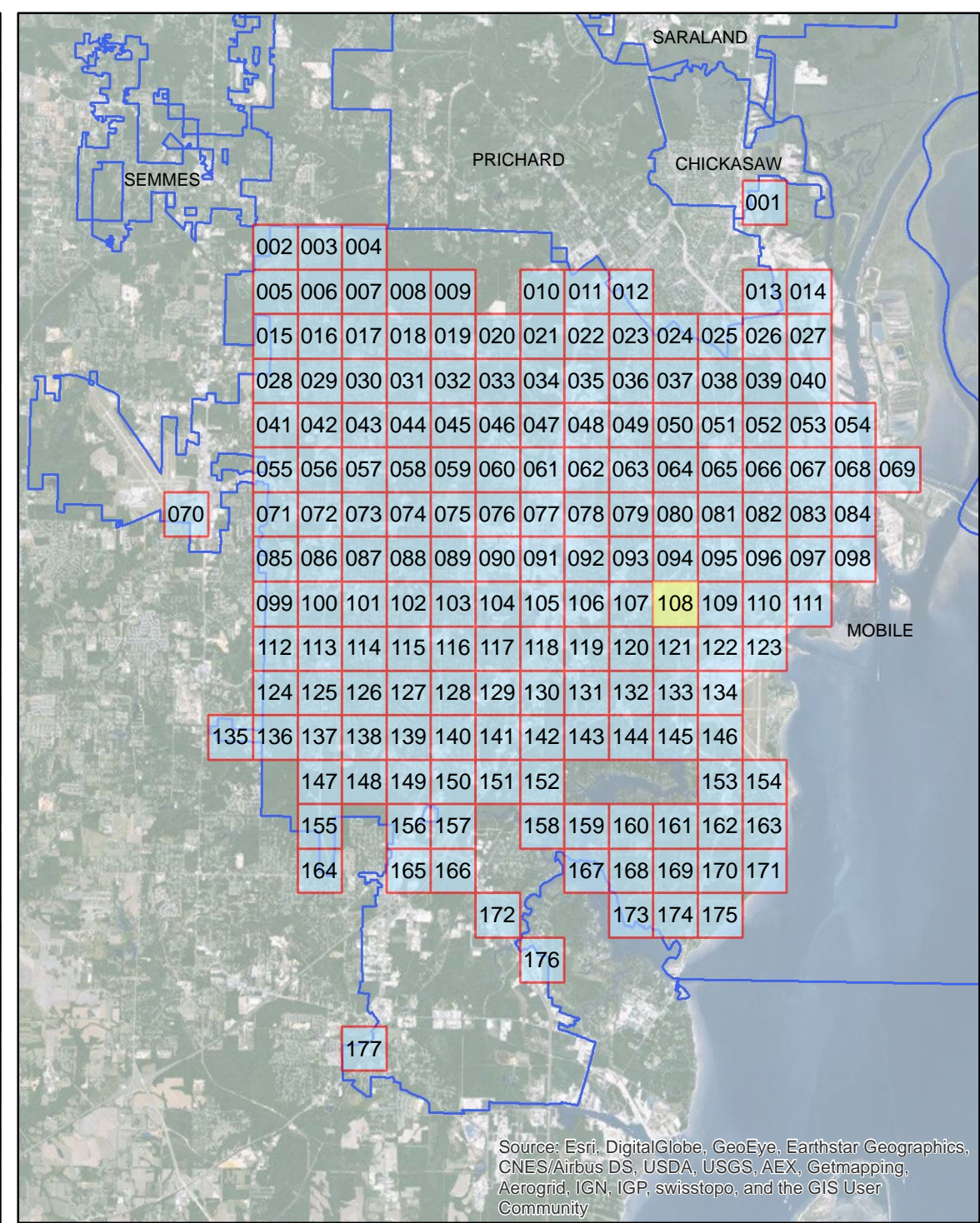
- Legend**
- Layer**
- Sidewalk Meets Standards
  - Handicap Ramp Replacement
  - >75% Needs Replacement
  - Approximately 25% Needs Repair



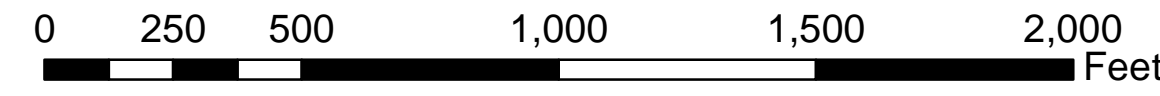




Source: Esri, DigitalGlobe, GeoEye, Earthstar Geographics, CNES/Airbus DS, USDA, USGS, AEX, Getmapping, Aerogrid, IGN, IGP, swisstopo, and the GIS User Community



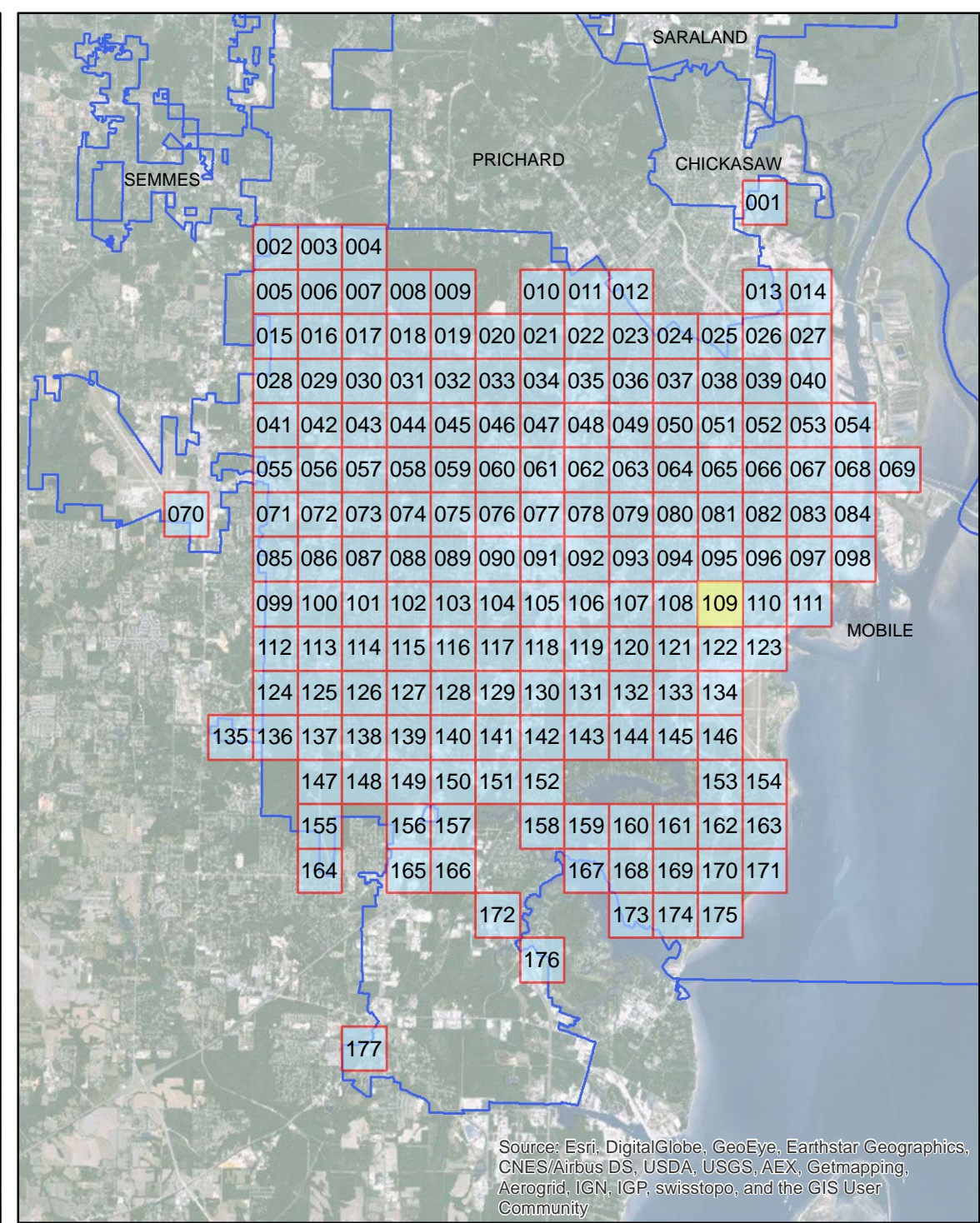
Source: Esri, DigitalGlobe, GeoEye, Earthstar Geographics, CNES/Airbus DS, USDA, USGS, AEX, Getmapping, Aerogrid, IGN, IGP, swisstopo, and the GIS User Community



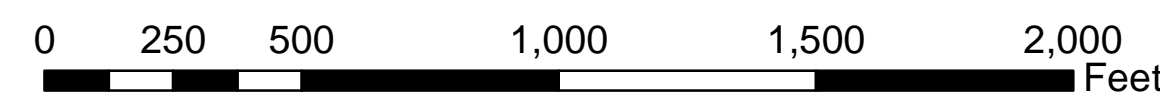
## ADA Transition Plan City of Mobile

- Legend**
- Layer**
- Sidewalk Meets Standards
  - Handicap Ramp Replacement
  - >75% Needs Replacement
  - Approximately 25% Needs Repair





Source: Esri, DigitalGlobe, GeoEye, Earthstar Geographics, CNES/Airbus DS, USDA, USGS, AEX, Getmapping, Aerogrid, IGN, IGP, swisstopo, and the GIS User Community



## ADA Transition Plan City of Mobile

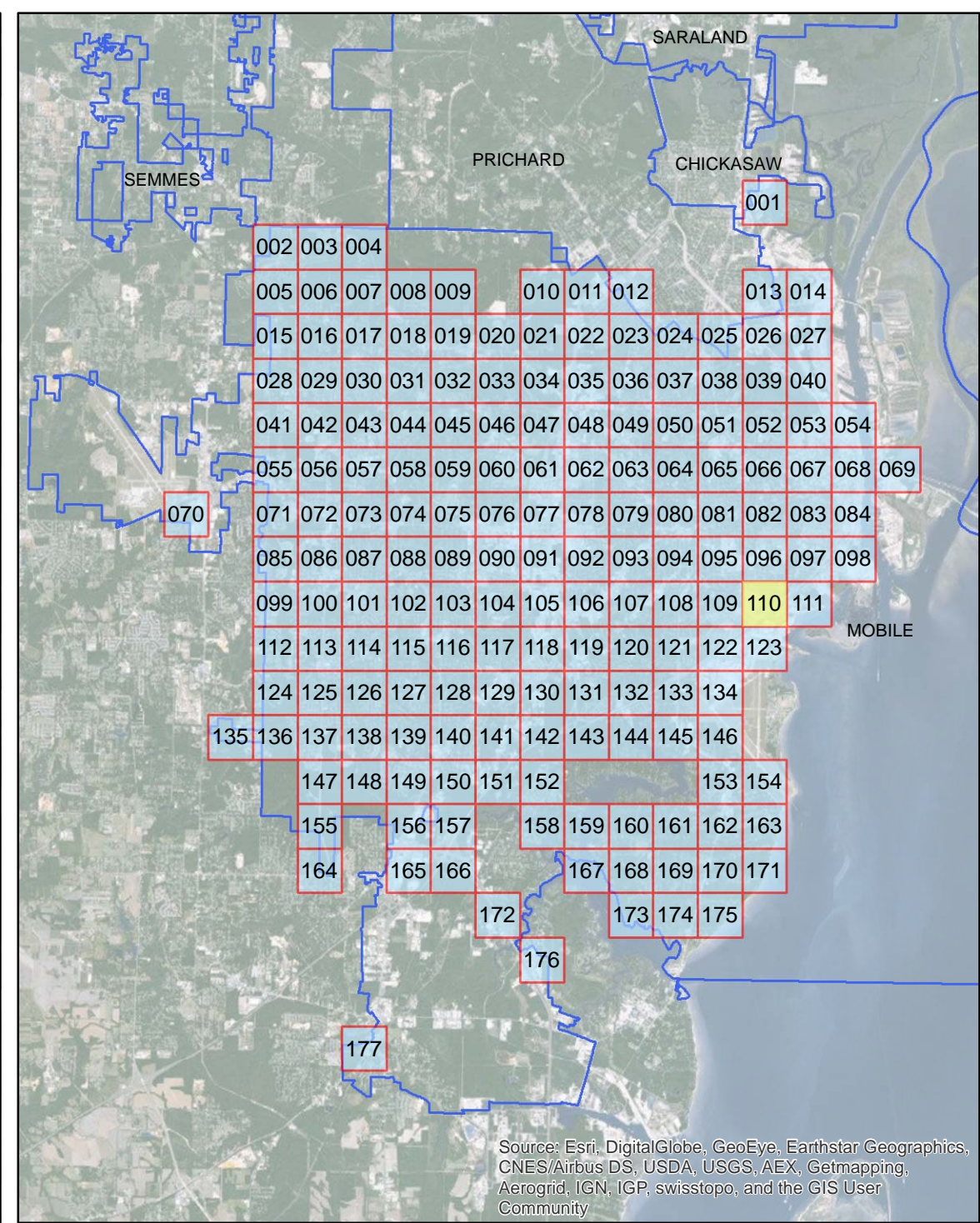
- Legend**
- Layer**
- Sidewalk Meets Standards
  - Handicap Ramp Replacement
  - >75% Needs Replacement
  - Approximately 25% Needs Repair



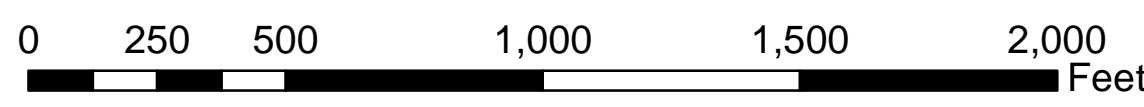
Source: Esri, DigitalGlobe, GeoEye, Earthstar Geographics, CNES/Airbus DS, USDA, USGS, AEX, Getmapping, Aerogrid, IGN, IGP, swisstopo, and the GIS User Community



Source: Esri, DigitalGlobe, GeoEye, Earthstar Geographics, CNES/Airbus DS, USDA, USGS, AEX, Getmapping, Aerogrid, IGN, IGP, swisstopo, and the GIS User Community



Source: Esri, DigitalGlobe, GeoEye, Earthstar Geographics, CNES/Airbus DS, USDA, USGS, AEX, Getmapping, Aerogrid, IGN, IGP, swisstopo, and the GIS User Community



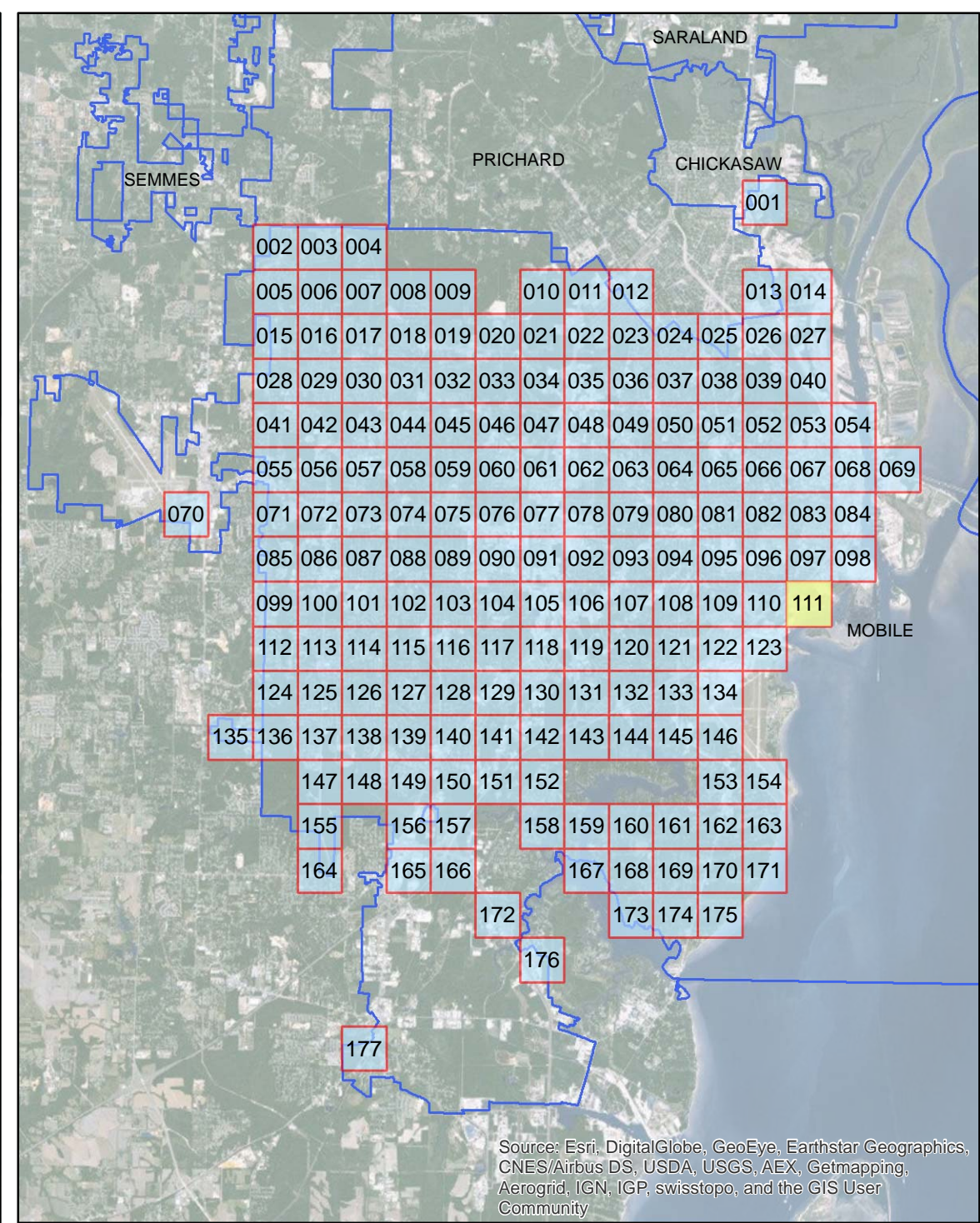
## ADA Transition Plan City of Mobile

- Legend**
- Layer**
- Sidewalk Meets Standards
  - Handicap Ramp Replacement
  - >75% Needs Replacement
  - Approximately 25% Needs Repair

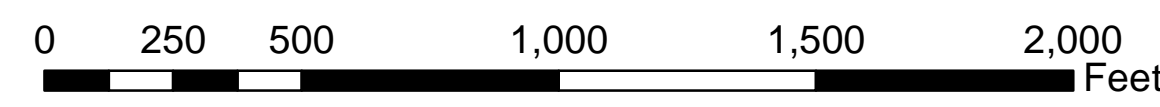




Source: Esri, DigitalGlobe, GeoEye, Earthstar Geographics, CNES/Airbus DS, USDA, USGS, AEX, Getmapping, Aerogrid, IGN, IGP, swisstopo, and the GIS User Community



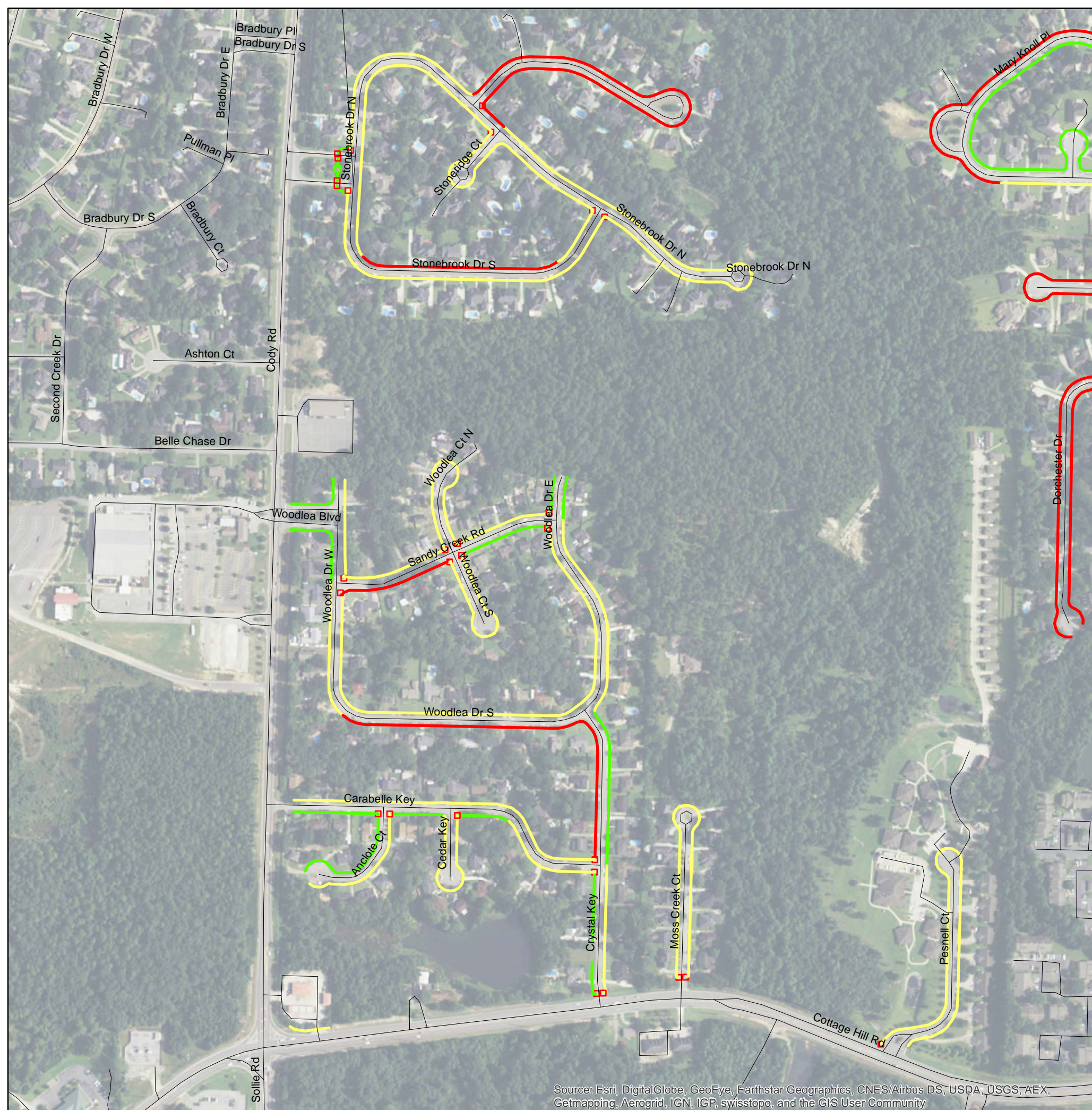
Source: Esri, DigitalGlobe, GeoEye, Earthstar Geographics, CNES/Airbus DS, USDA, USGS, AEX, Getmapping, Aerogrid, IGN, IGP, swisstopo, and the GIS User Community



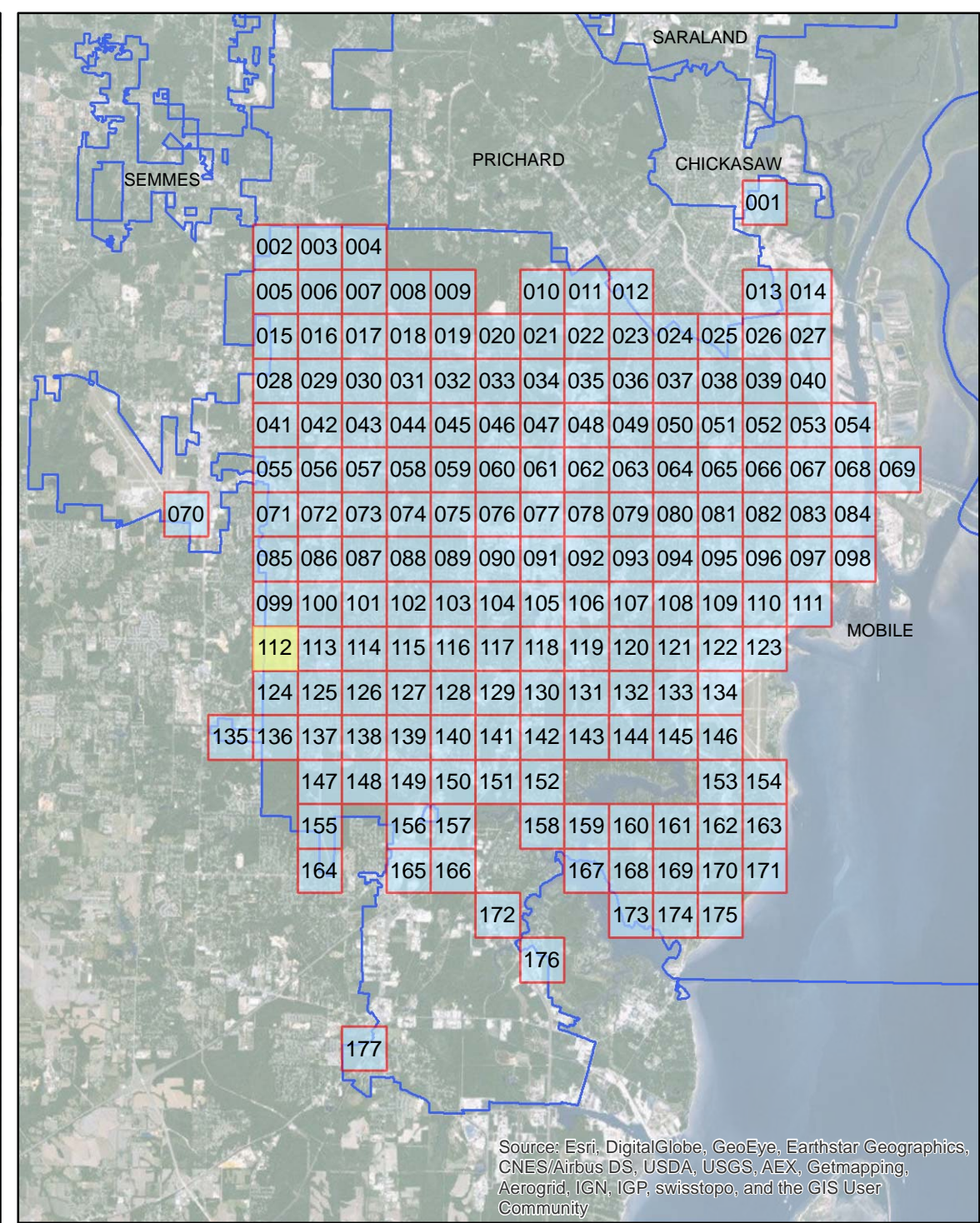
## ADA Transition Plan City of Mobile

- Legend**
- Layer**
- Sidewalk Meets Standards
  - Handicap Ramp Replacement
  - >75% Needs Replacement
  - Approximately 25% Needs Repair

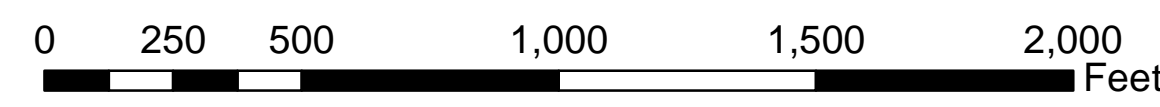




Source: Esri, DigitalGlobe, GeoEye, Earthstar Geographics, CNES/Airbus DS, USDA, USGS, AEX, Getmapping, Aerogrid, IGN, IGP, swisstopo, and the GIS User Community



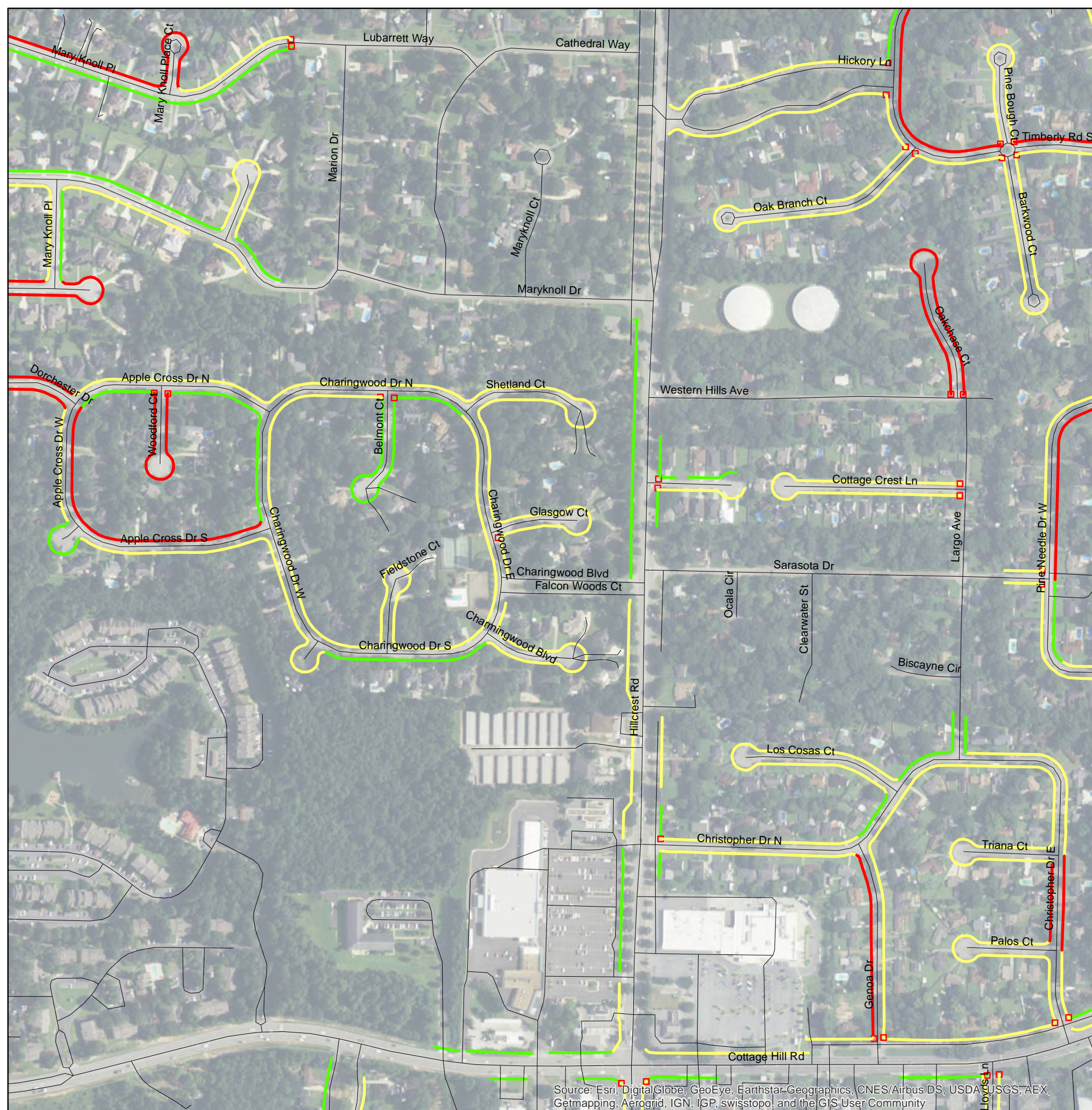
Source: Esri, DigitalGlobe, GeoEye, Earthstar Geographics, CNES/Airbus DS, USDA, USGS, AEX, Getmapping, Aerogrid, IGN, IGP, swisstopo, and the GIS User Community



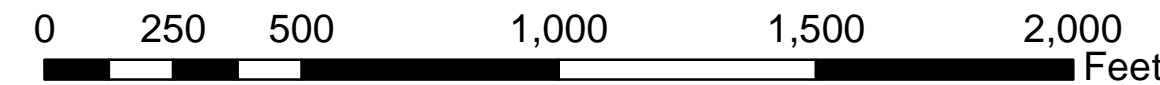
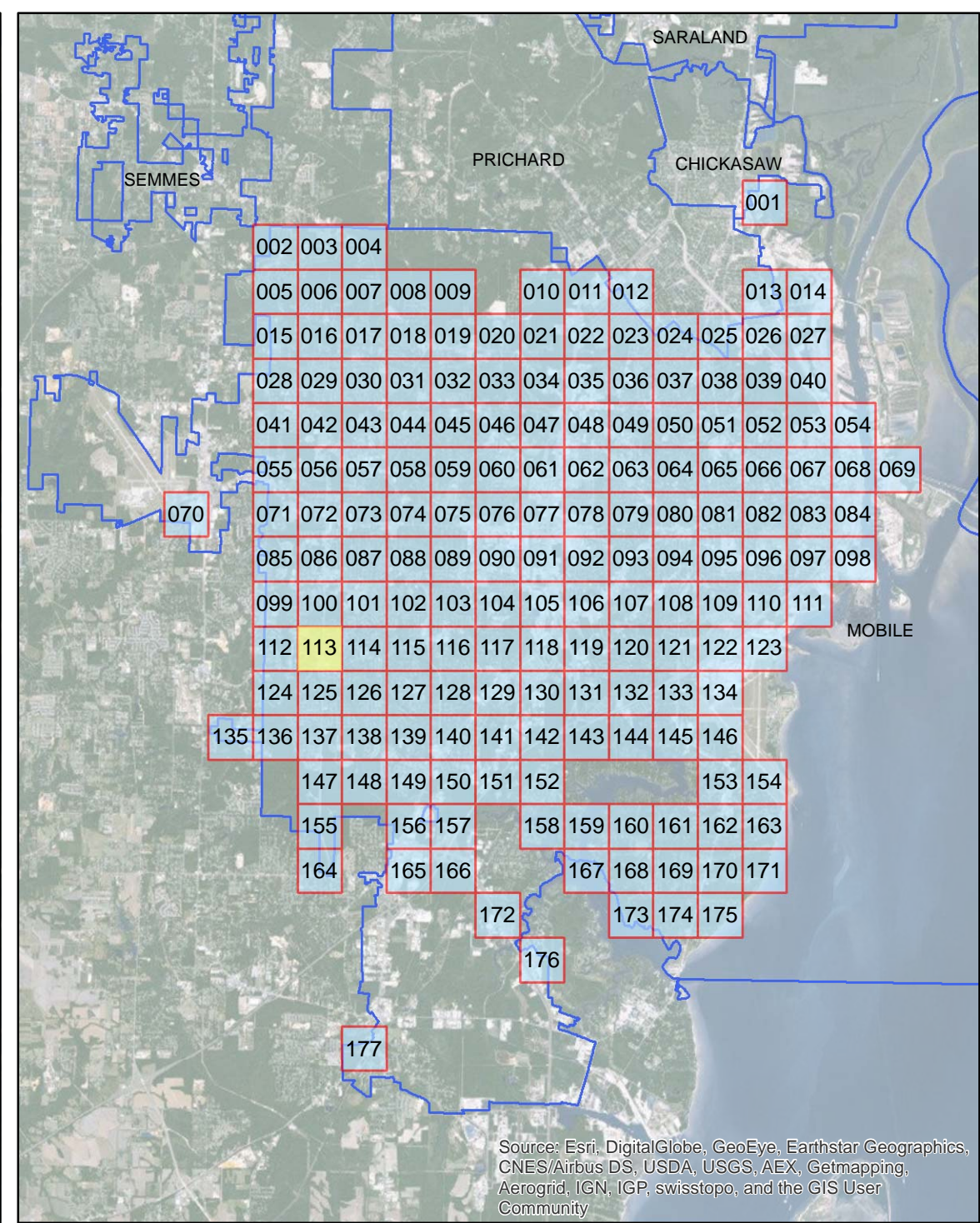
## ADA Transition Plan City of Mobile

- Legend**
- Layer**
- Sidewalk Meets Standards
  - Handicap Ramp Replacement
  - >75% Needs Replacement
  - Approximately 25% Needs Repair





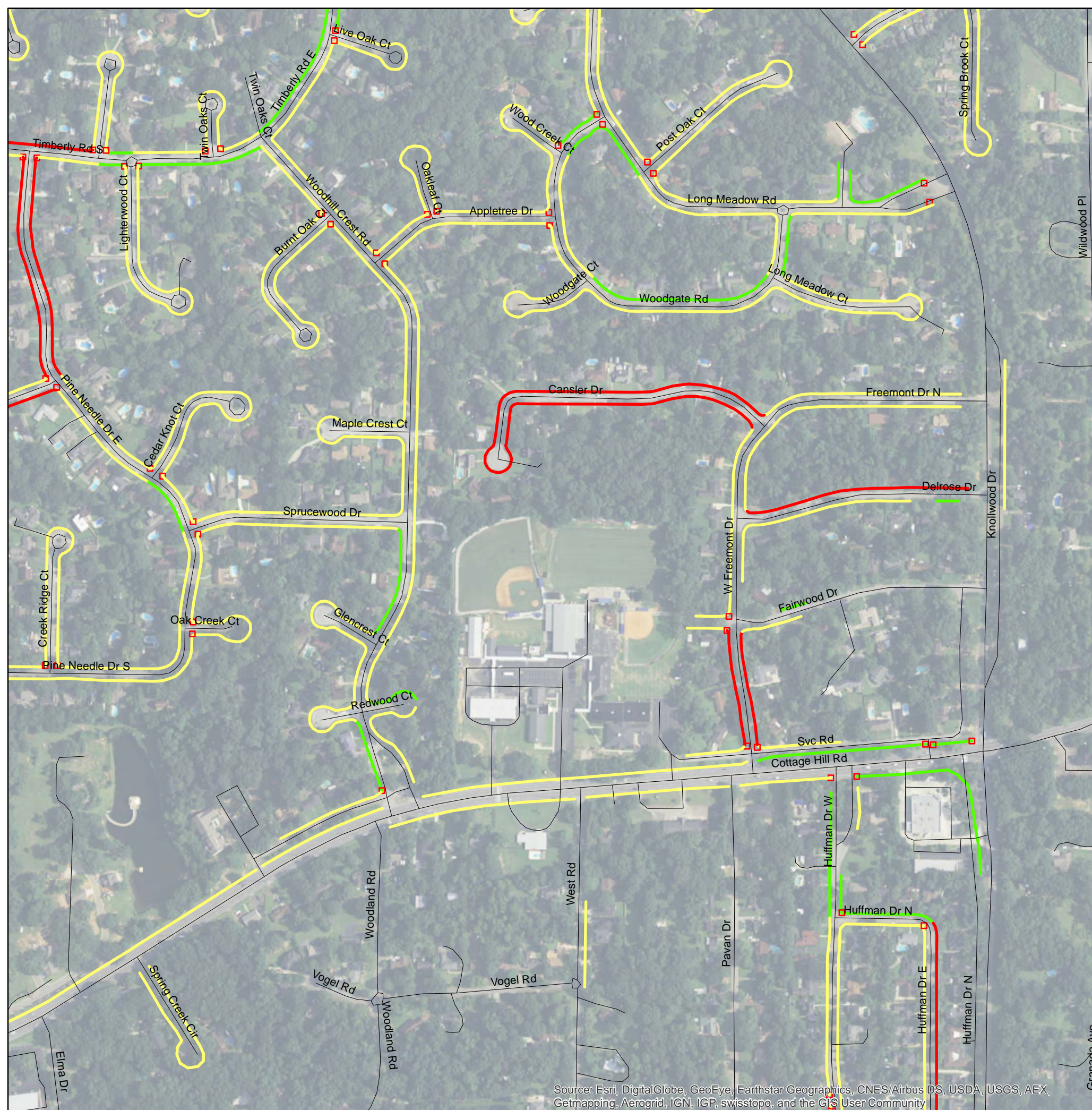
Source: Esri, DigitalGlobe, GeoEye, Earthstar Geographics, CNES/Airbus DS, USDA, USGS, AEX, Getmapping, Aerogrid, IGN, IGP, swisstopo, and the GIS User Community



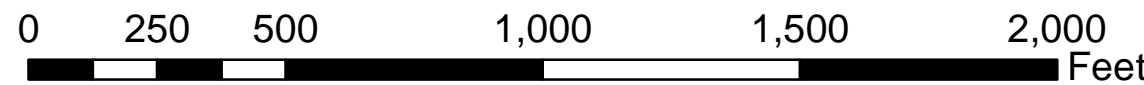
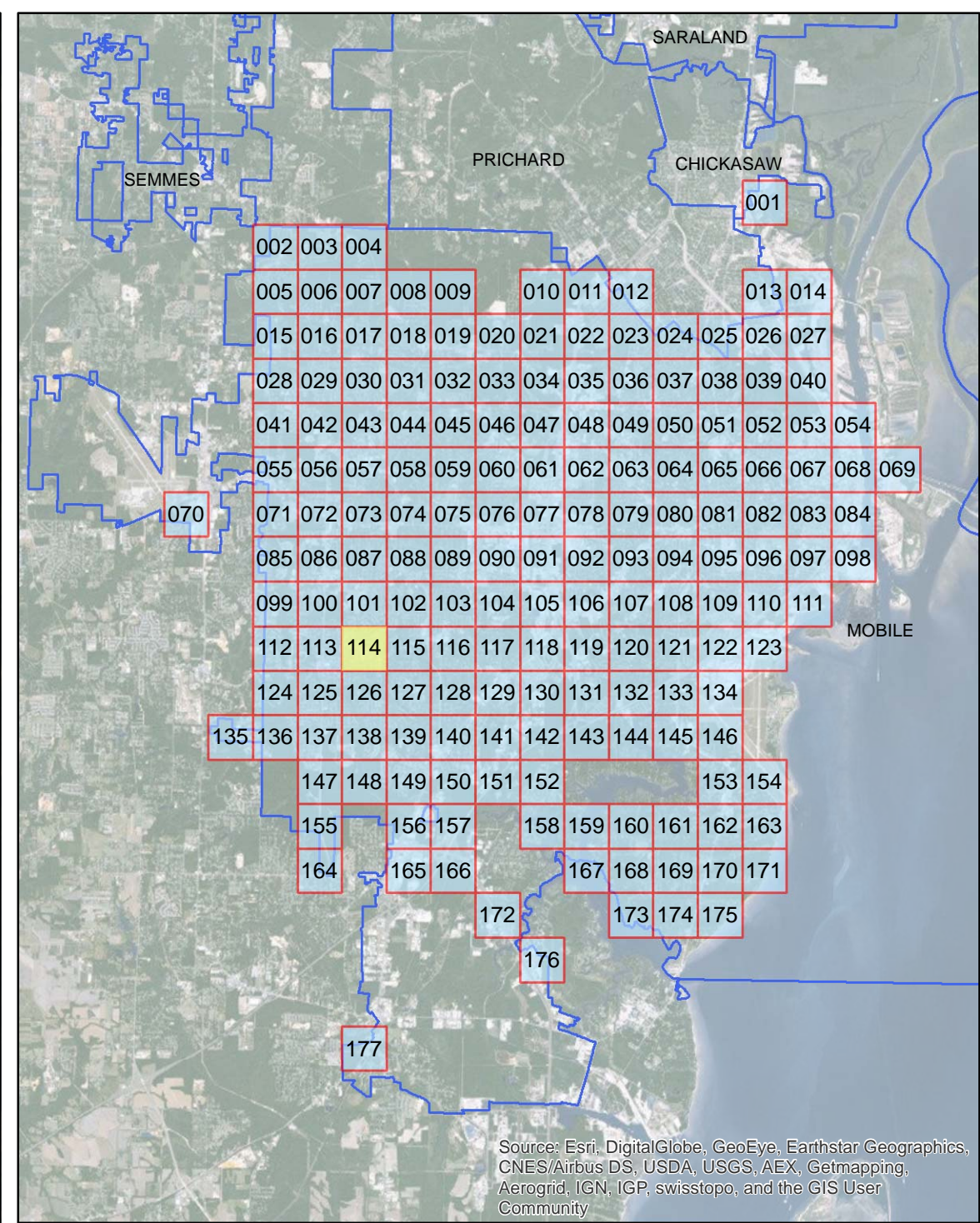
## ADA Transition Plan City of Mobile

- Legend**
- Layer**
- Sidewalk Meets Standards
  - Handicap Ramp Replacement
  - >75% Needs Replacement
  - Approximately 25% Needs Repair





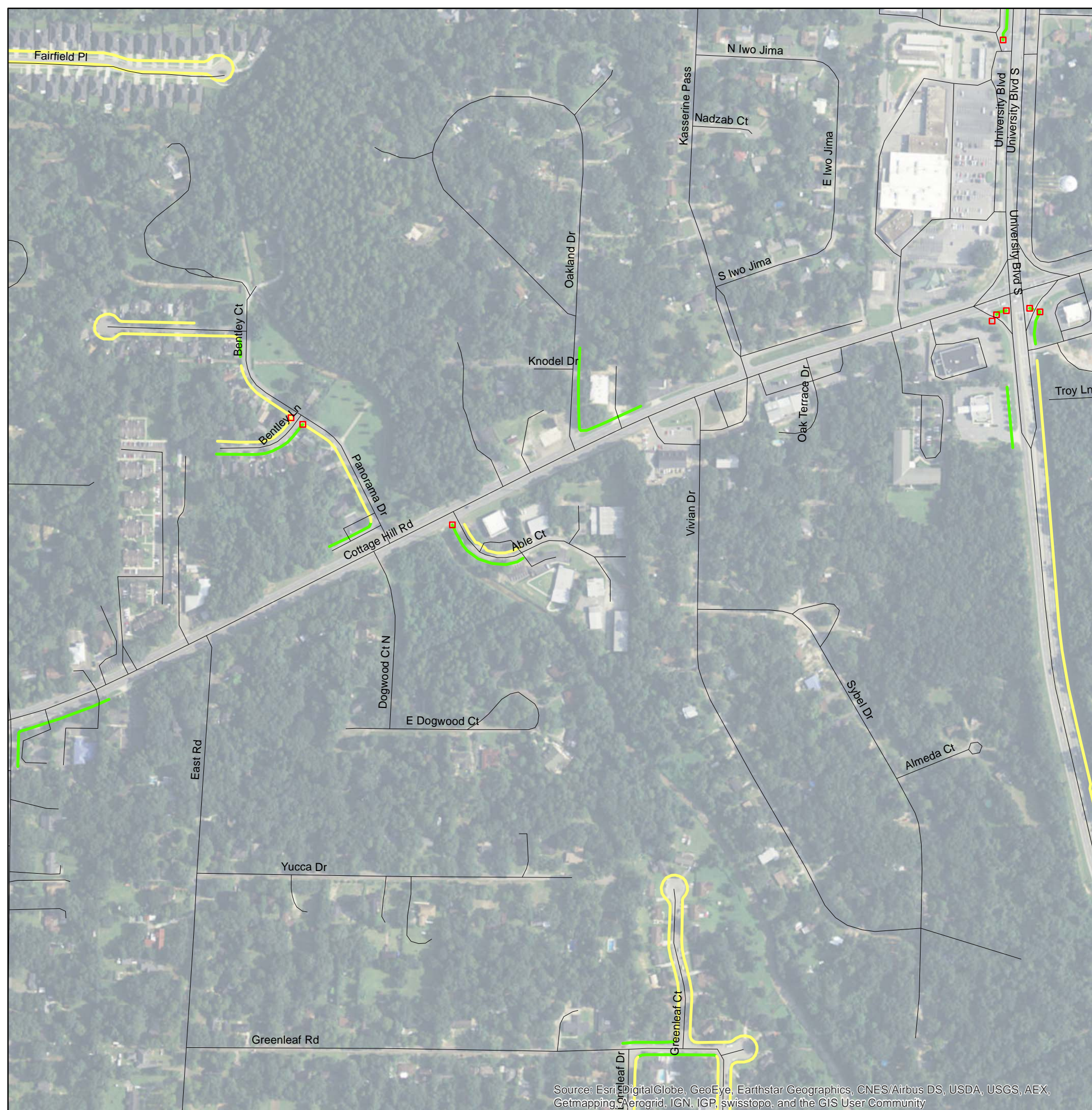
Source: Esri, DigitalGlobe, GeoEye, Earthstar Geographics, CNES/Airbus DS, USDA, USGS, AEX, Getmapping, Aerogrid, IGN, IGP, swisstopo, and the GIS User Community



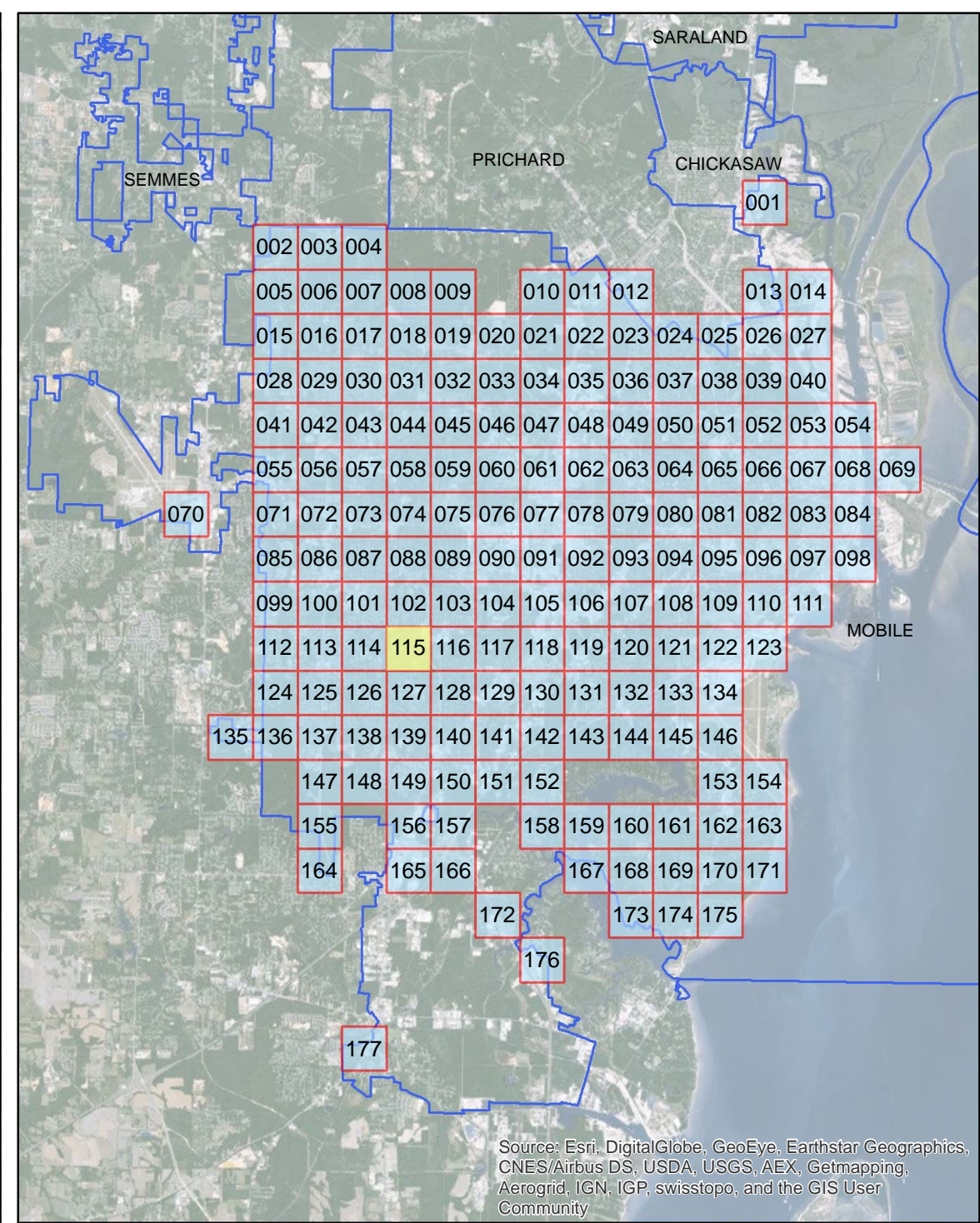
## ADA Transition Plan City of Mobile

- Legend**
- Layer**
- Sidewalk Meets Standards
  - Handicap Ramp Replacement
  - >75% Needs Replacement
  - Approximately 25% Needs Repair

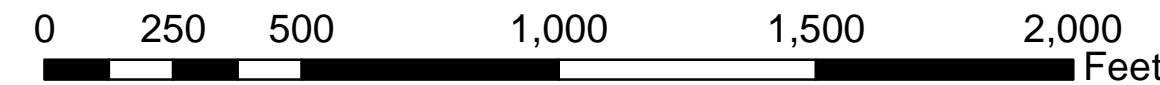




Source: Esri, DigitalGlobe, GeoEye, Earthstar Geographics, CNES/Airbus DS, USDA, USGS, AEX, Getmapping, Aerogrid, IGN, IGP, swisstopo, and the GIS User Community



Source: Esri, DigitalGlobe, GeoEye, Earthstar Geographics, CNES/Airbus DS, USDA, USGS, AEX, Getmapping, Aerogrid, IGN, IGP, swisstopo, and the GIS User Community

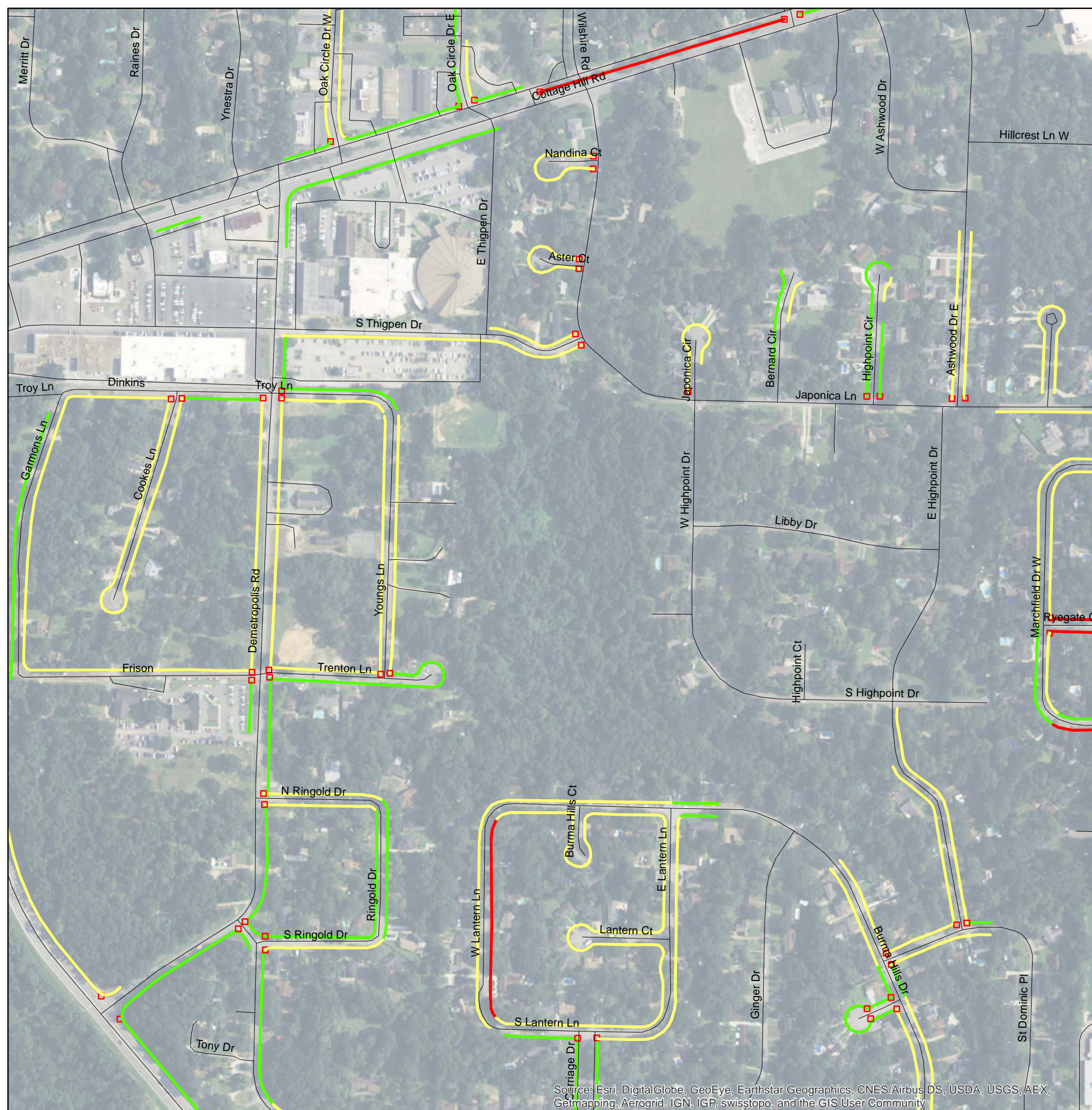


## ADA Transition Plan City of Mobile

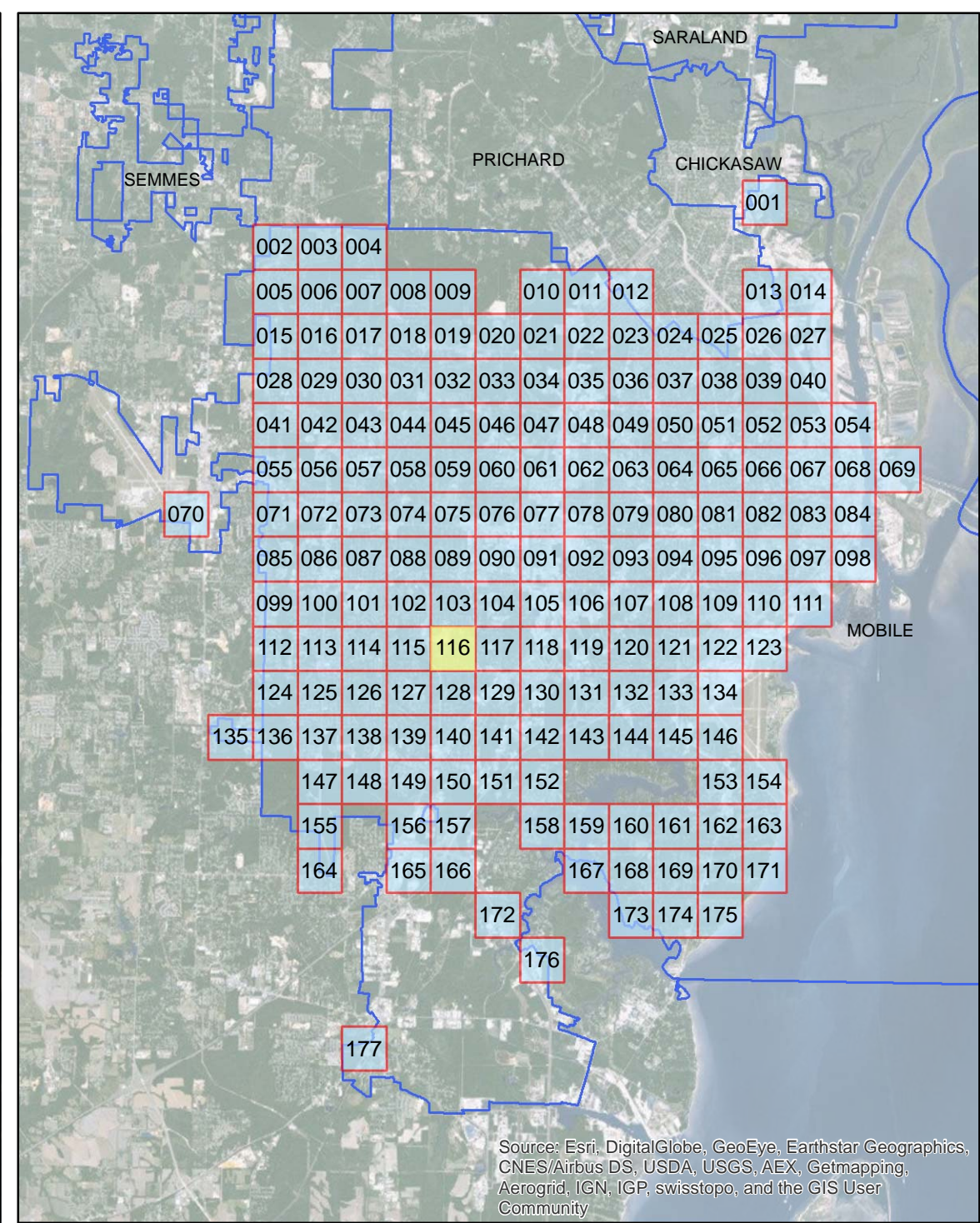
- Legend**
- Layer**
- Sidewalk Meets Standards
  - Handicap Ramp Replacement
  - >75% Needs Replacement
  - Approximately 25% Needs Repair



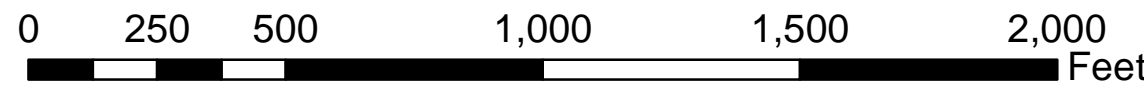




Source: Esri, DigitalGlobe, GeoEye, Earthstar Geographics, CNES/Airbus DS, USDA, USGS, AEX, Getmapping, Aerogrid, IGN, IGP, swisstopo, and the GIS User Community



Source: Esri, DigitalGlobe, GeoEye, Earthstar Geographics, CNES/Airbus DS, USDA, USGS, AEX, Getmapping, Aerogrid, IGN, IGP, swisstopo, and the GIS User Community



## ADA Transition Plan City of Mobile

- Legend**
- Layer**
- Sidewalk Meets Standards
  - Handicap Ramp Replacement
  - >75% Needs Replacement
  - Approximately 25% Needs Repair

